

BUS CONNECTS

TRANSFORMING CITY BUS SERVICES



Project Ireland 2040

Building Ireland's Future



Údarás Náisiúnta Iompair
National Transport Authority

*Second Community Forum
for*

*Blanchardstown to City Centre
Core Bus Corridor*

10th September 2019



Introductions



TRANSFORMING CITY BUS SERVICES

CHAIRPERSON – SIMON NUGENT

HUGH CREEGAN – Deputy CEO, NTA

JOHN FLEMING – BusConnects Infrastructure Director

AIDAN GALLAGHER – Senior Project Manager, BusConnects

DENIS CROWLEY – Arup Consulting Engineers

AGENDA

- Introduction
- Overview of BusConnects
- Recap of Actions
- Review of Submissions
- Indications of Designs under Consideration
- Q&A's

BUS CONNECTS

TRANSFORMING CITY BUS SERVICES



Core Bus Corridors
providing continuous bus
priority



Redesign of
Network of Bus
Services



State-of-the-art
Ticketing System



Simpler Fare
Structure



Cashless Payment
System



Park & Ride
facilities



New Bus Livery



New Bus Stops
+ Shelters



Use of Low
Emission Vehicles

Recap of Actions from First Community Forum

- To refine the layouts for cycling at junctions along scheme;
- To review bus stop and pedestrian crossing location at Church on Navan Road;
- To review cycle network design along Prussia Street;
- To review island design on Brunswick Street to limit access to Grangegorman Road Lower;
- To review traffic arrangement on Aughrim Street;
- To review rat-running enforcement along the route.

Review of Submissions



Public Consultation Submission Summary

- The emerging preferred route for the Blanchardstown to City Centre Core Bus Corridor was consulted over a four and a half month period (14th November 2018 to the 29th March 2019)
- A total of **538** submissions were received and logged for the scheme.
- Notes from these meetings, as well as from public consultation sessions were also logged.
- Submissions – Stoneybatter (**Pride of Place**) and **St Joseph's Road**

Submissions Received by Section

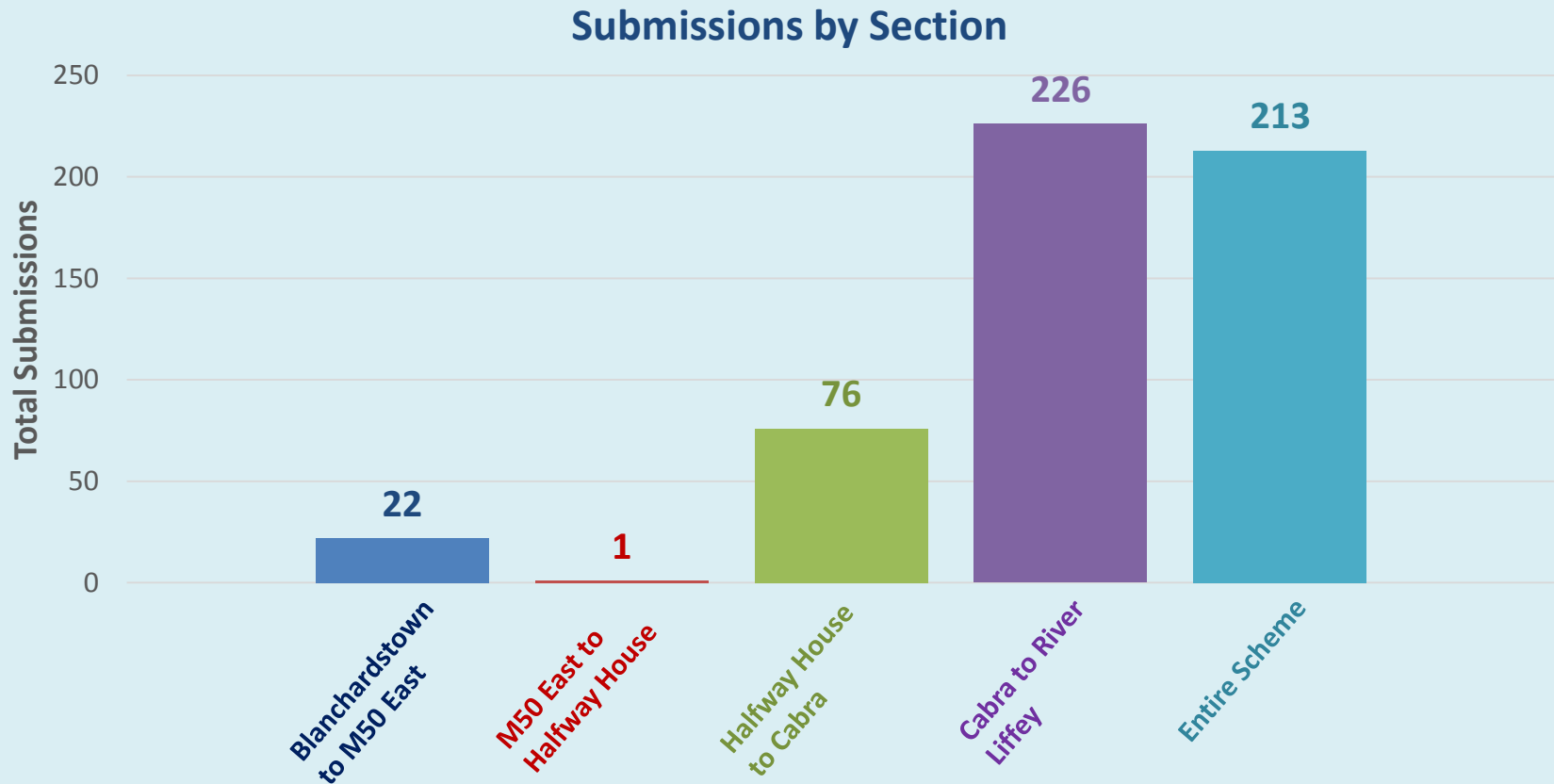
In the analysis of submissions, the Core Bus Corridor was divided into 4 sections, namely:

- **Section 1:**
Blanchardstown Shopping Centre to M50 Junction – N3 (Navan Road)
- **Section 2:** The M50 (East) to Halfway House
- **Section 3:** Halfway House to Cabra
- **Section 4:** Cabra to the River Liffey



Submissions Received by Section

- The issues raised in each submission were entered and categorised in the database by geographical section.



Submissions Summary

Main Issues

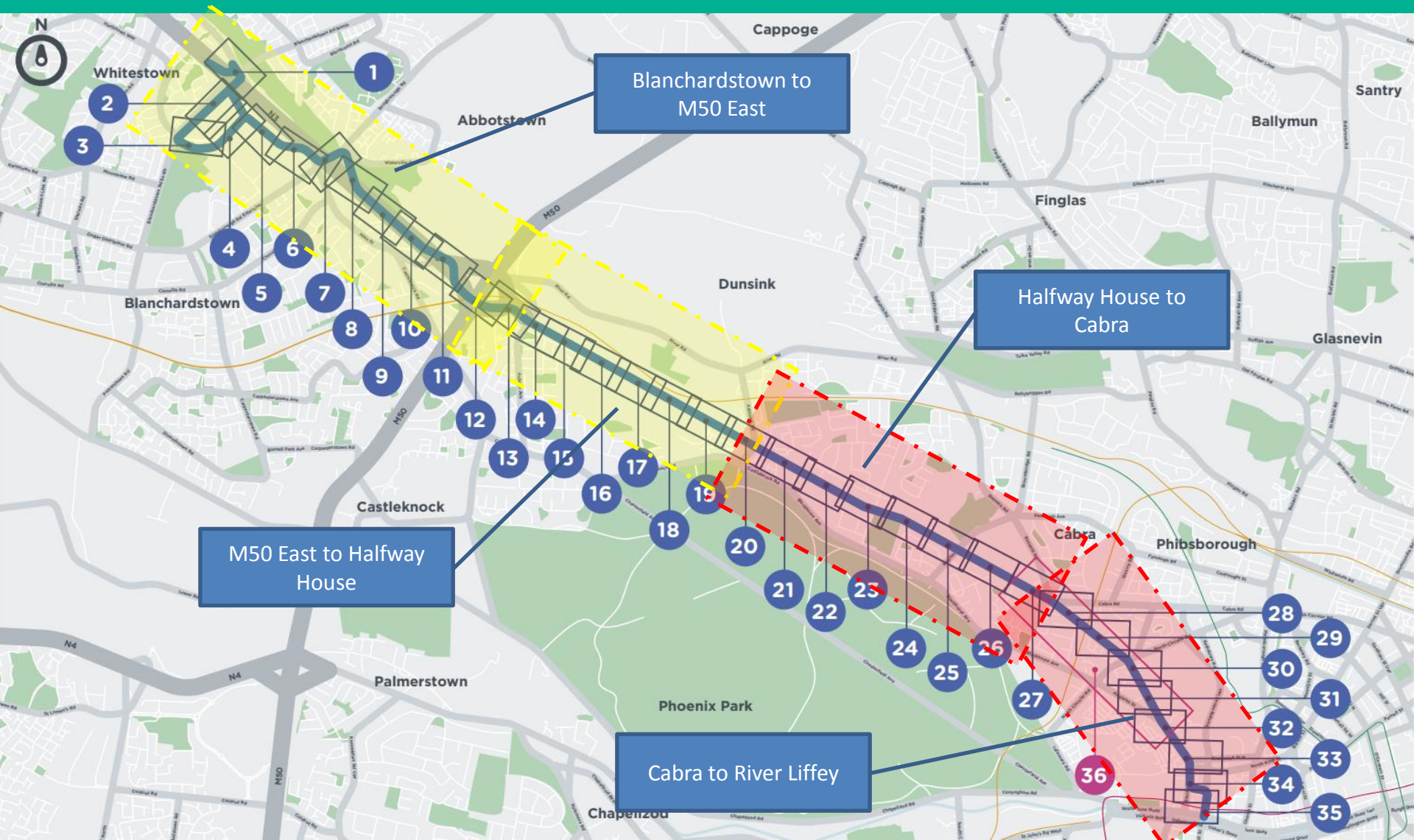
Main Issues Raised

Traffic and access impacts	Environmental Impacts
Cycling Facilities	Loss of Car Parking / Driveways access
Safety Concerns	Bus Services and Stops
Community Impacts	Trees
Bus Lanes & Road Widening	Loss of Property Value / CPO Issues

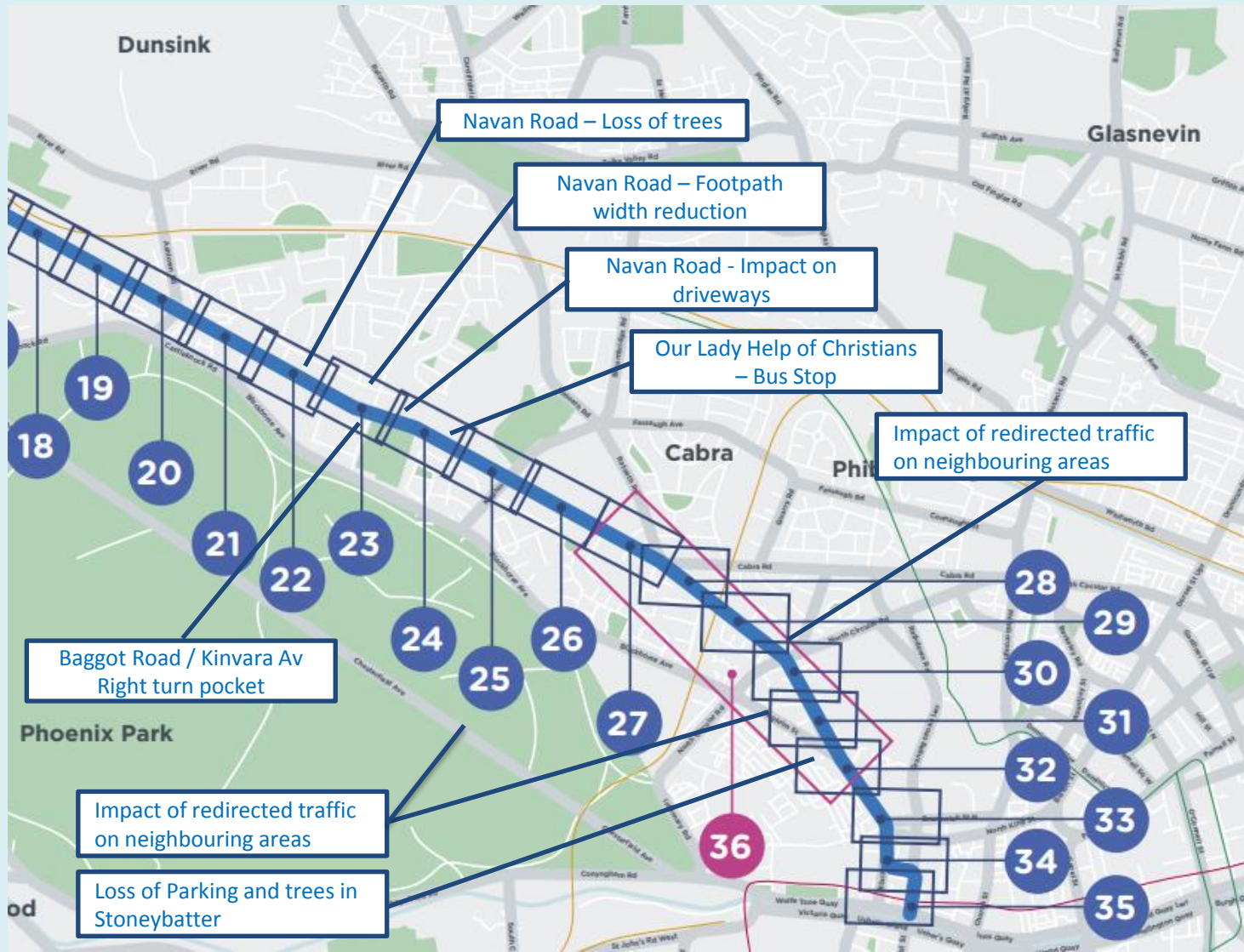
Review of Route Proposals



Areas of Particular Interest – Main Sections



Areas of Particular Interest – Key Issues



Urban Realm Concepts (Junction at Halfway House)



Junction at Halfway House Existing Junction

**BUS
CONNECTS**

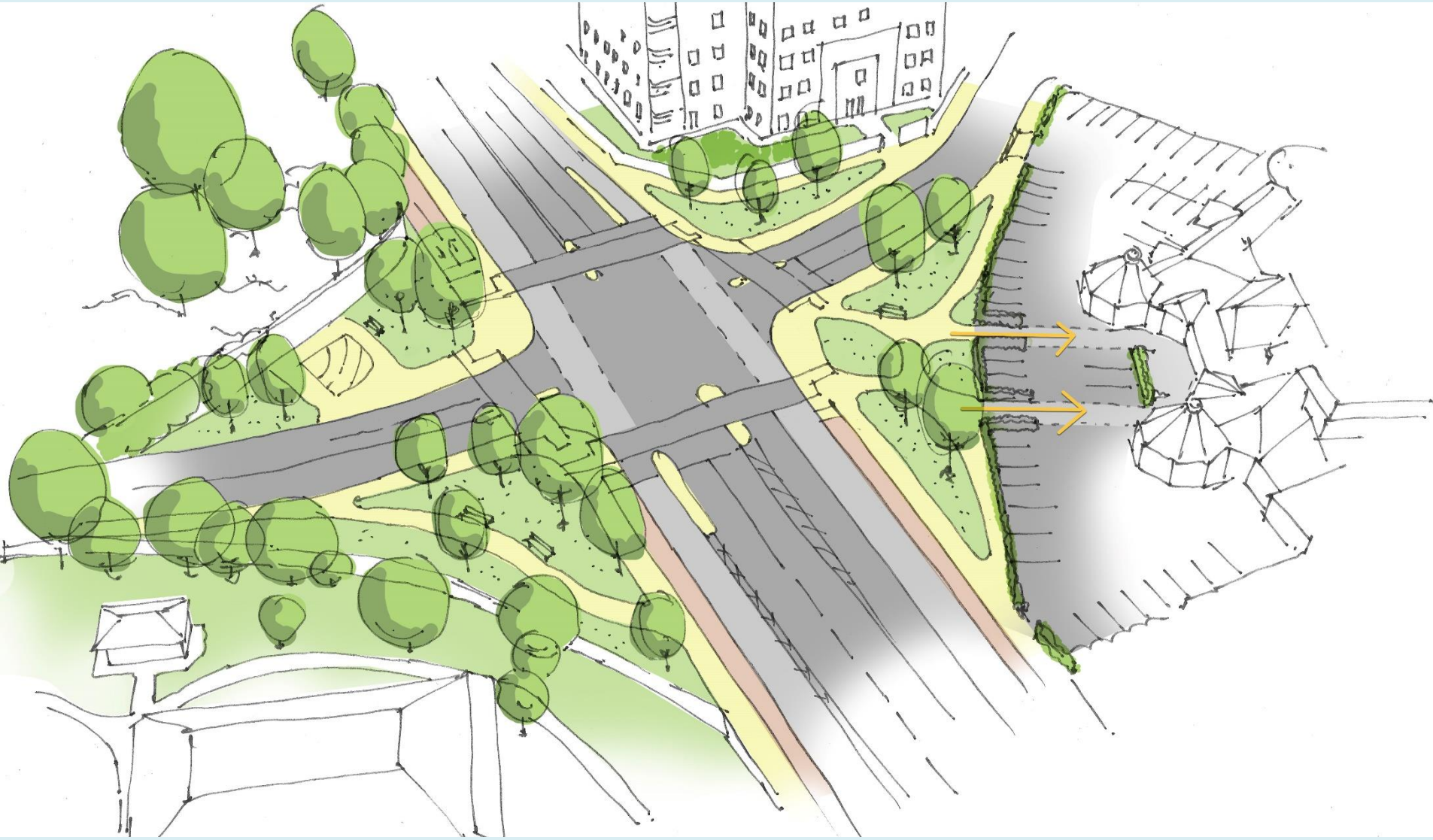
TRANSFORMING CITY BUS SERVICES



Junction at Halfway House Urban Realm Concept

**BUS
CONNECTS**

TRANSFORMING CITY BUS SERVICES



Urban Realm Concepts (Navan Road)



Navan Road Existing section

**BUS
CONNECTS**

TRANSFORMING CITY BUS SERVICES



Navan Road Urban Realm Concept

**BUS
CONNECTS**

TRANSFORMING CITY BUS SERVICES



Navan Road Existing section

**BUS
CONNECTS**

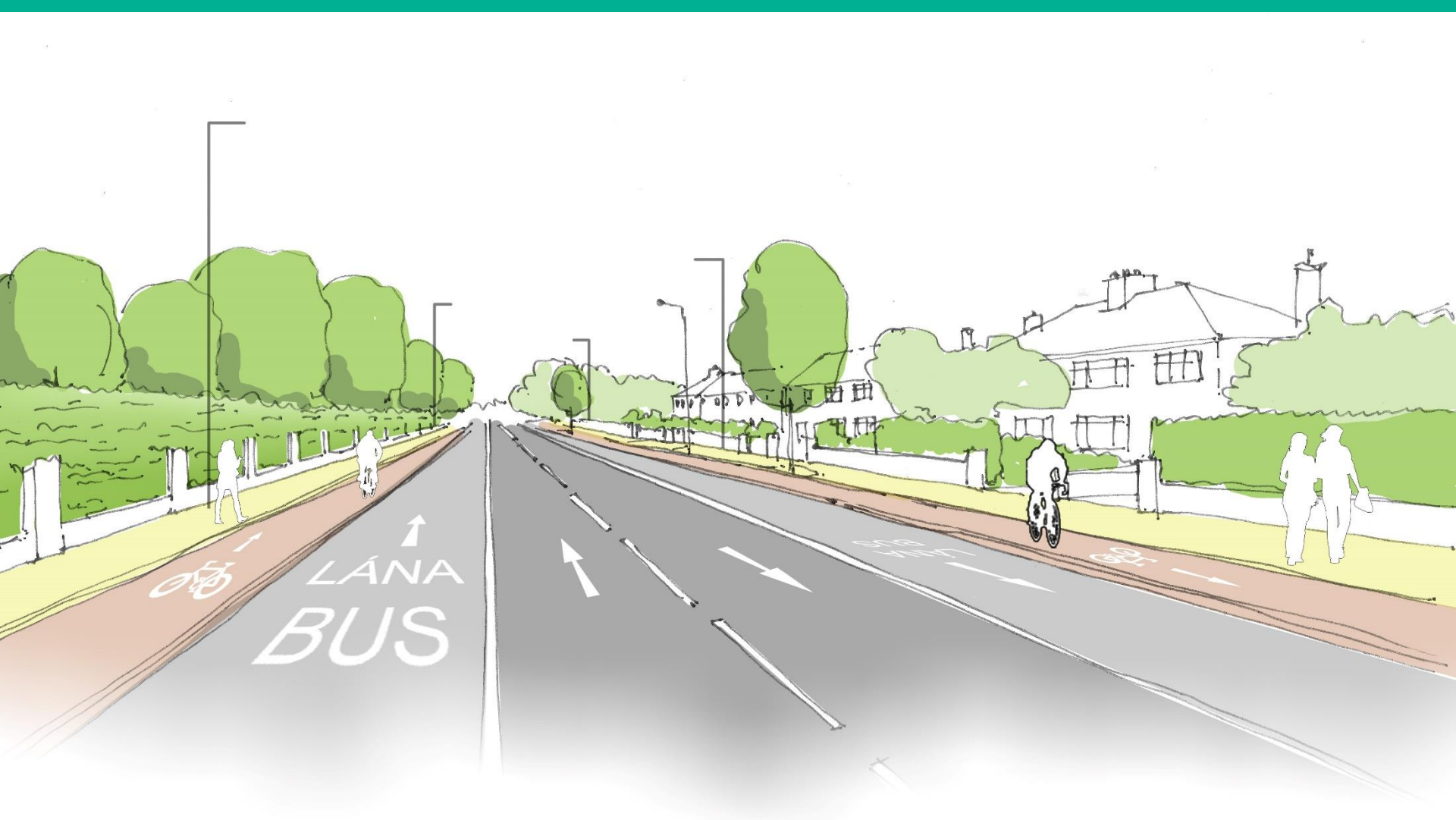
TRANSFORMING CITY BUS SERVICES



Navan Road Urban Realm Concept

**BUS
CONNECTS**

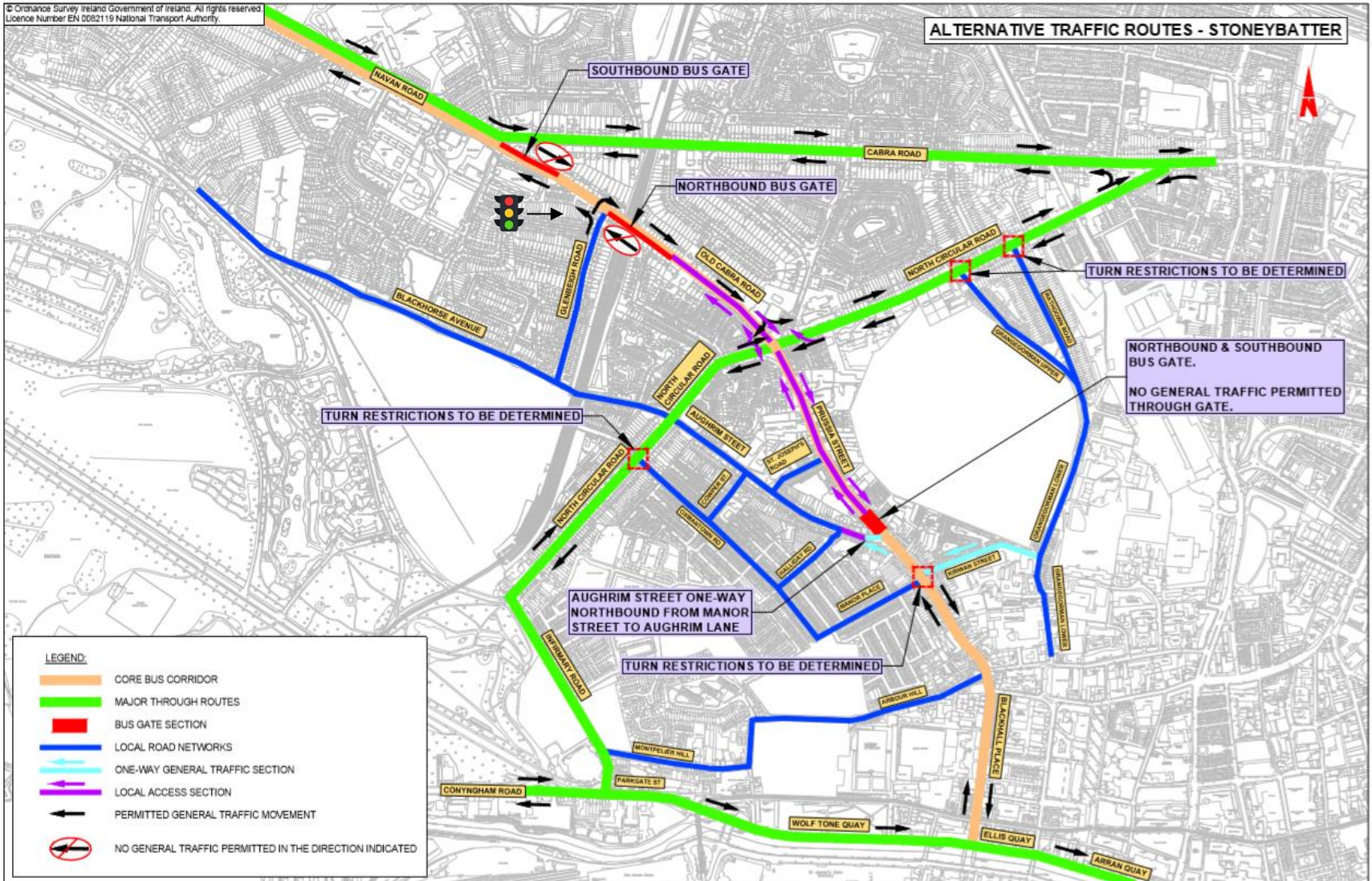
TRANSFORMING CITY BUS SERVICES



Traffic management - Stoneybatter



Old Cabra Rd / Prussia St / Aughrim St



Prussia Street Bus Gate

**BUS
CONNECTS**

TRANSFORMING CITY BUS SERVICES



Example in Cambridge



Example at College Green

Urban Realm Concepts (Stoneybatter)



Stoneybatter Urban Realm – General Plan

**BUS
CONNECTS**

TRANSFORMING CITY BUS SERVICES



Stoneybatter Urban Realm – Section 1

**BUS
CONNECTS**

TRANSFORMING CITY BUS SERVICES



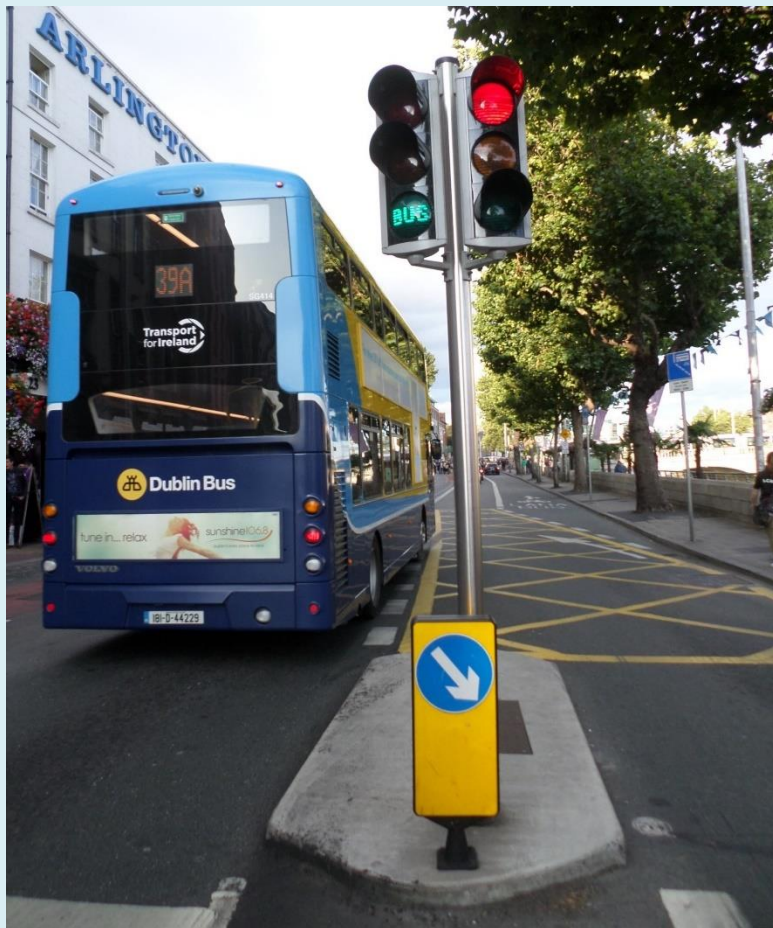
Stoneybatter Bus Priority Signal

**BUS
CONNECTS**

TRANSFORMING CITY BUS SERVICES

Bus Priority Signal Northbound at Manor Street

(example at Bachelor's Walk)



Stoneybatter Urban Realm – Section 2



Stoneybatter Existing

**BUS
CONNECTS**

TRANSFORMING CITY BUS SERVICES



Google Earth

Stoneybatter Urban Realm Concept

**BUS
CONNECTS**

TRANSFORMING CITY BUS SERVICES



General items under consideration



General items under consideration

Cycle Routes

Traffic Arrangements

Bus Priority Arrangements

Pedestrian Facilities

Urban Realm Improvements

Questions & Answers

