

BusConnects Infrastructure Dublin

Core Bus Corridors Preferred Route Options

Clongriffin to City Centre

Community Forum Meeting
Third Public Consultation Overview
Wednesday 18 November 2020



Project Ireland 2040
Building Ireland's Future



**BUS
CONNECTS**
SUSTAINABLE TRANSPORT FOR A BETTER CITY.

Agenda

- Introduction to Community Forum Panel
- Presentation on the Clongriffin to City Centre Core Bus Corridor
- Q & A

If you wish to ask a question to the NTA panel, please type your **Name** and your **Organisation** into the 'Chat' box.

When you are called upon sequentially by the Independent Chairperson to ask your question, the Webinar host will UNMUTE your microphone and you will receive a 'prompt' or 'notification' to your screen to unmute. You can then proceed to ask your question.

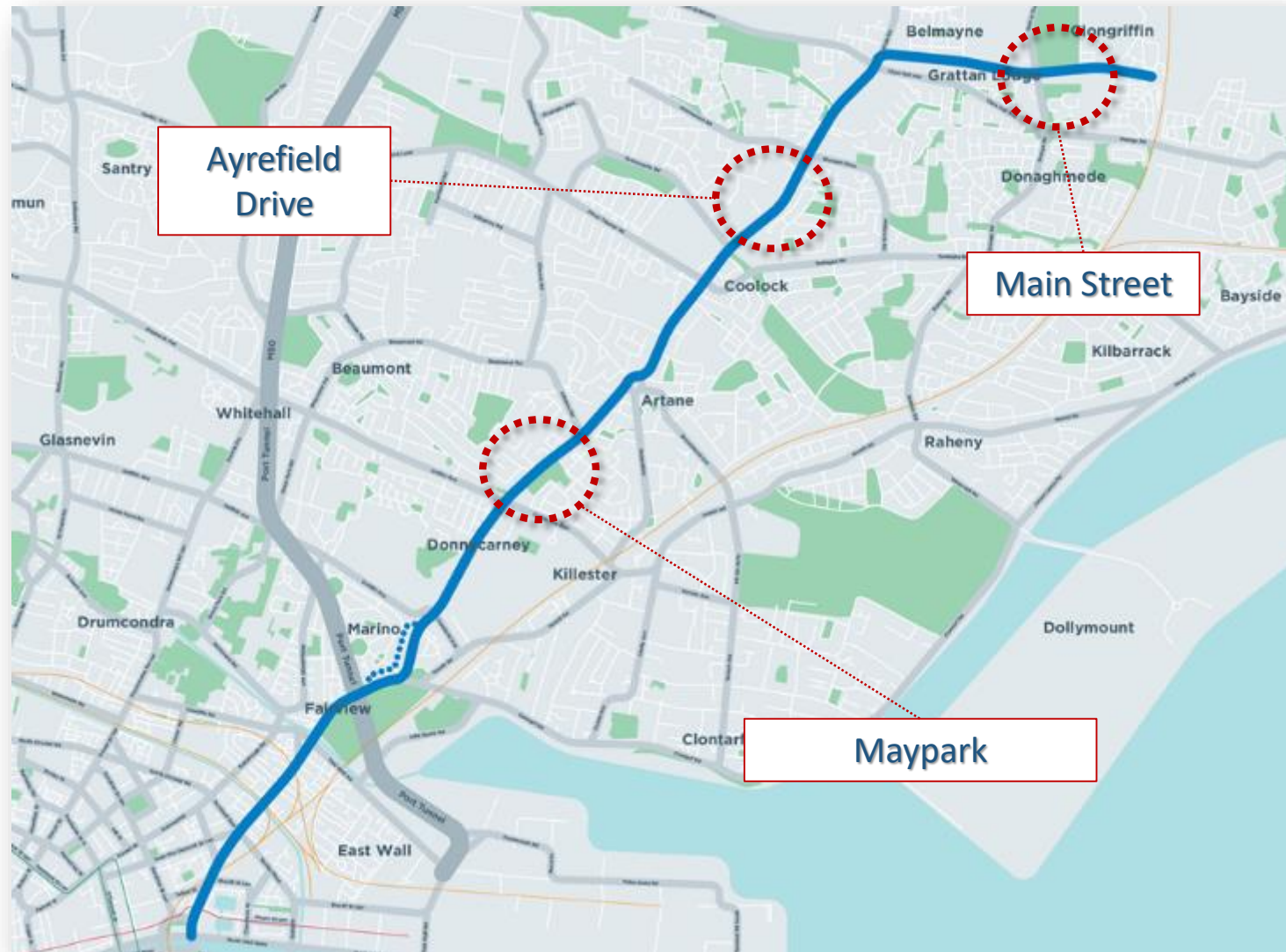
Please keep your question concise so that we can take questions from all the community groups/organisations on the webinar.

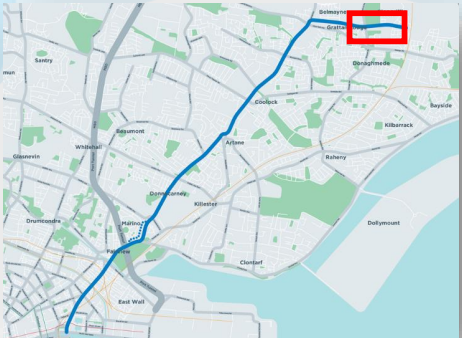
Community Forum Panel

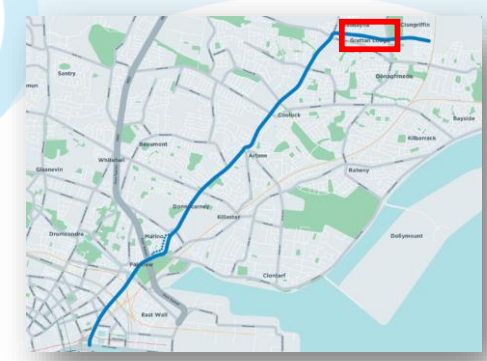
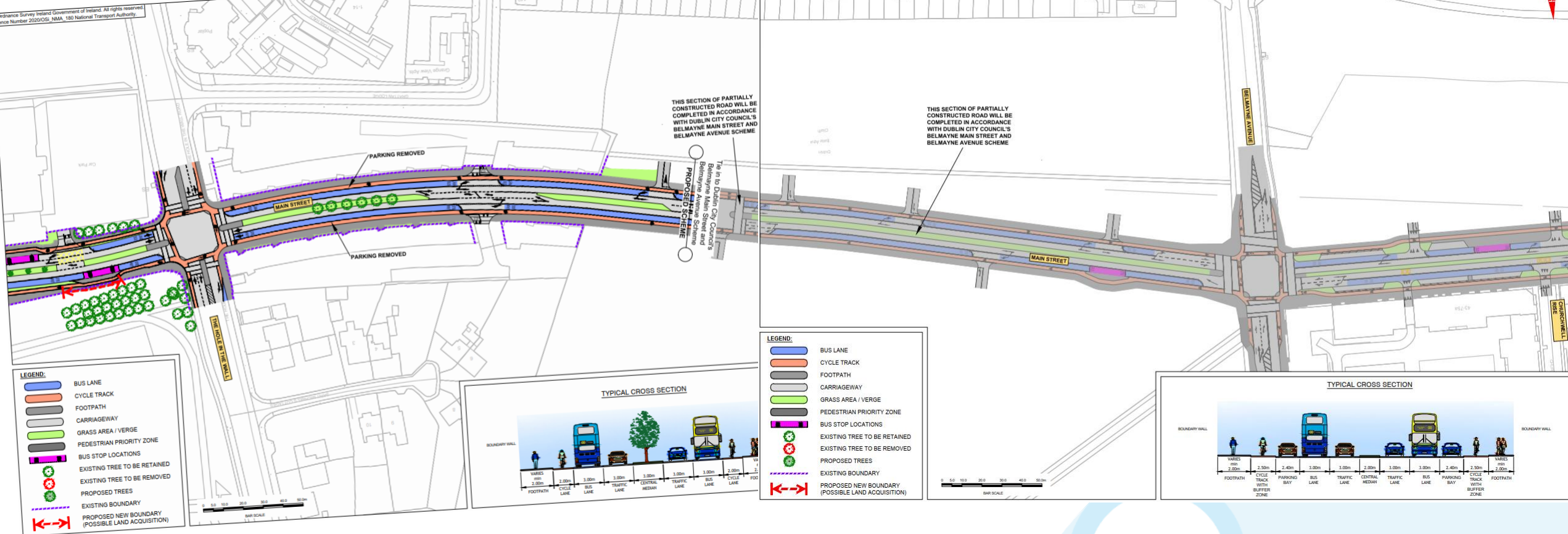
Independent Chair: Charlie Lowe

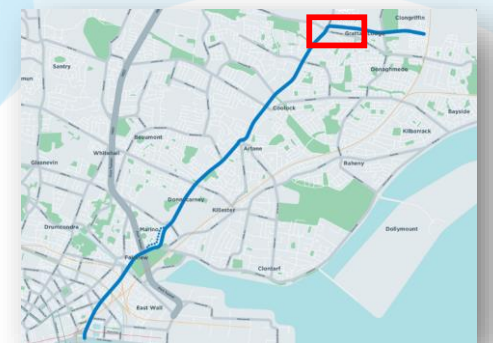
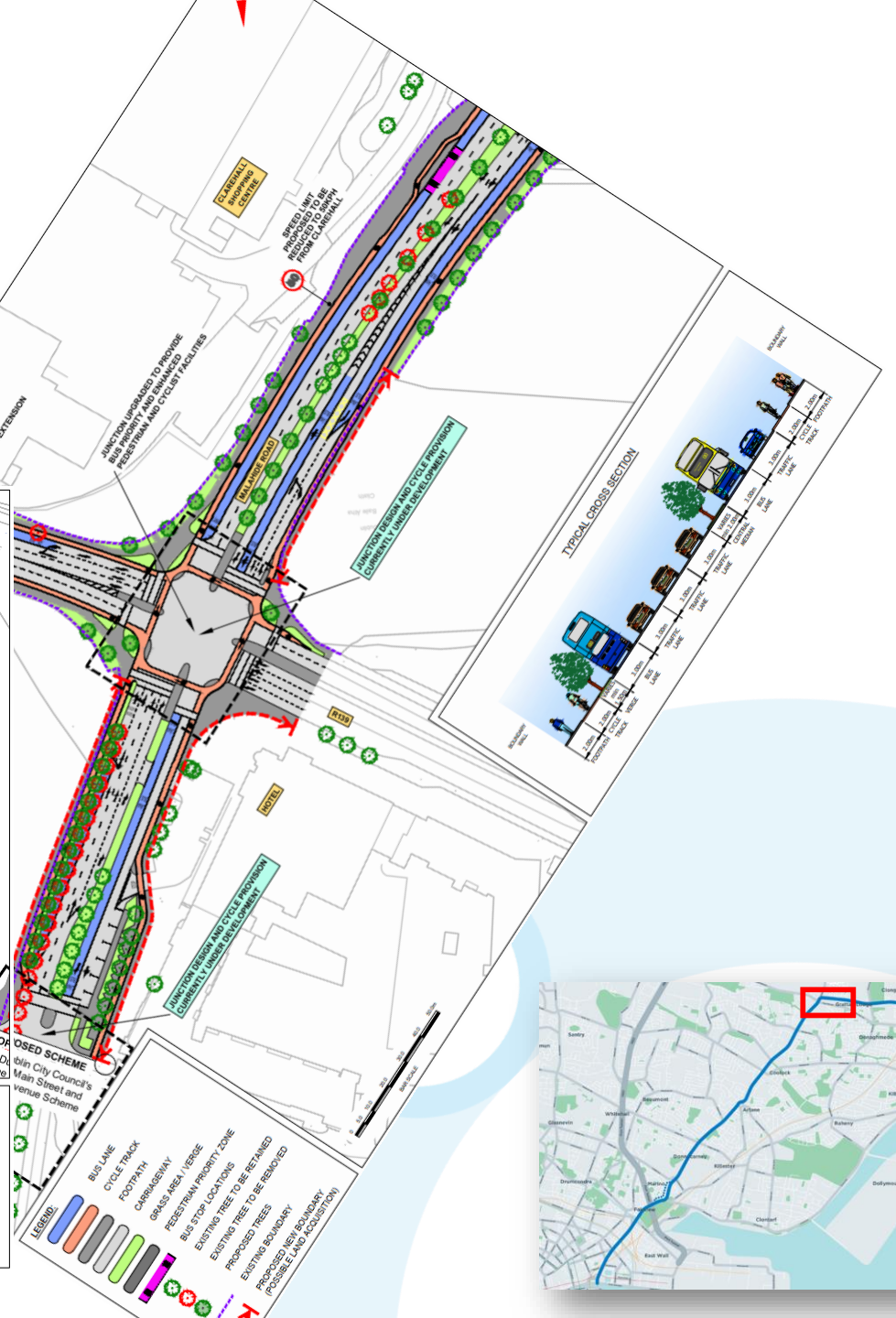
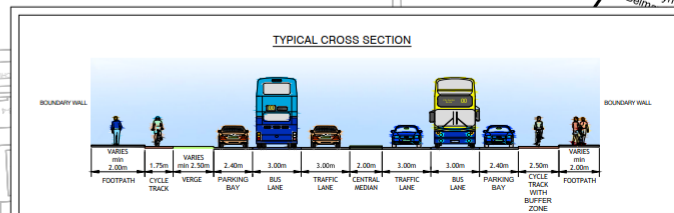
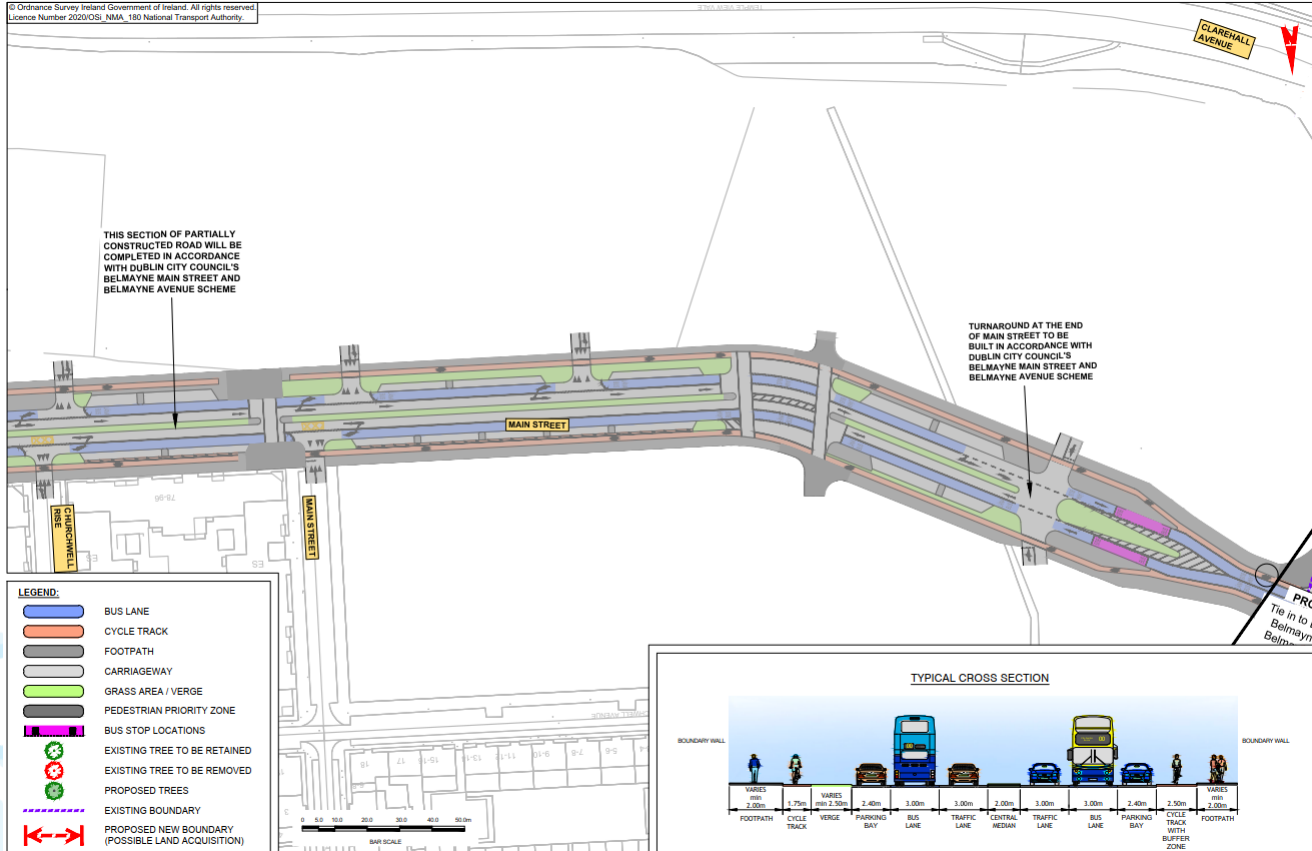
- Hugh Creegan – Deputy CEO (NTA)
- John Fleming – Project Director (NTA)
- Aidan Gallagher – Senior Project Manager (NTA)
- Joe Seymour – Design Coordinator (AECOM)
- John Hawe – Route Project Manager (Mott MacDonald)

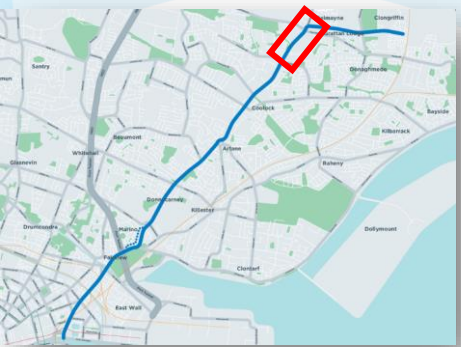
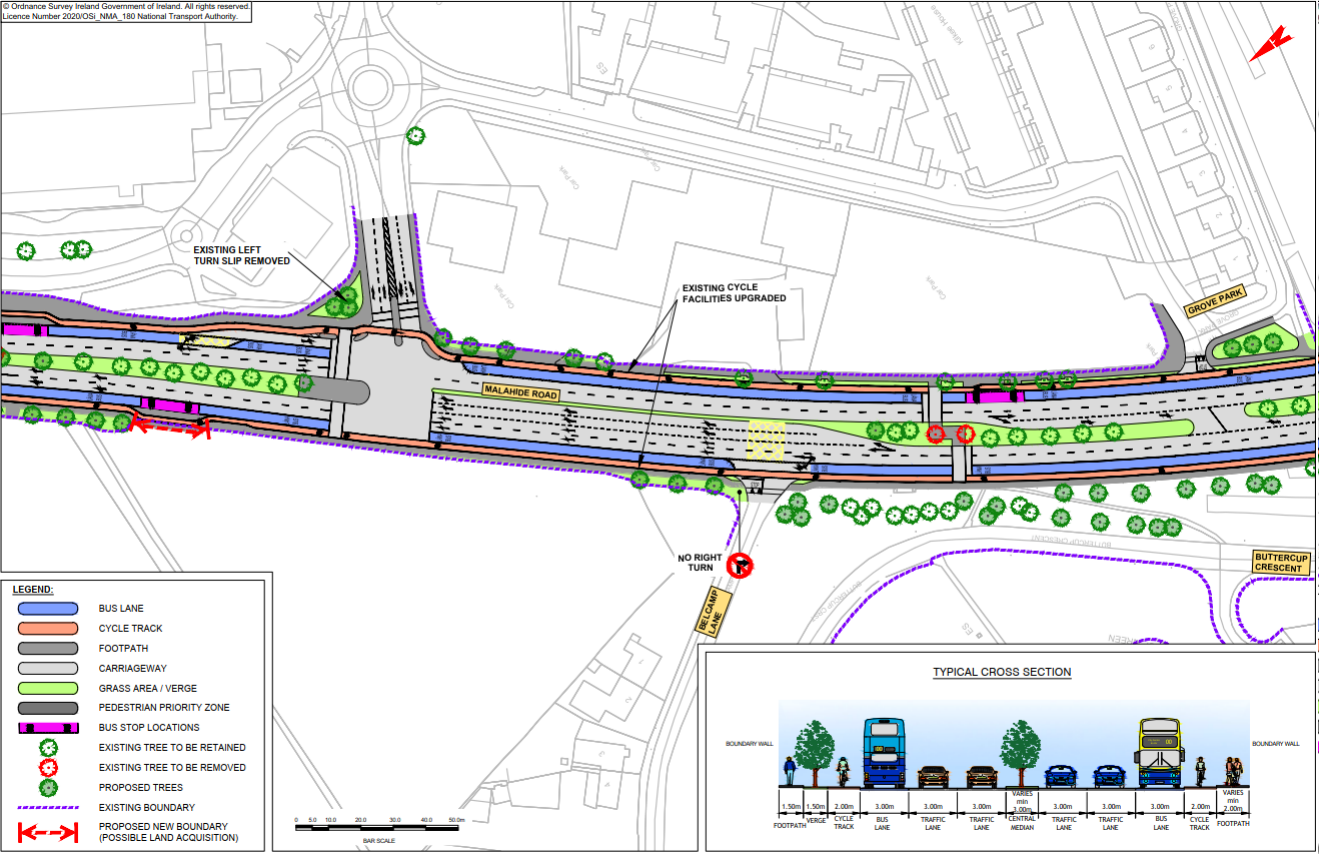
Clongriffin to City Centre Public Consultation 3 - Changes

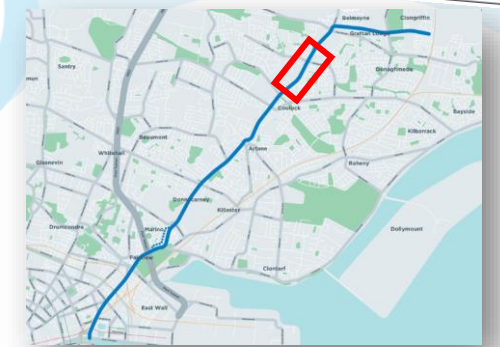
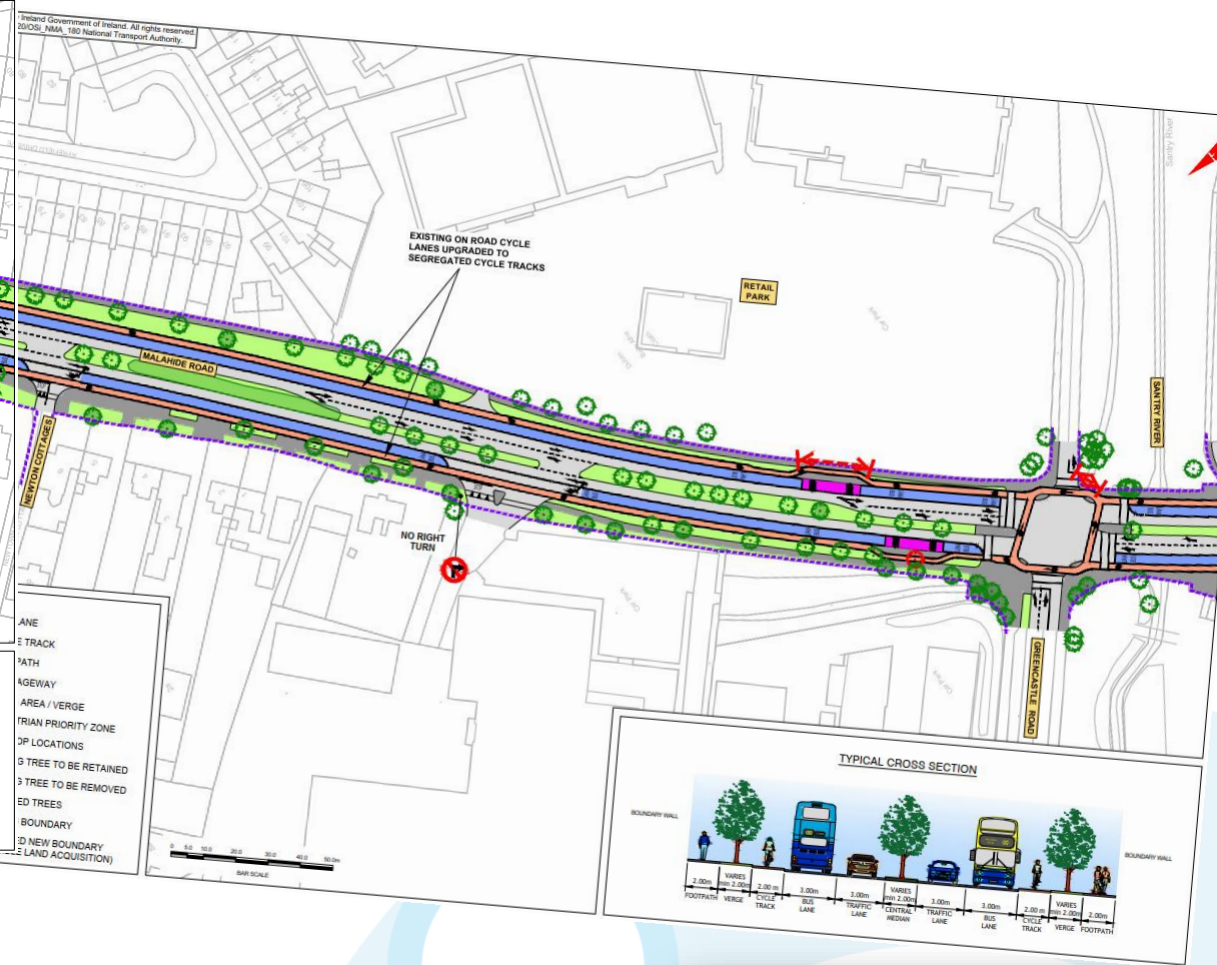
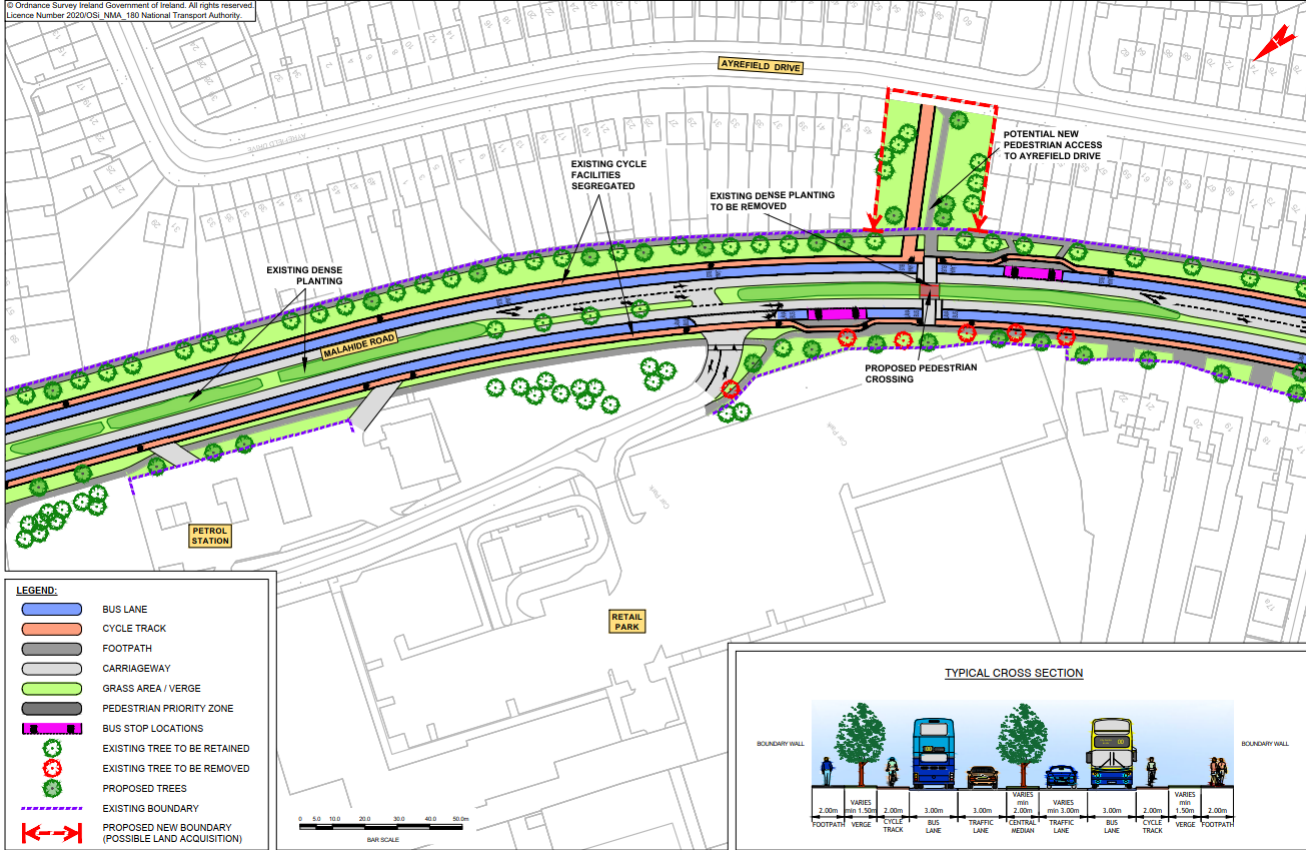




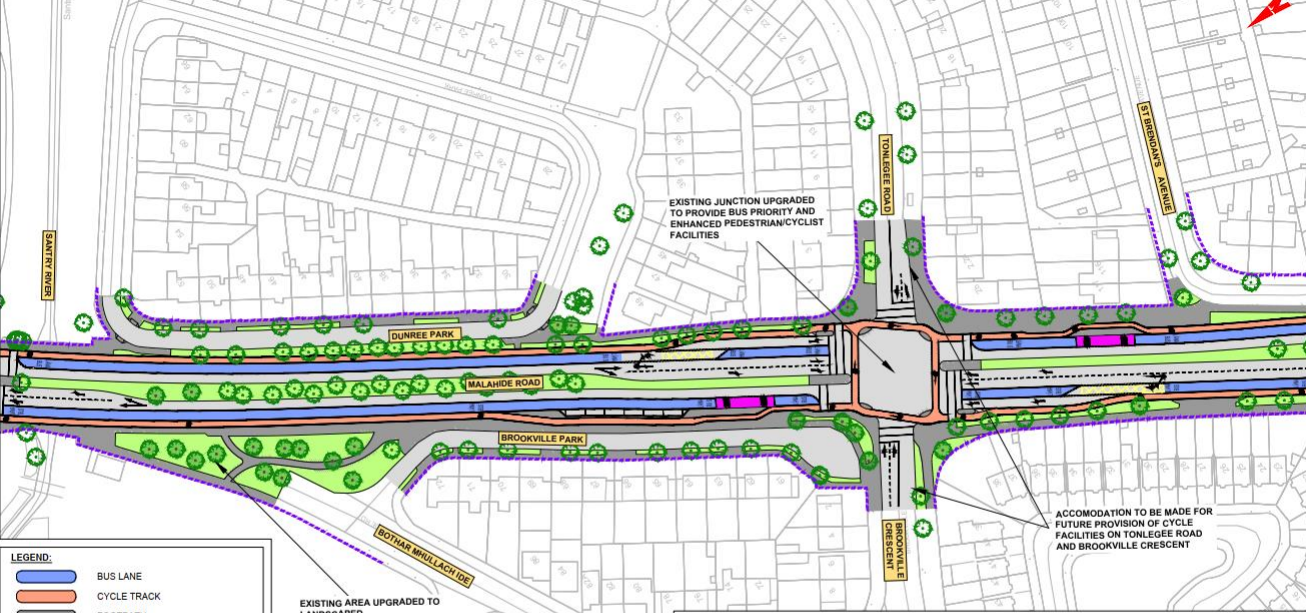




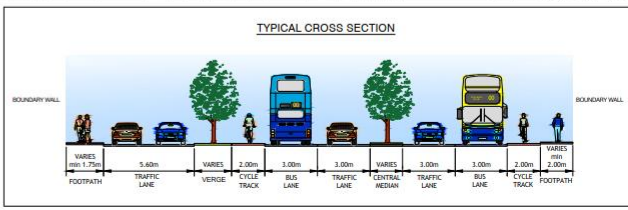




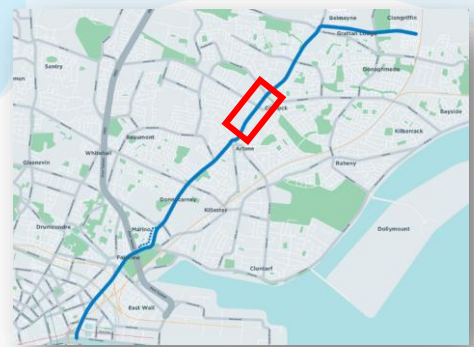
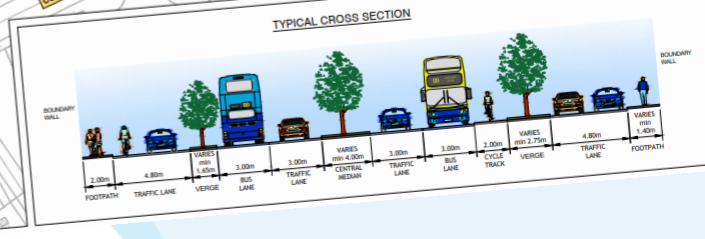


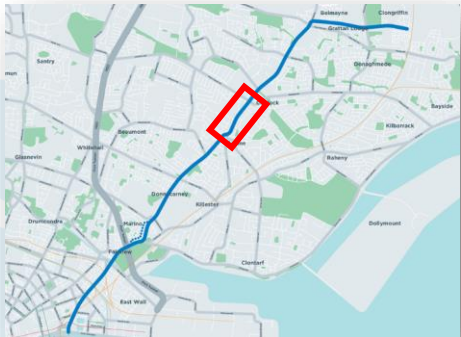


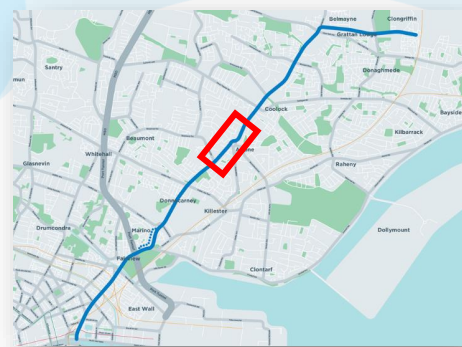
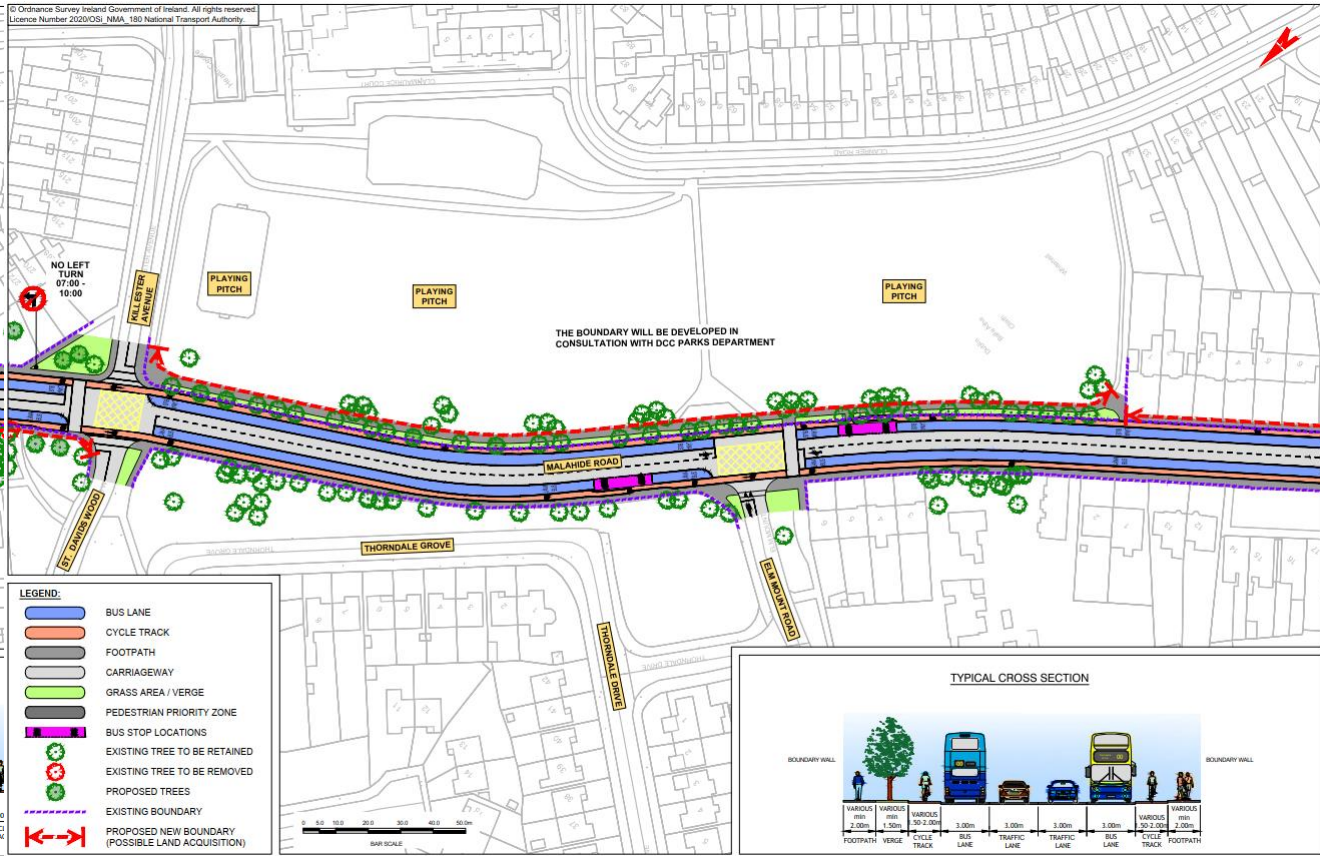
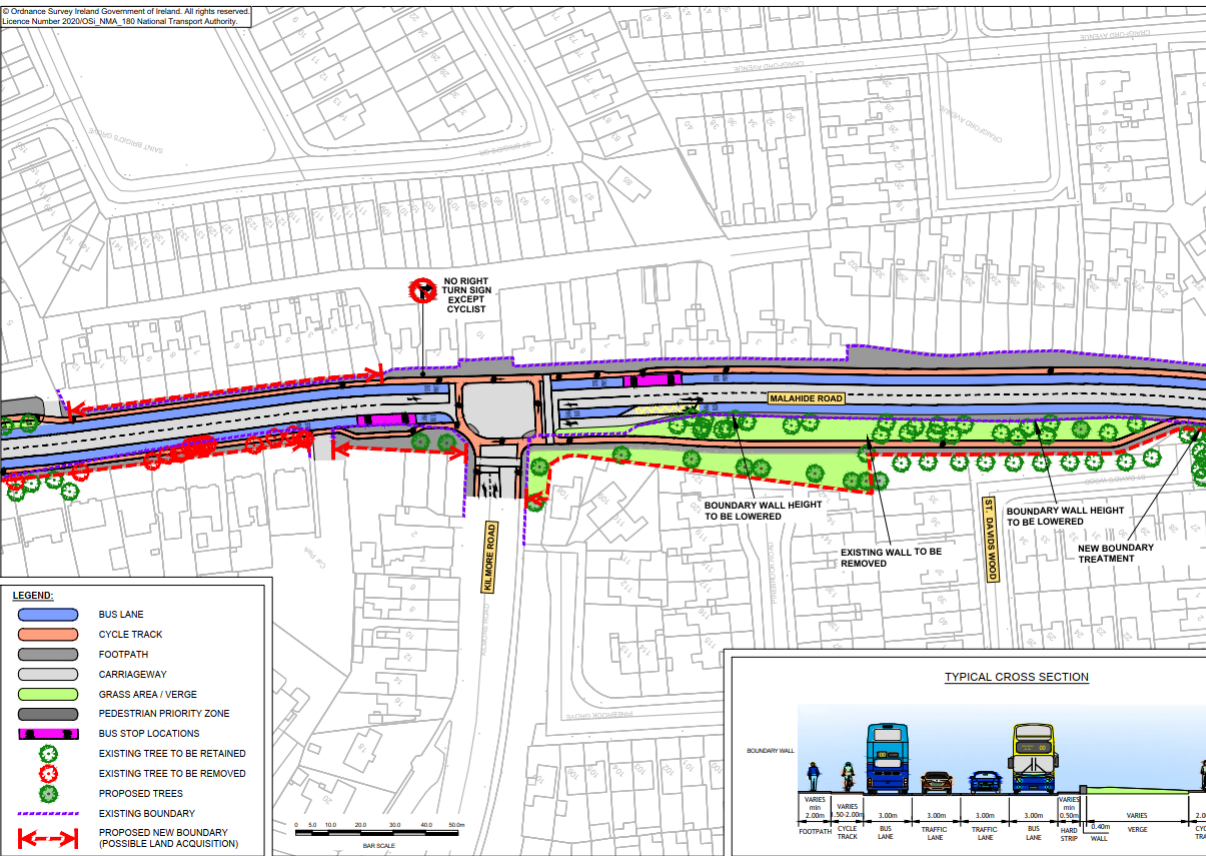
- LEGEND:**
- BUS LANE
 - CYCLE TRACK
 - FOOTPATH
 - CARRIAGEWAY
 - GRASS AREA / VERGE
 - PEDESTRIAN PRIORITY ZONE
 - BUS STOP LOCATIONS
 - EXISTING TREE TO BE RETAINED
 - EXISTING TREE TO BE REMOVED
 - PROPOSED TREES
 - EXISTING BOUNDARY
 - PROPOSED NEW BOUNDARY (POSSIBLE LAND ACQUISITION)



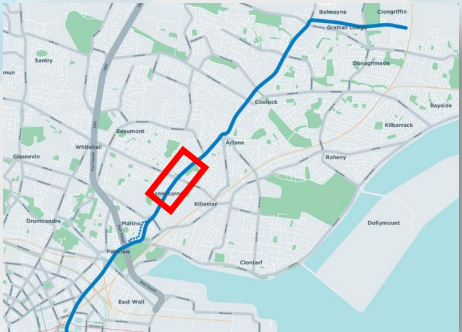
- US LANE
- CYCLE TRACK
- FOOTPATH
- CARRIAGEWAY
- GRASS AREA / VERGE
- PEDESTRIAN PRIORITY ZONE
- BUS STOP LOCATIONS
- EXISTING TREE TO BE RETAINED
- EXISTING TREE TO BE REMOVED
- PROPOSED TREES
- EXISTING BOUNDARY
- PROPOSED NEW BOUNDARY (POSSIBLE LAND ACQUISITION)





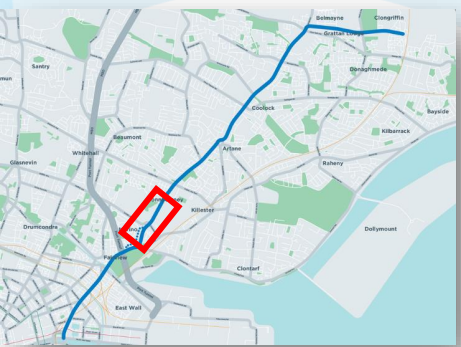
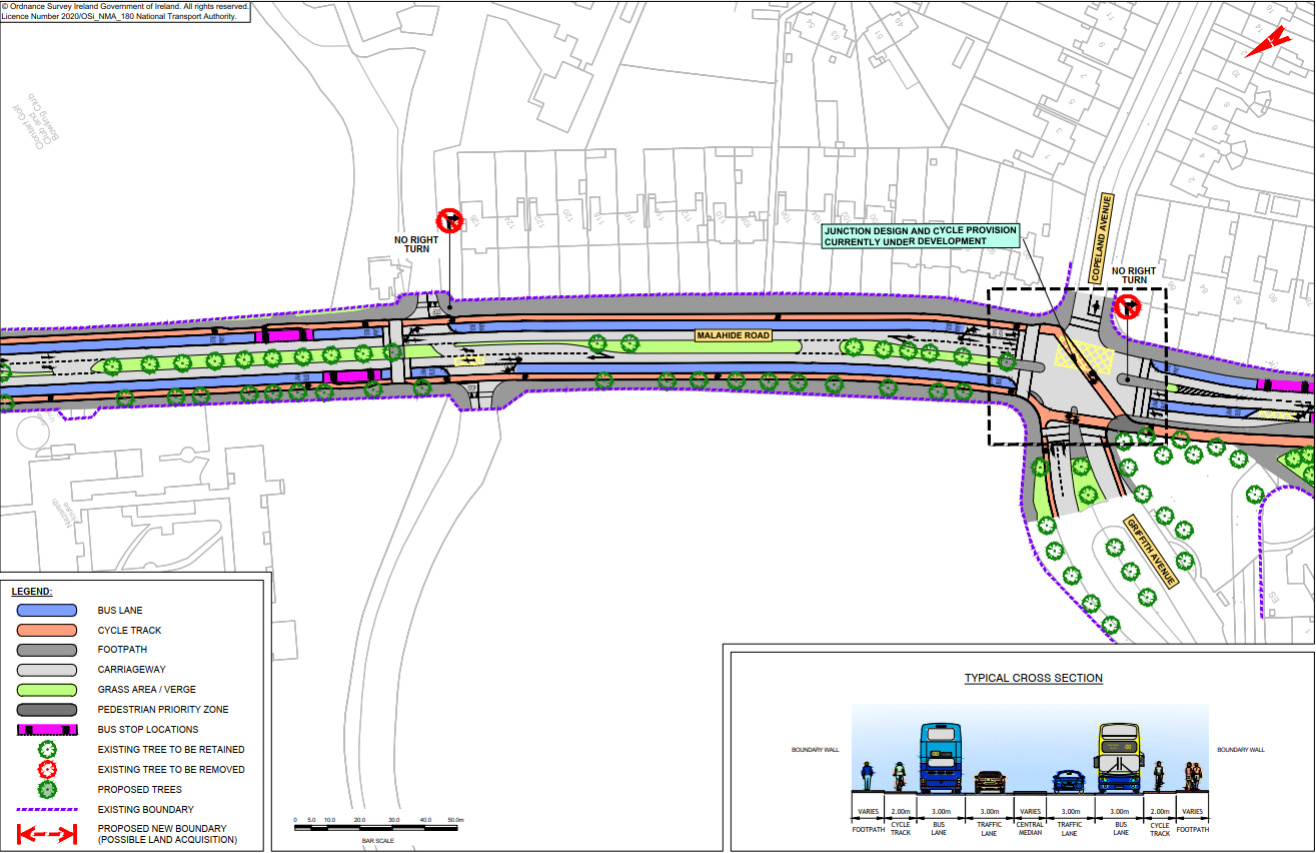


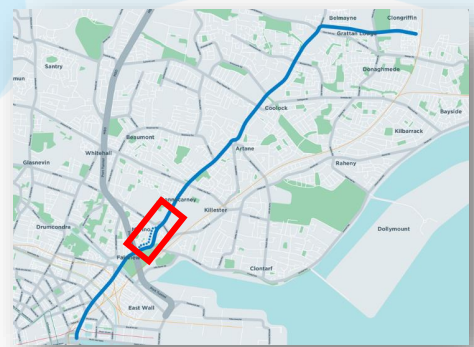
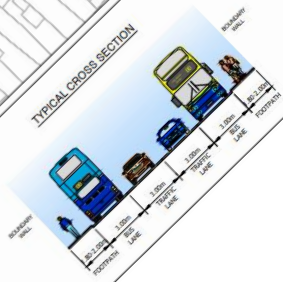
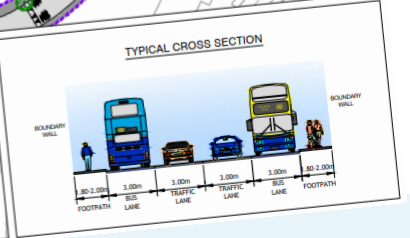












How to Engage?

How to Engage?

- Consultation on the proposals runs until **16 December**.
- Virtual consultation rooms for each Core Bus Corridor can be found on www.busconnects.ie.
- Submissions and observations may be made by:
 - **Email** - cbc@busconnects.ie
 - **Post** - Core Bus Corridor Project, National Transport Authority, Dún Scéine, Harcourt Lane, Dublin 2, D02 WT20.

Questions and Answers

If you wish to ask a question to the NTA panel, please type your Name and your Organisation into the 'Chat' box.

When you are called upon sequentially by the Independent Chairperson to ask your question, the Webinar host will UNMUTE your microphone and you will receive a 'prompt' or 'notification' to your screen to unmute. You can then proceed to ask your question.

Please keep your question concise so that we can take questions from all the community groups/organisations on the webinar.

How to Engage?

- Consultation on the proposals runs until **16 December**.
- Virtual consultation rooms for each Core Bus Corridor can be found on www.busconnects.ie.
- Submissions and observations may be made by:
 - **Email** - cbc@busconnects.ie
 - **Post** - Core Bus Corridor Project, National Transport Authority, Dún Scéine, Harcourt Lane, Dublin 2, D02 WT20.