

# BusConnects Infrastructure Dublin

## Core Bus Corridors Preferred Route Options

Community Forum Meeting  
Third Public Consultation Overview  
Wednesday 11 November 2020



Project Ireland 2040  
*Building Ireland's Future*



# Agenda

- Introduction to Community Forum Panel
- Presentation on the Lucan to City Centre Core Bus Corridor
- Q & A

If you wish to ask a question to the NTA panel, please type your **Name** and your **Organisation** into the 'Chat' box.

When you are called upon sequentially by the Independent Chairperson to ask your question, the Webinar host will UNMUTE your microphone and you will receive a 'prompt' or 'notification' to your screen to unmute. You can then proceed to ask your question.

Please keep your question concise so that we can take questions from all the community groups/organisations on the webinar.

# Community Forum Panel

Independent Chair: David Denny

- Hugh Creegan – Deputy CEO (NTA)
- John Fleming – Project Director (NTA)
- Joe Seymour – Design Coordinator (AECOM)
- Colin Acton – Route Project Manager (AECOM)

# BusConnects Dublin is a programme of 9 elements

■ **BUS** ➡ **230km** of bus priority making journeys faster and more reliable

■ **CYCLE** ➡ **200km** of cycle routes



Transitioning to a new  
**low emissions bus fleet**



State of the art  
**ticketing system**

**Cashless payment system**



**Simpler fare structure**



**New Park & Ride**  
sites in key locations



**New bus livery**

providing a common style across all operators



**New bus stops and shelters**

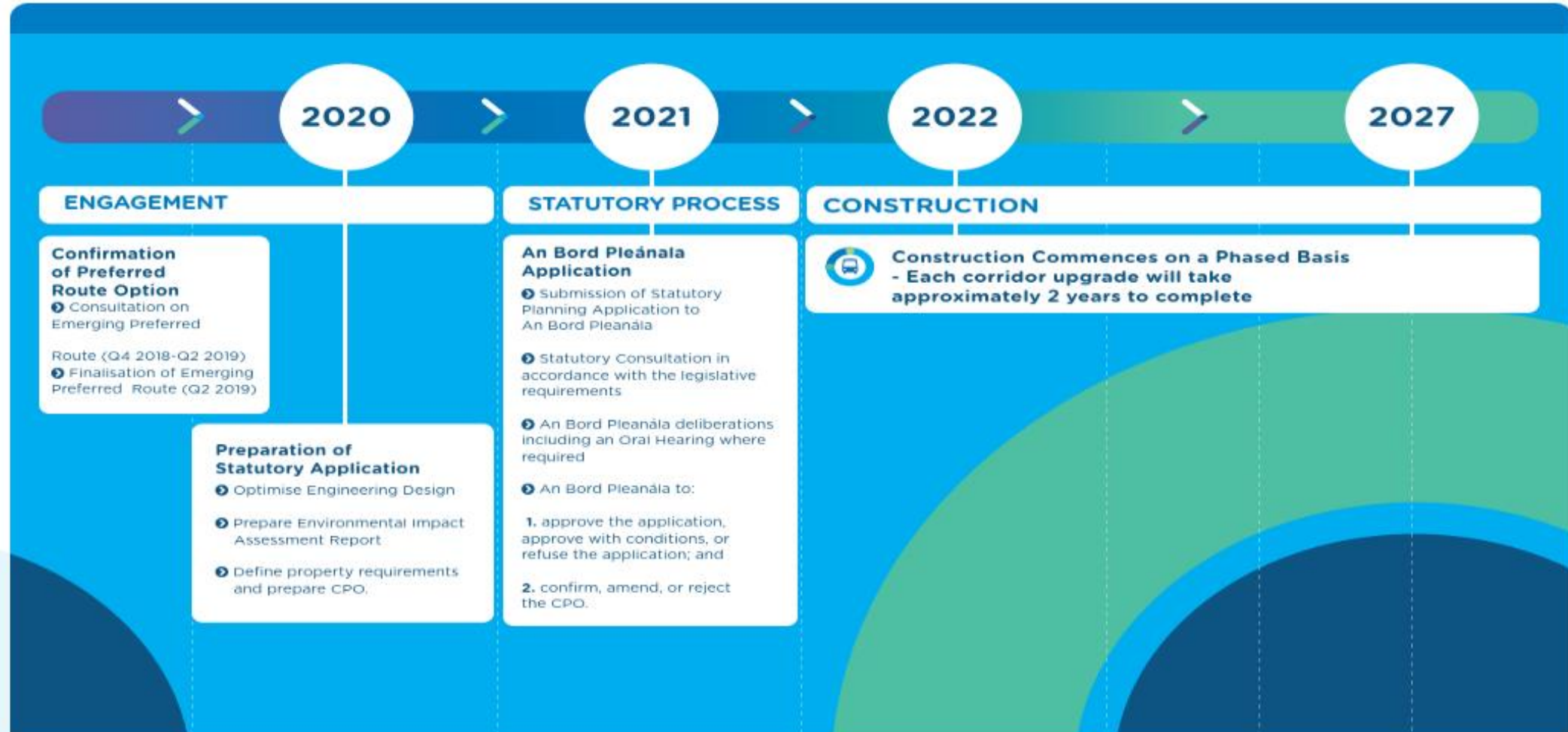
with better signage and information



**Dublin area bus network redesign**

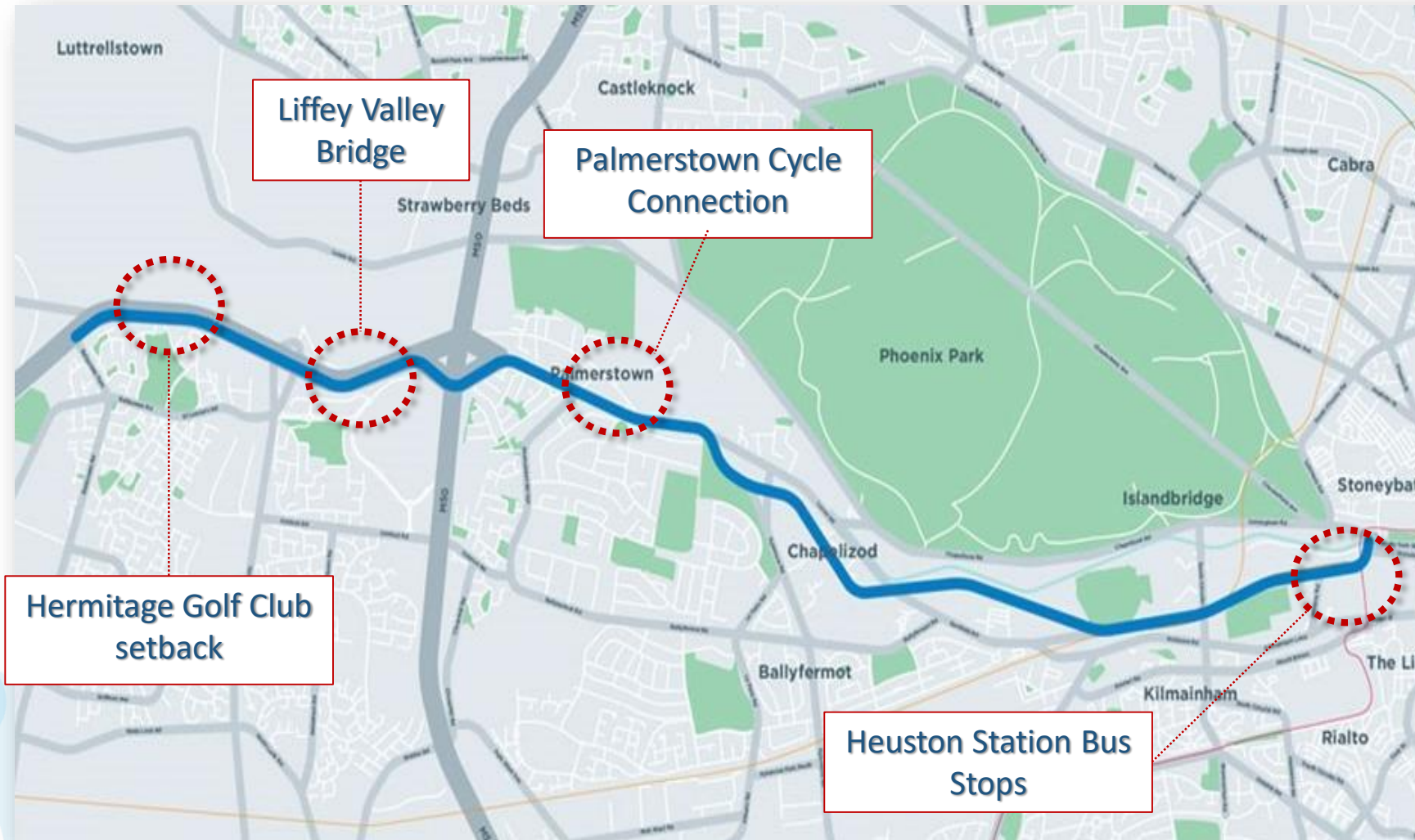
creating a more efficient network with high frequency spines, new orbital routes and increased bus services

# Timeline for the Core Bus Corridor Process





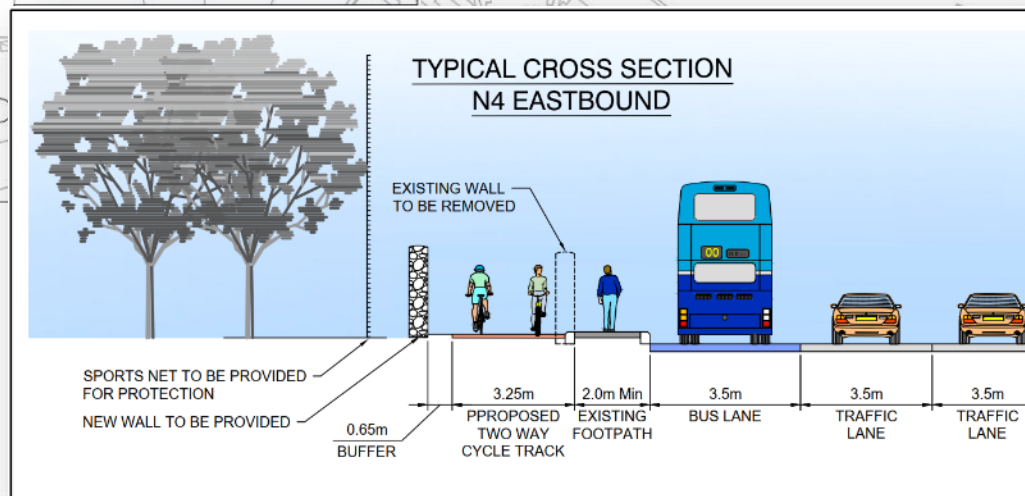
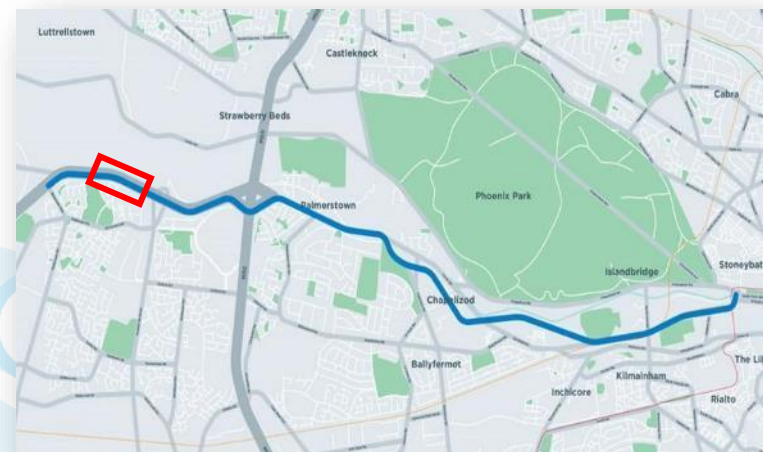
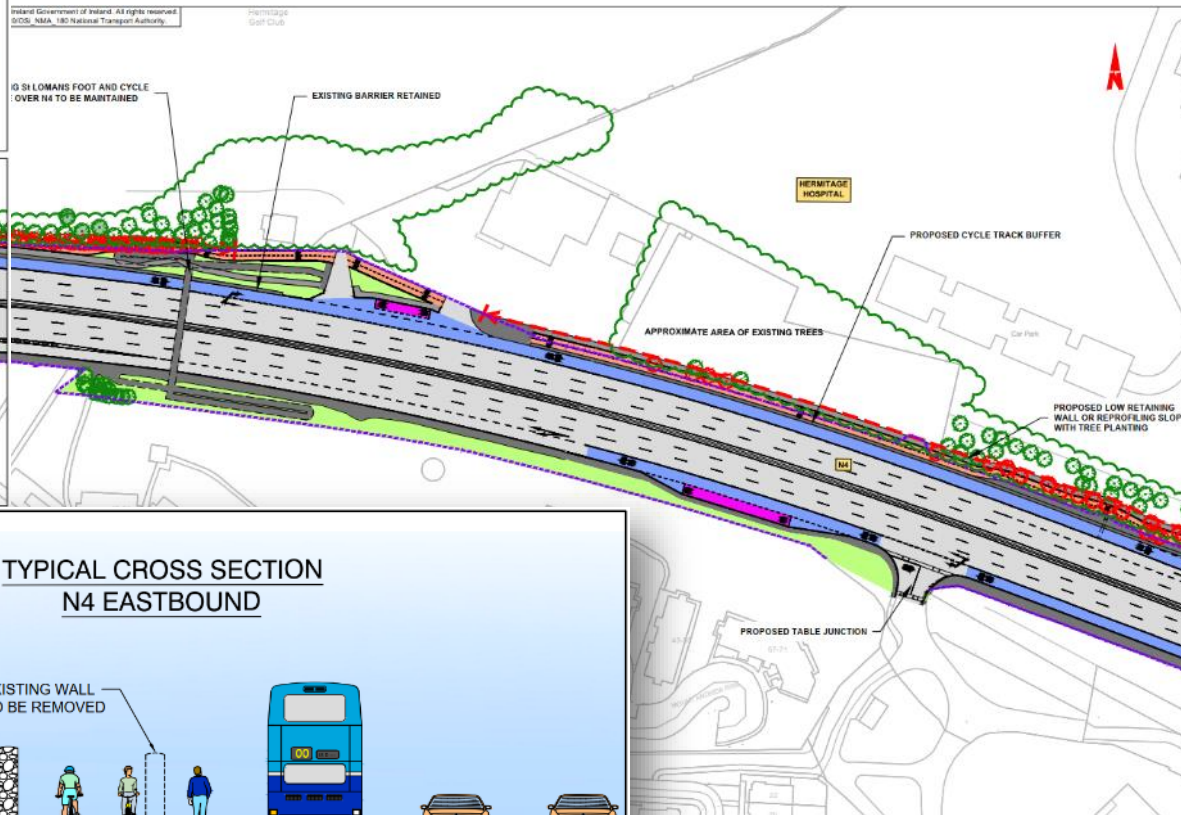
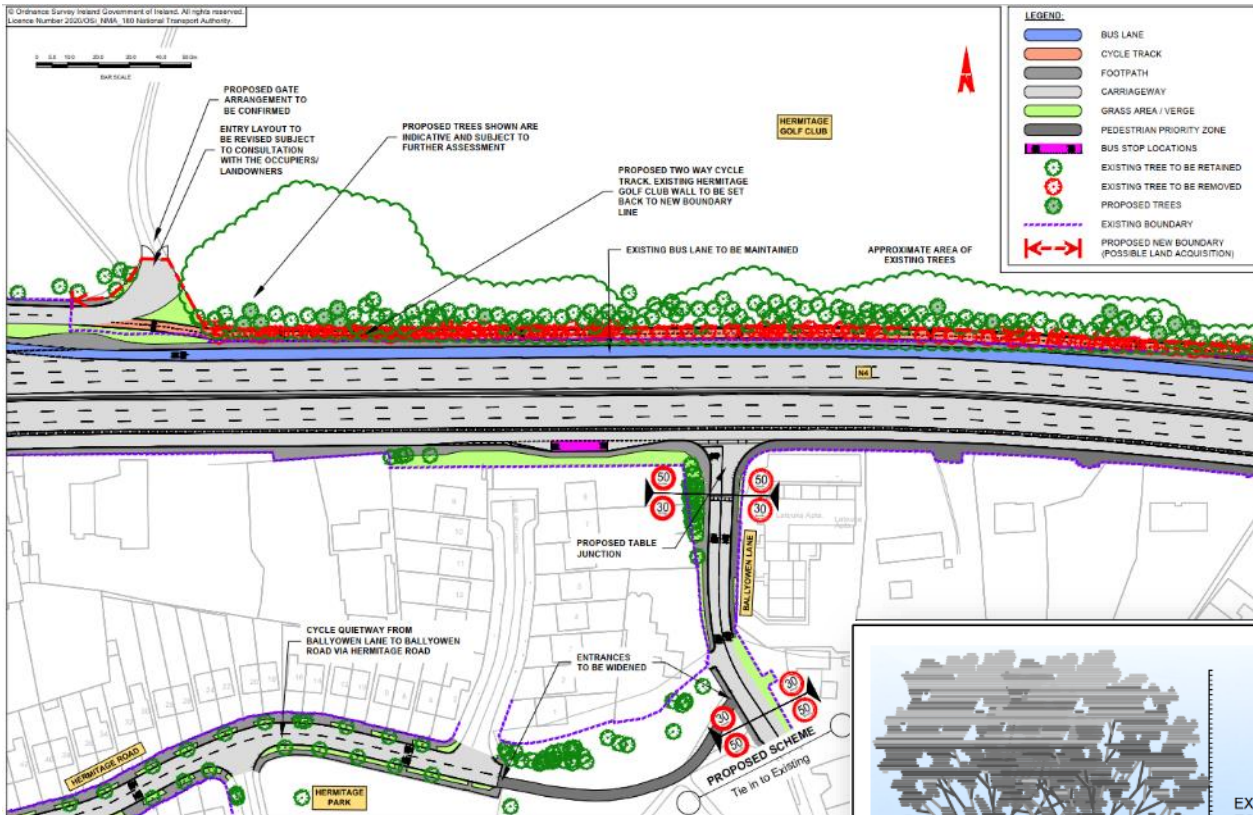
# Lucan to City Centre Public Consultation 3 - Changes











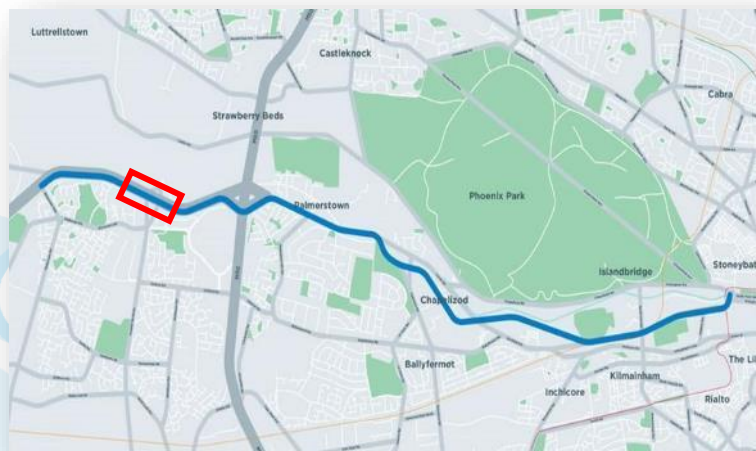
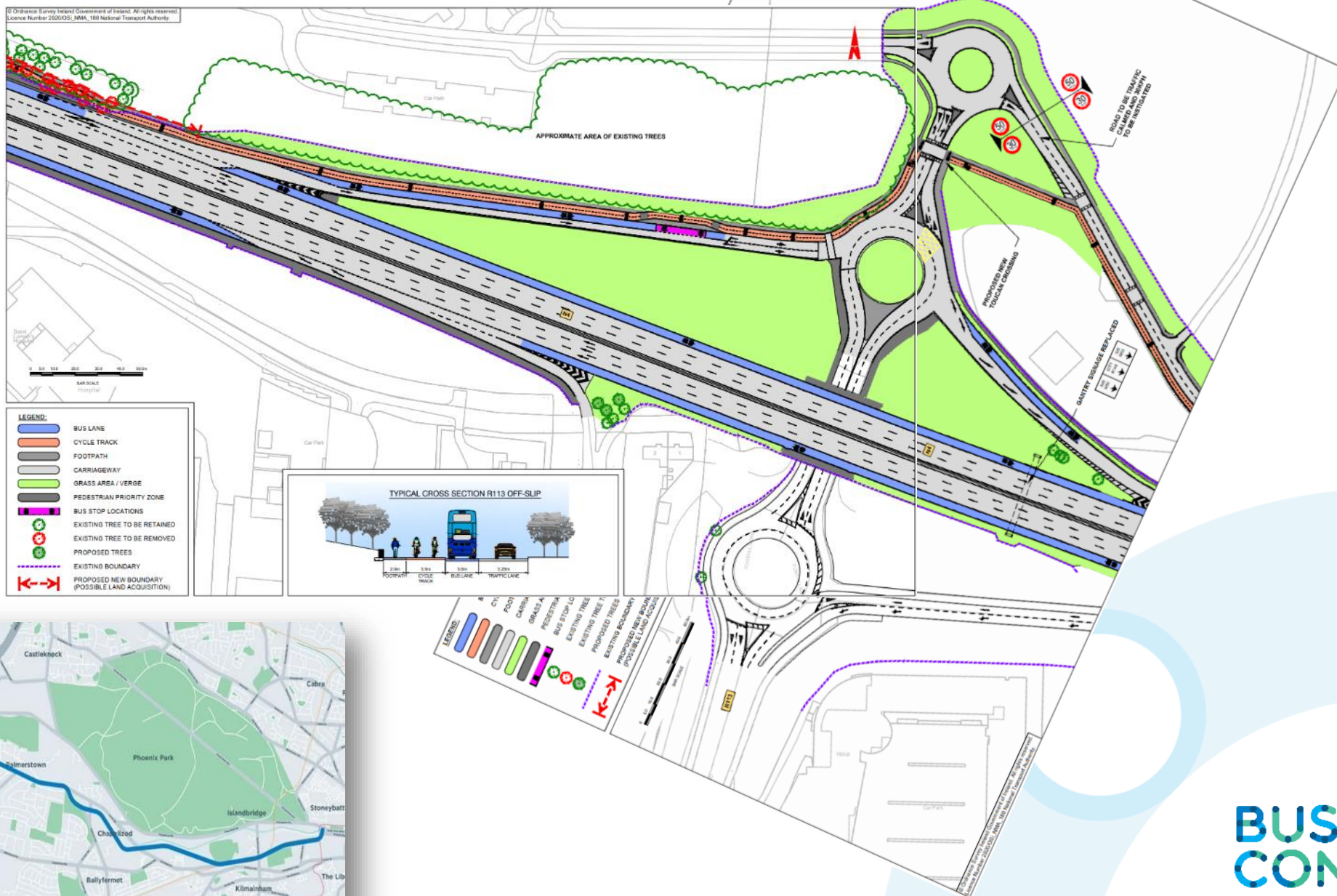


# Hermitage Golf Club

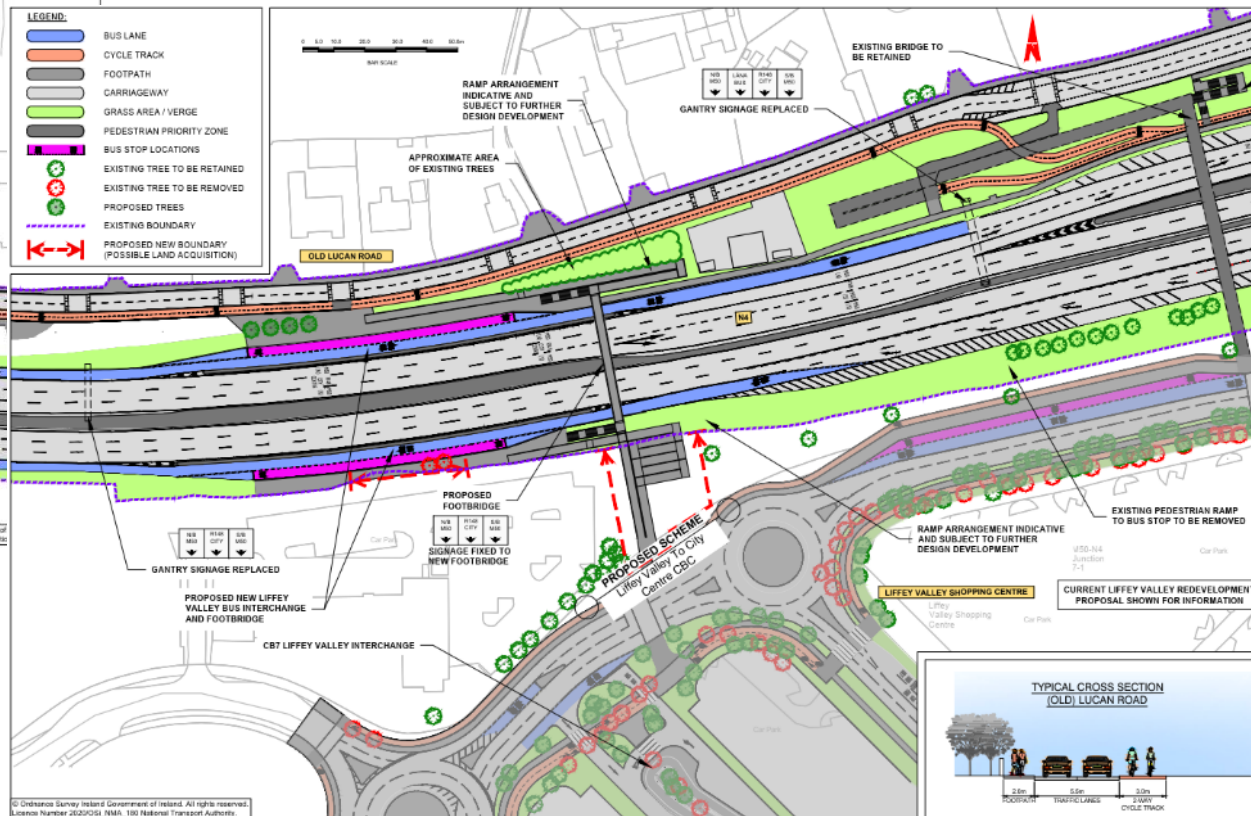
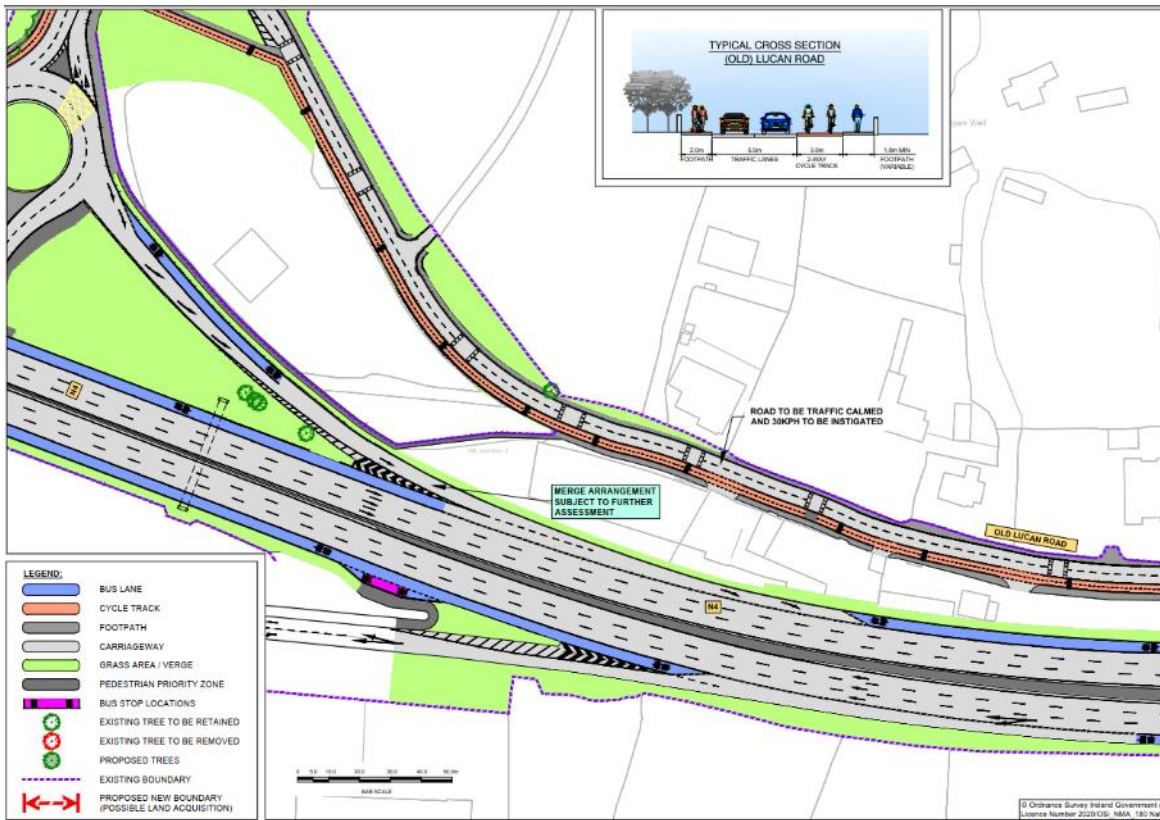


Source of background image: ©Google 2020

© Ordnance Survey Ireland Government of Ireland. All rights reserved.  
Licence Number 2202/OSI/NMA\_180 National Transport Authority

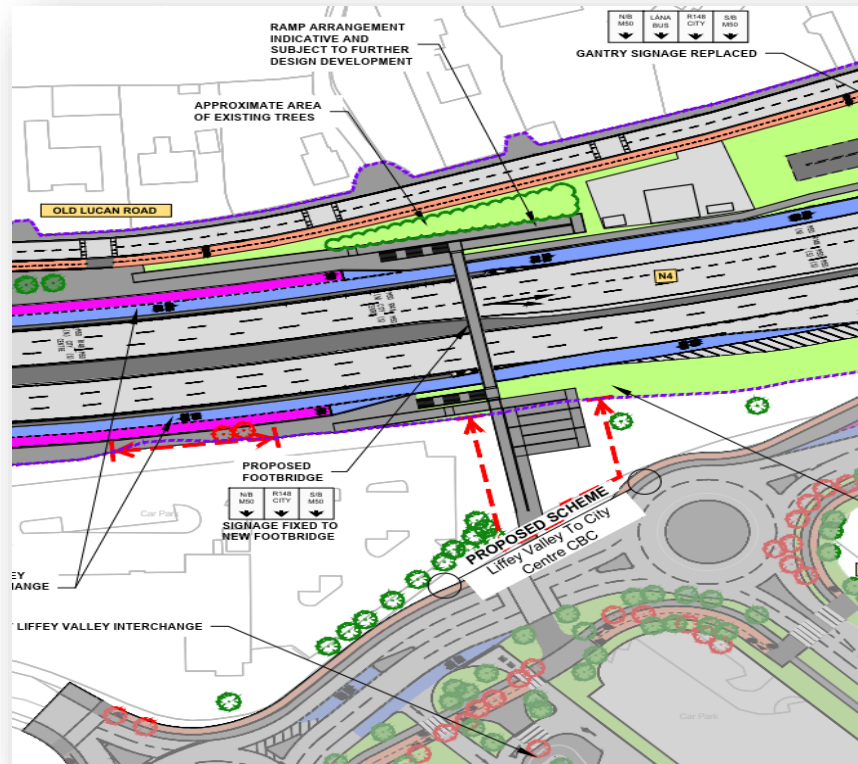
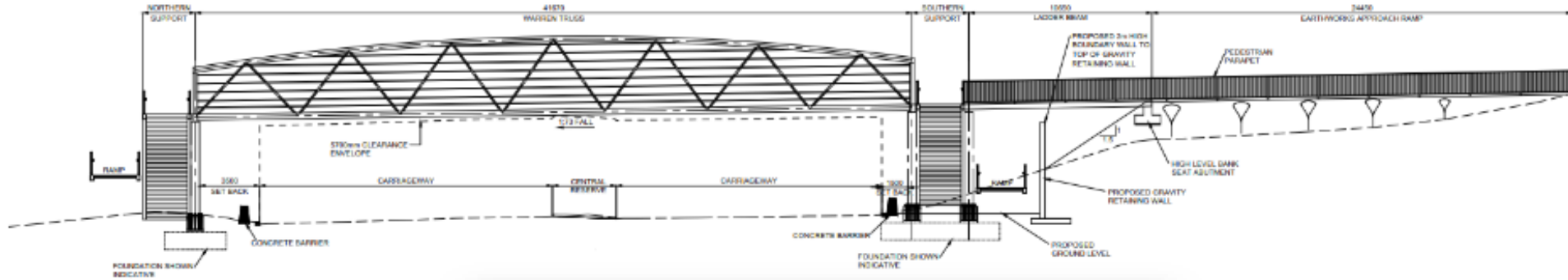


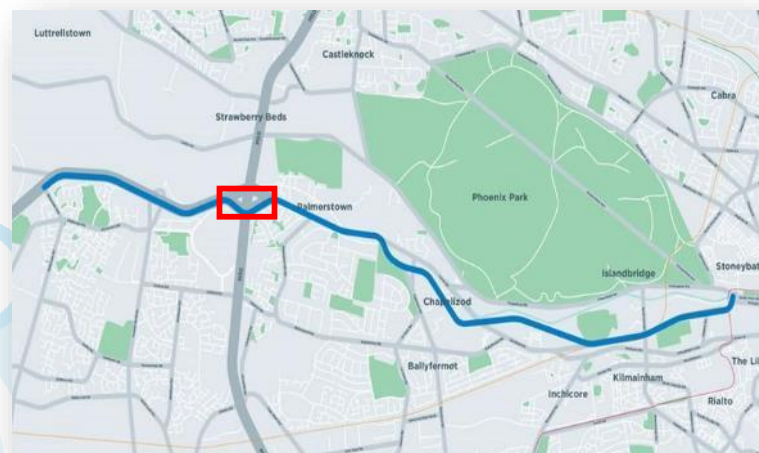
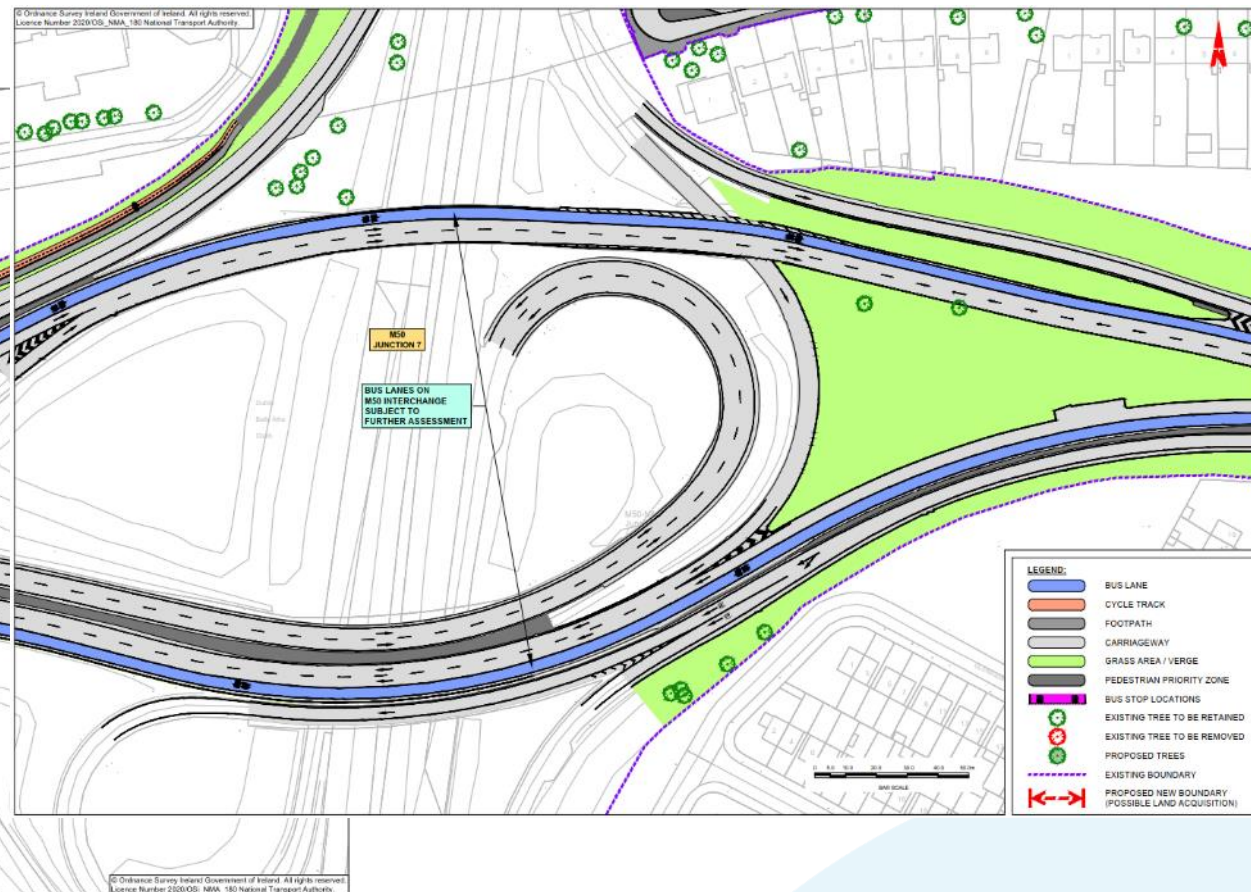
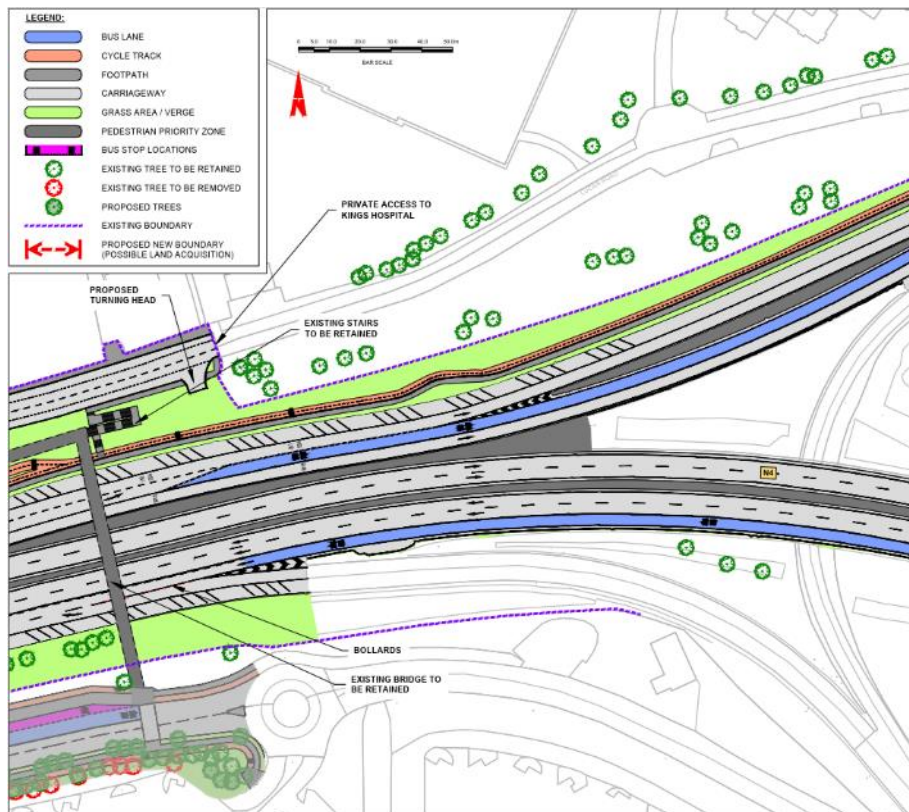






# New Pedestrian Bridge at Liffey Valley











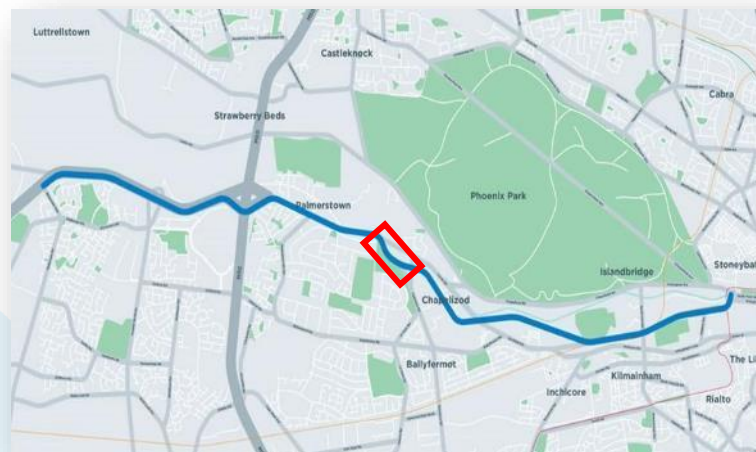
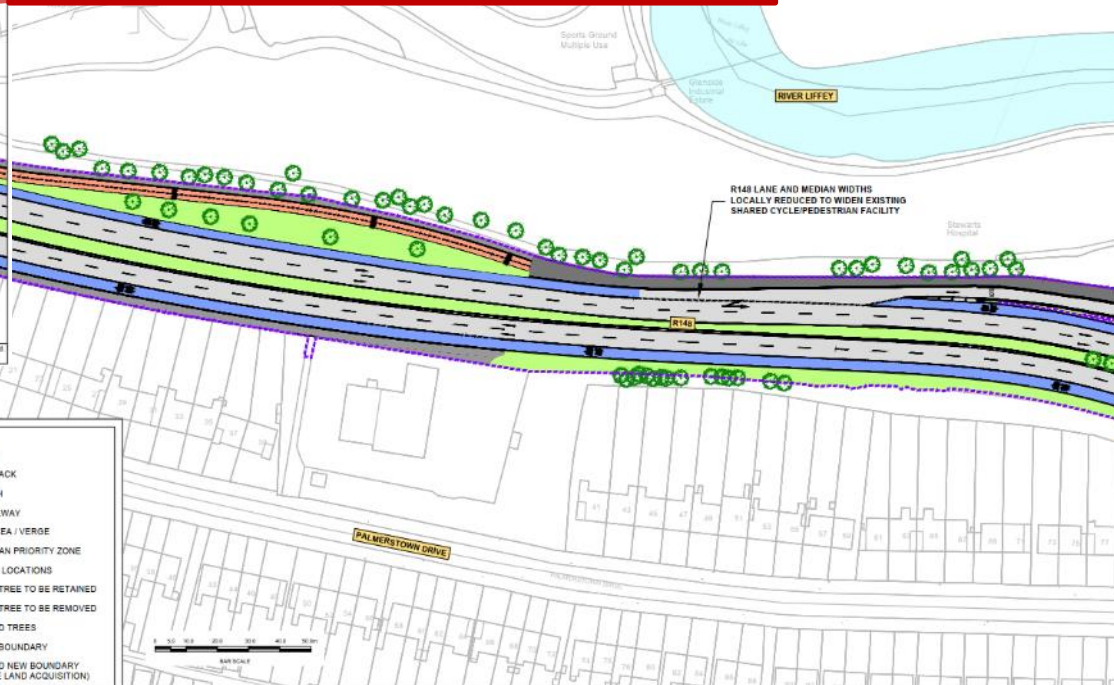
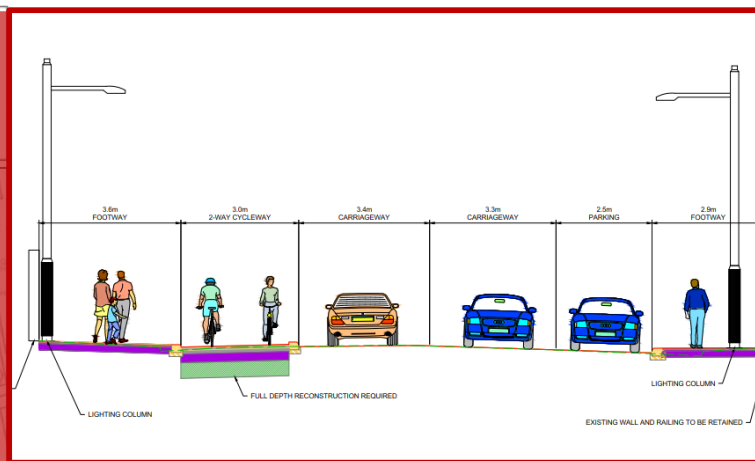
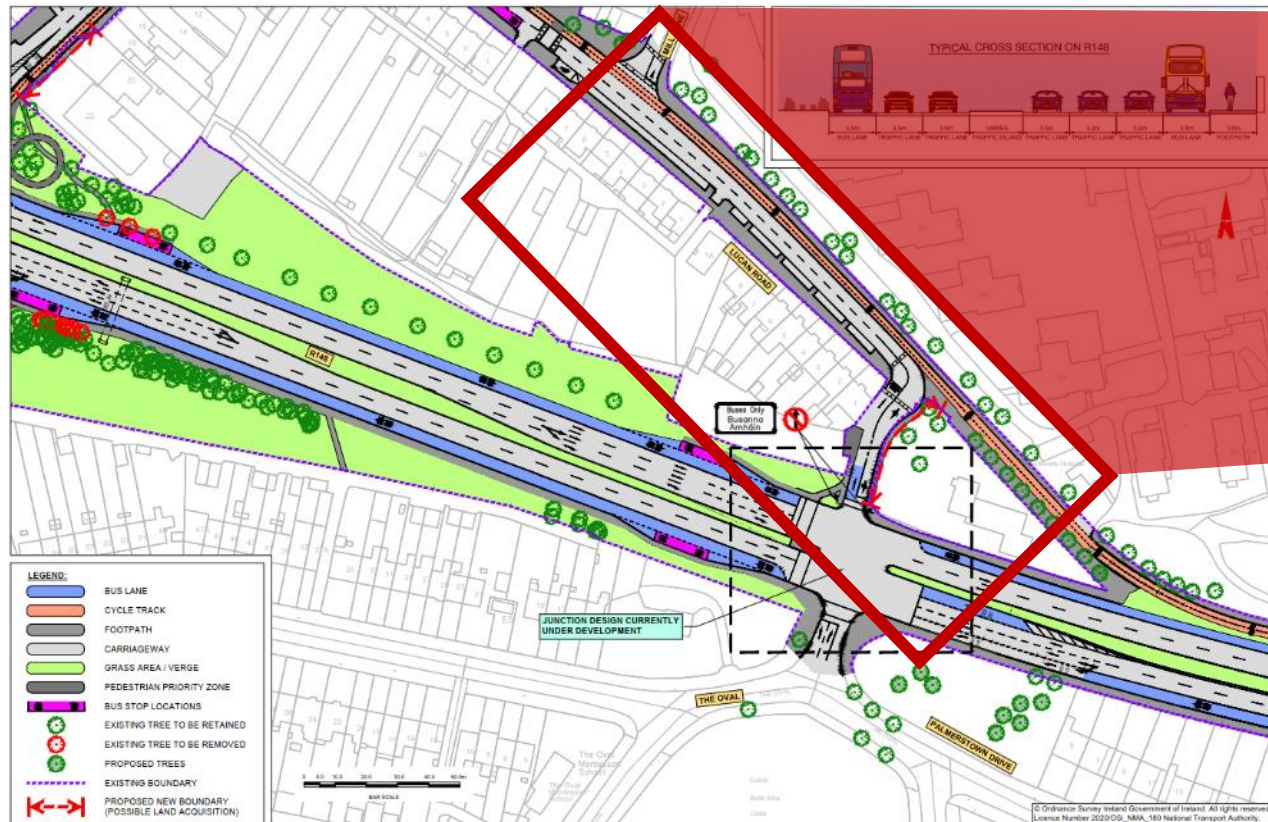
## Old Lucan Road, Palmerstown



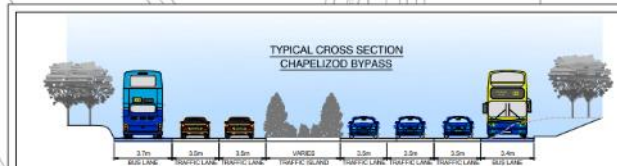
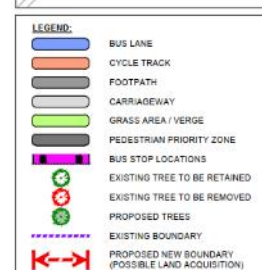
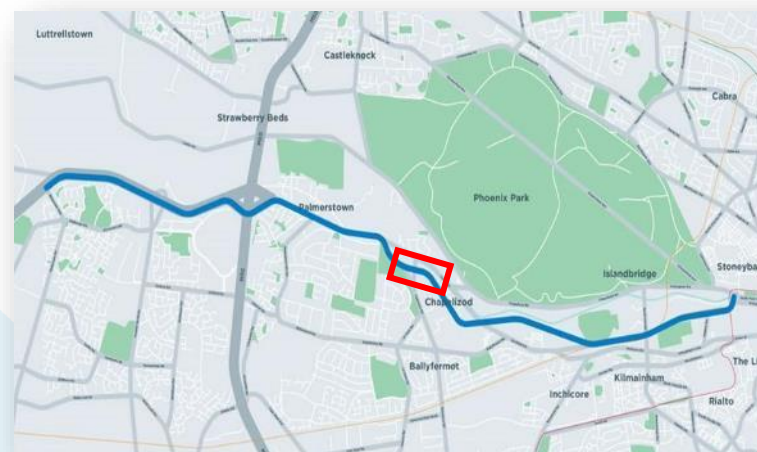
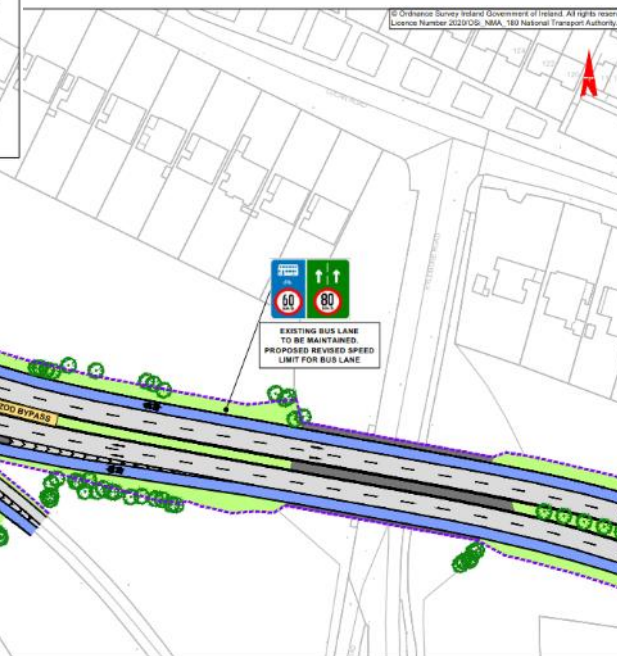
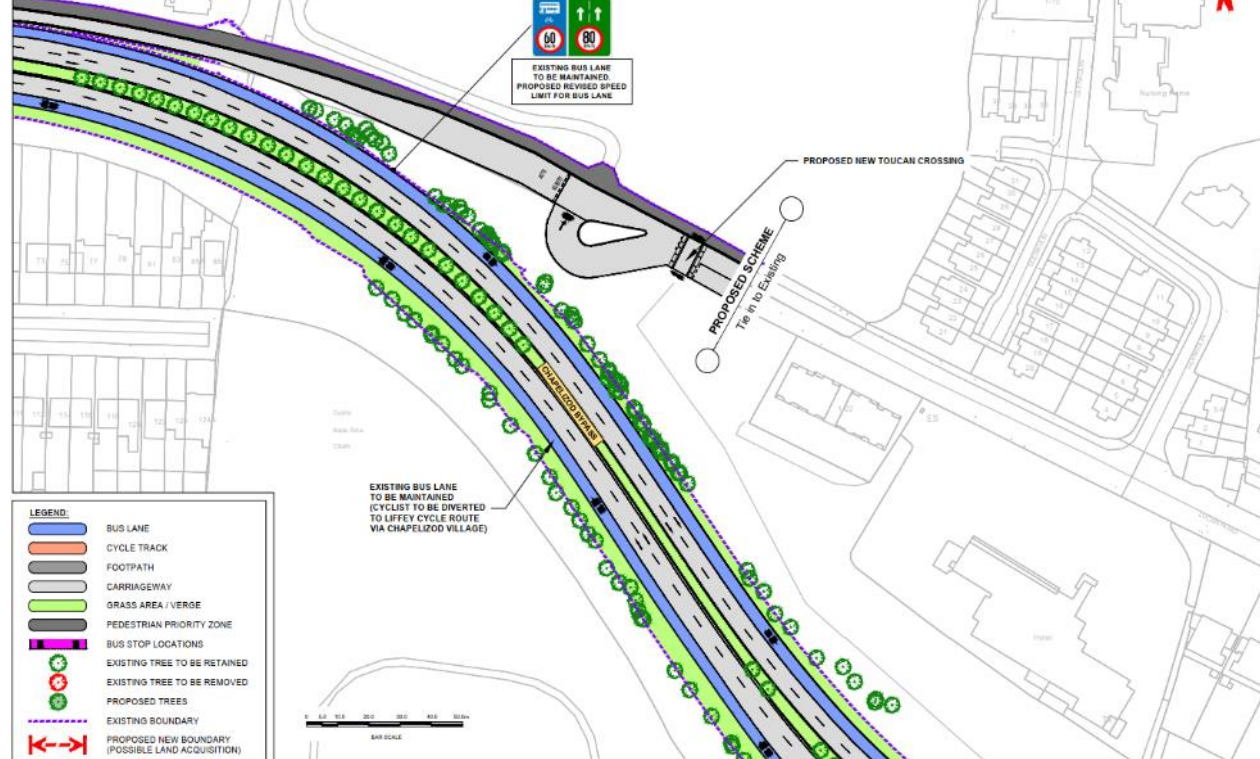




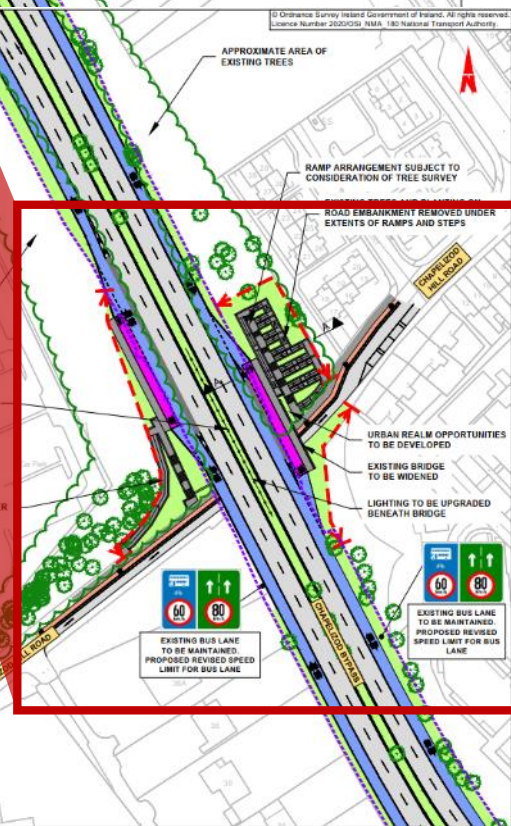
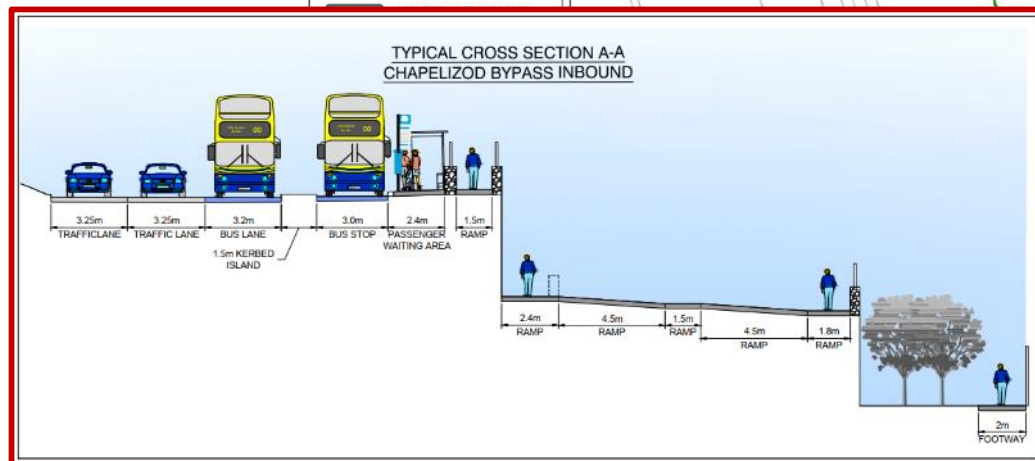
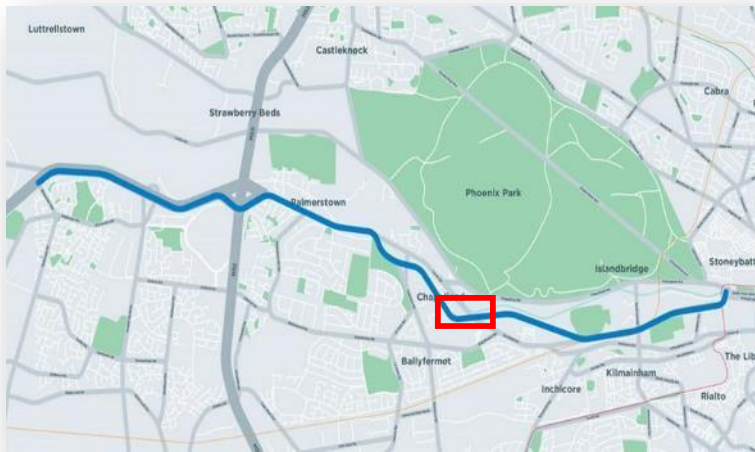




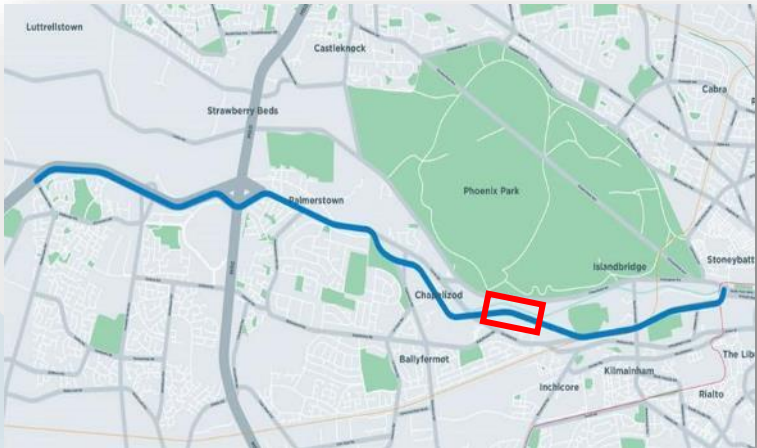
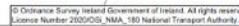




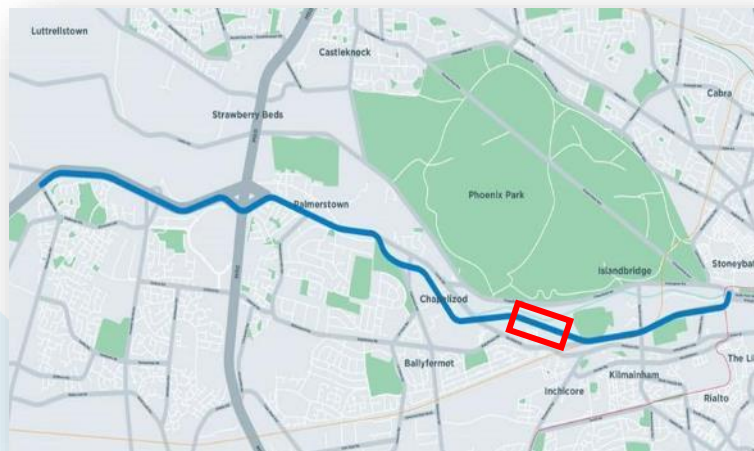
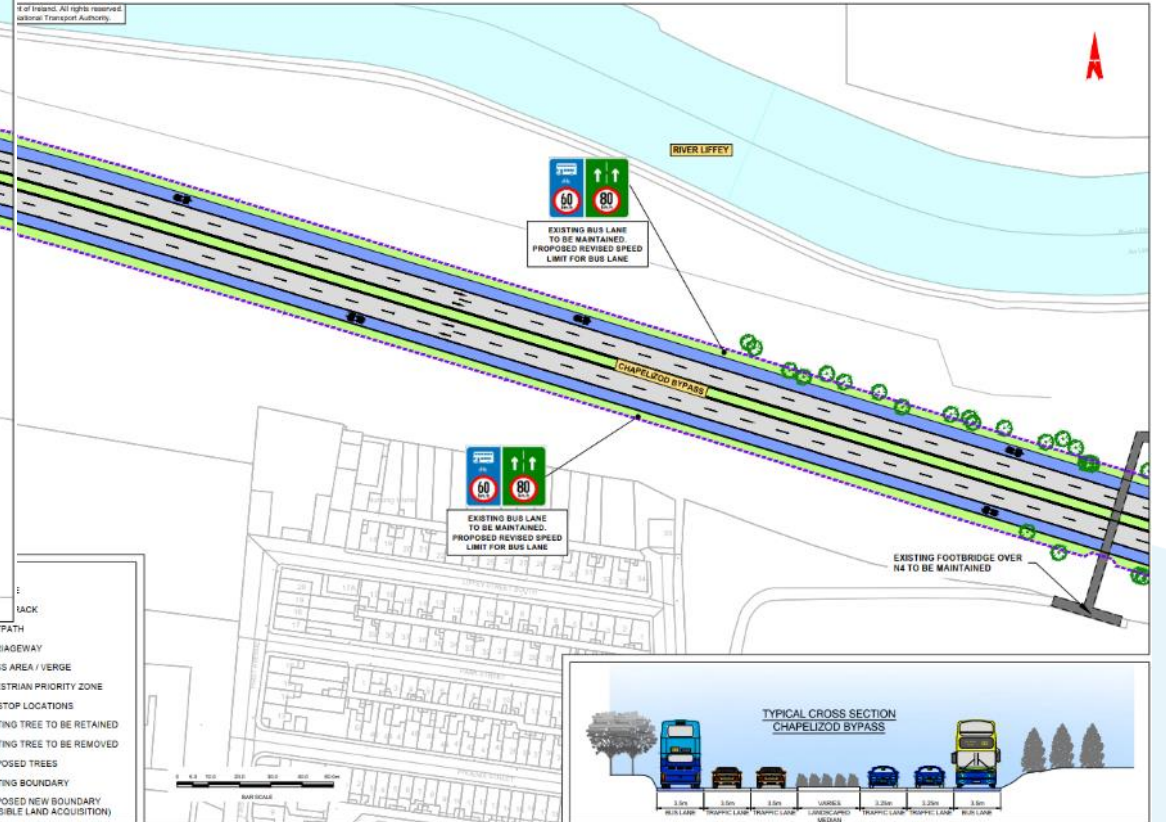




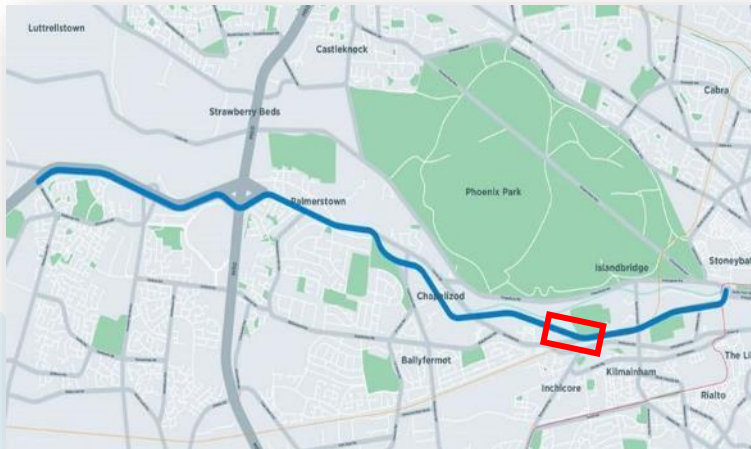
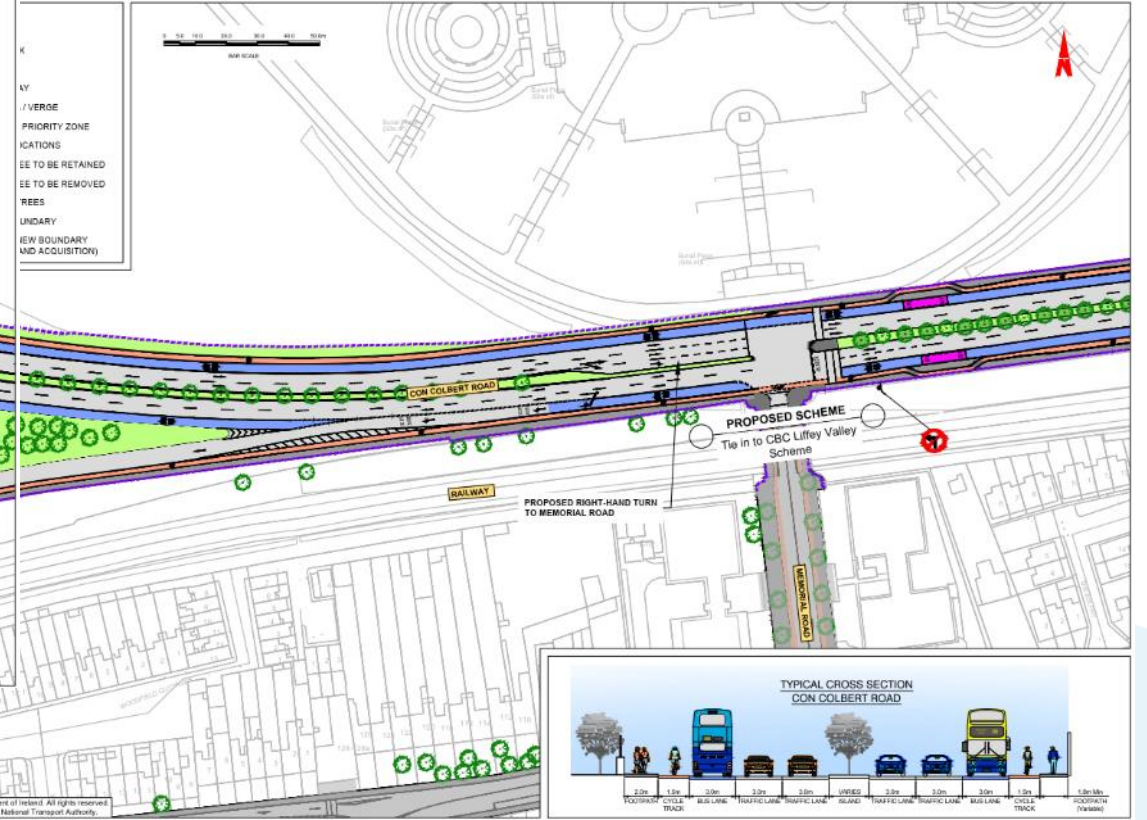
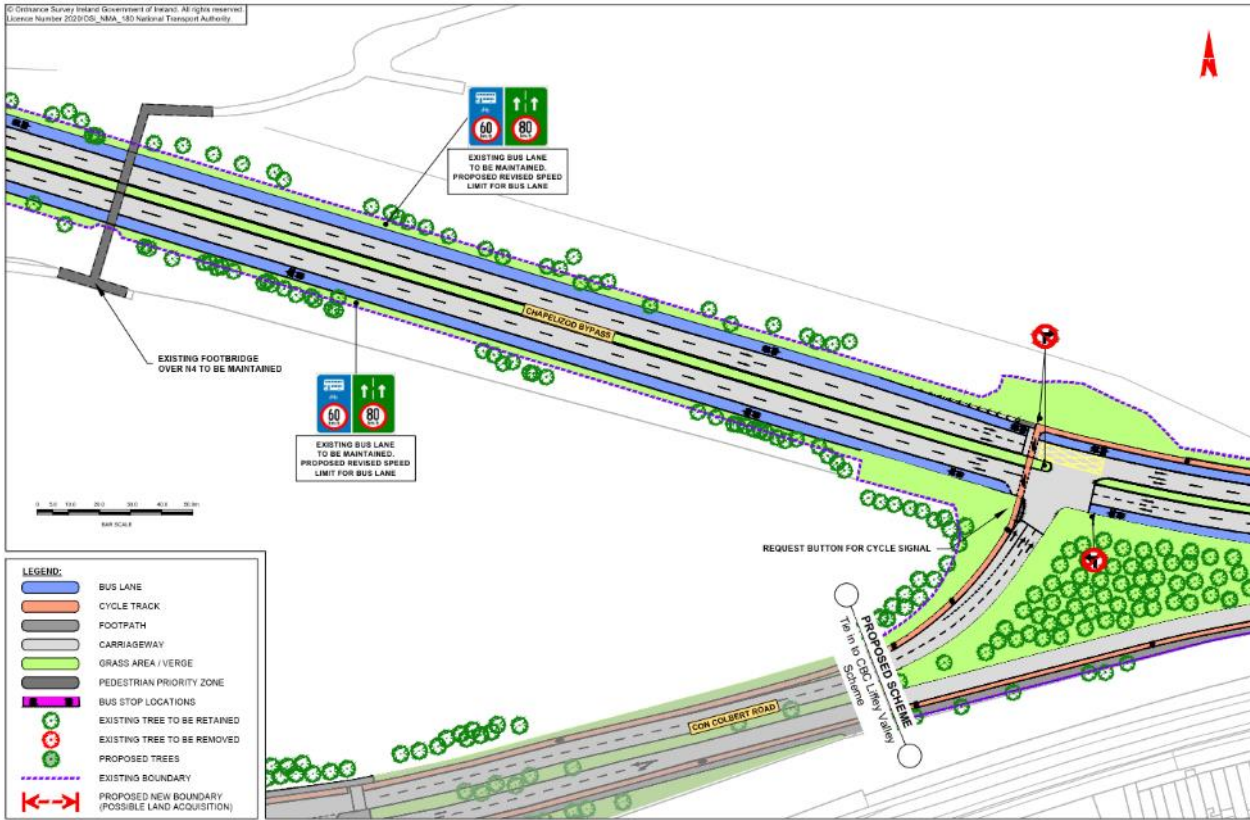




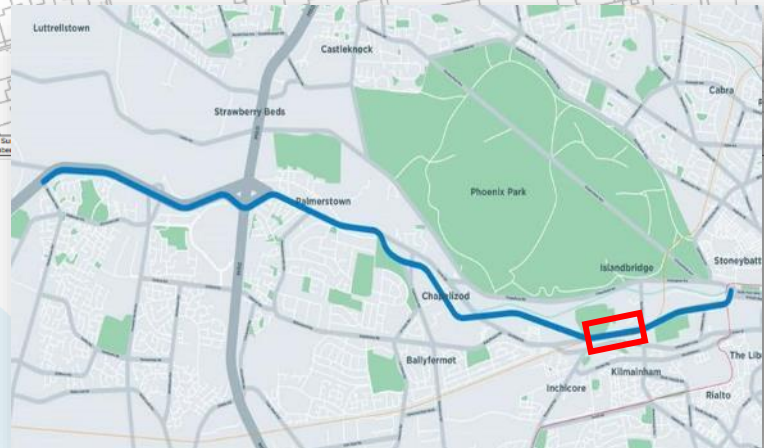
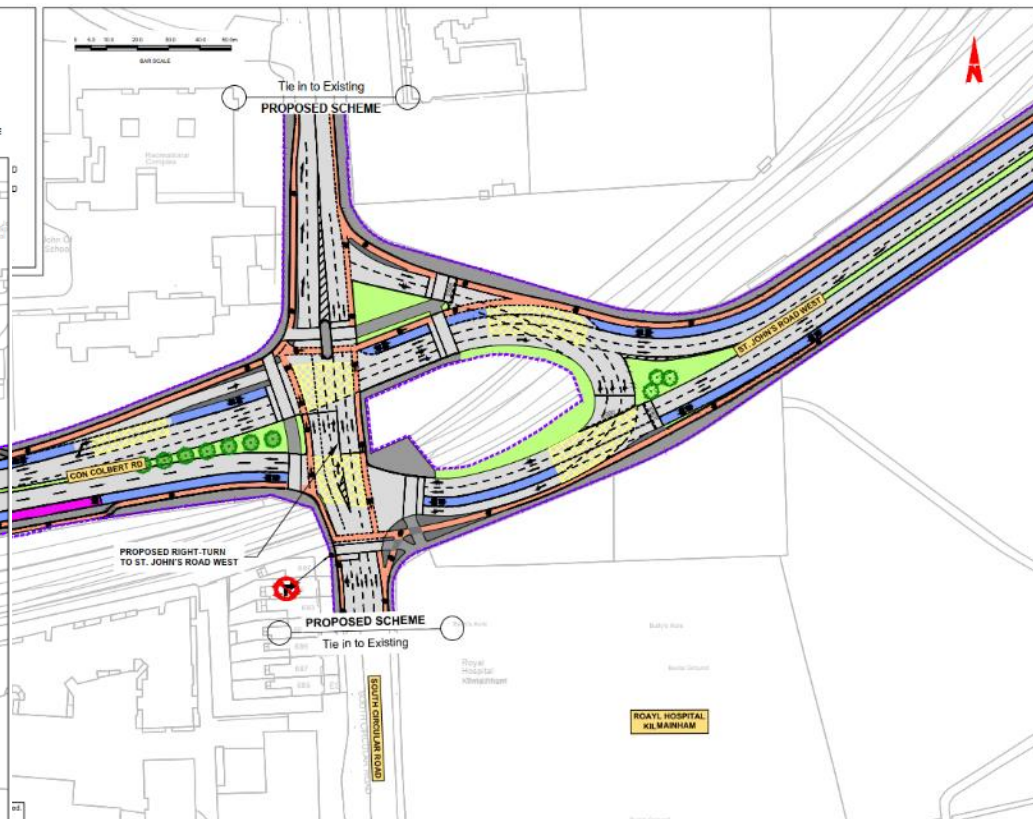
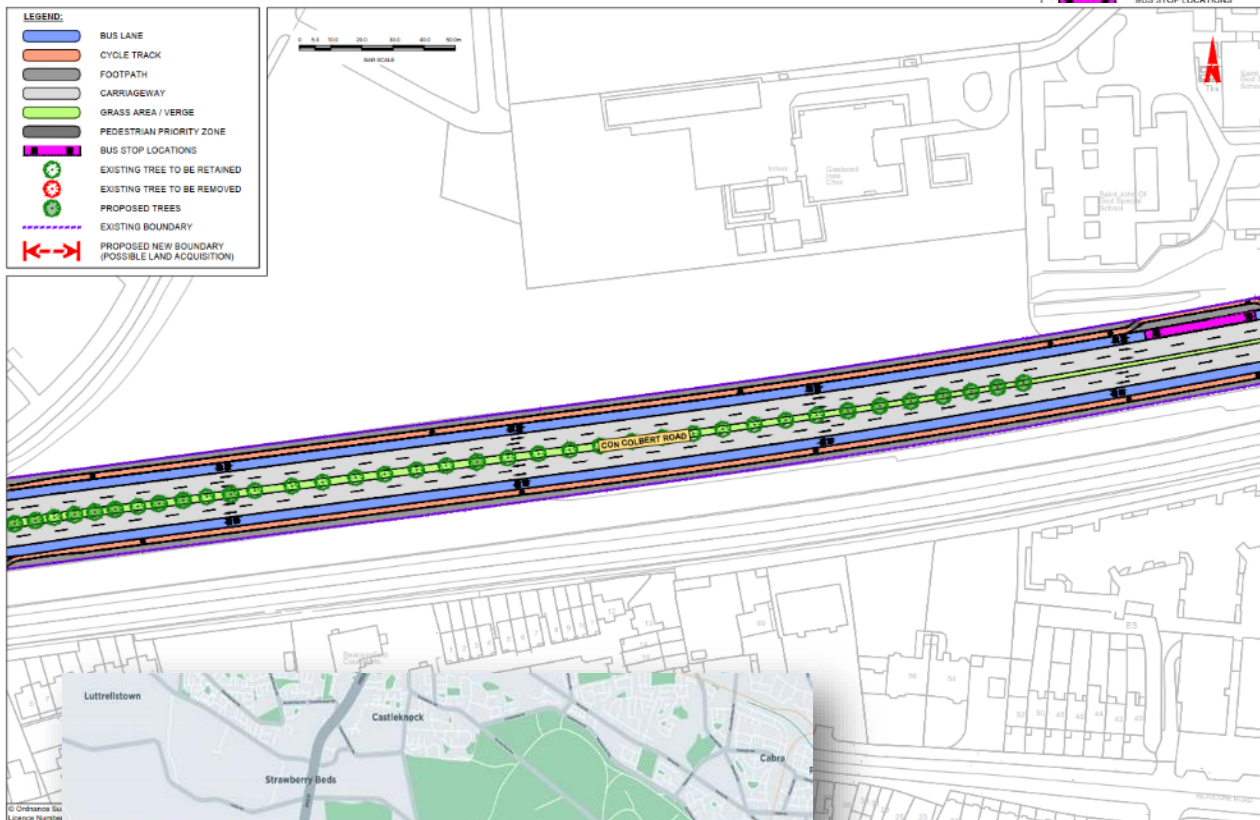
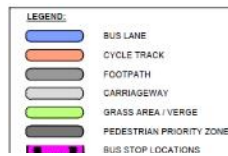
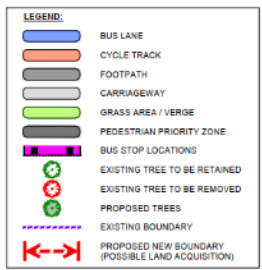


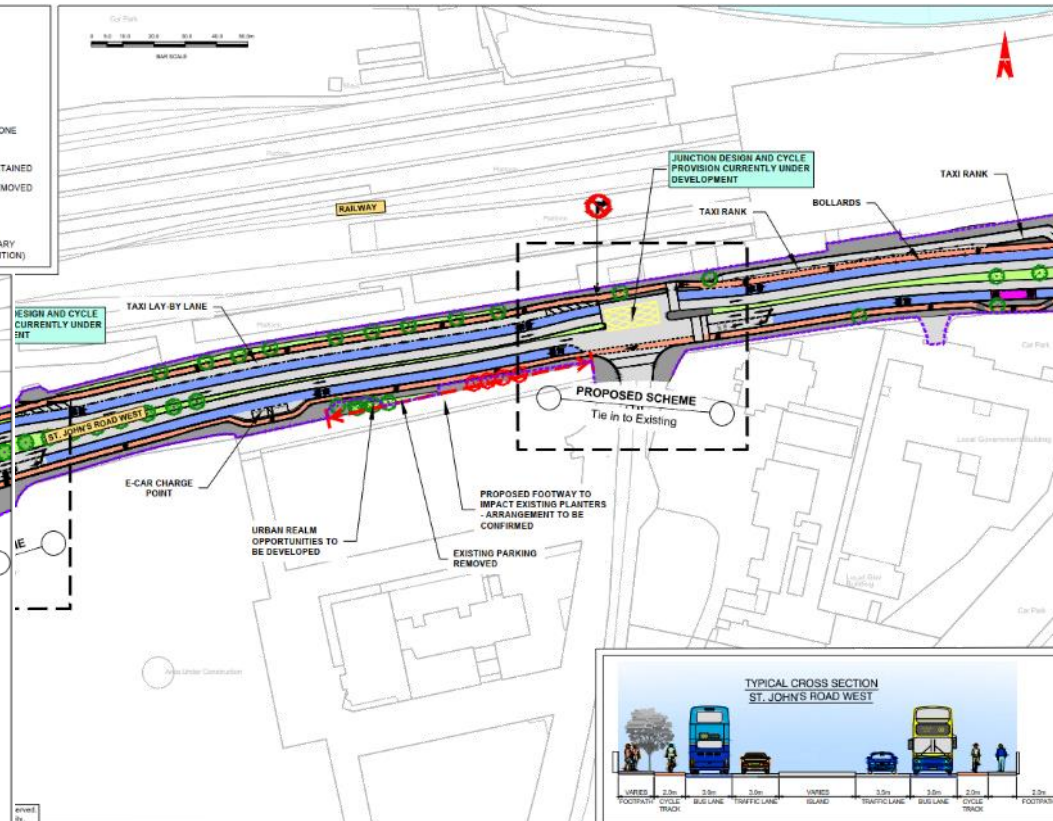
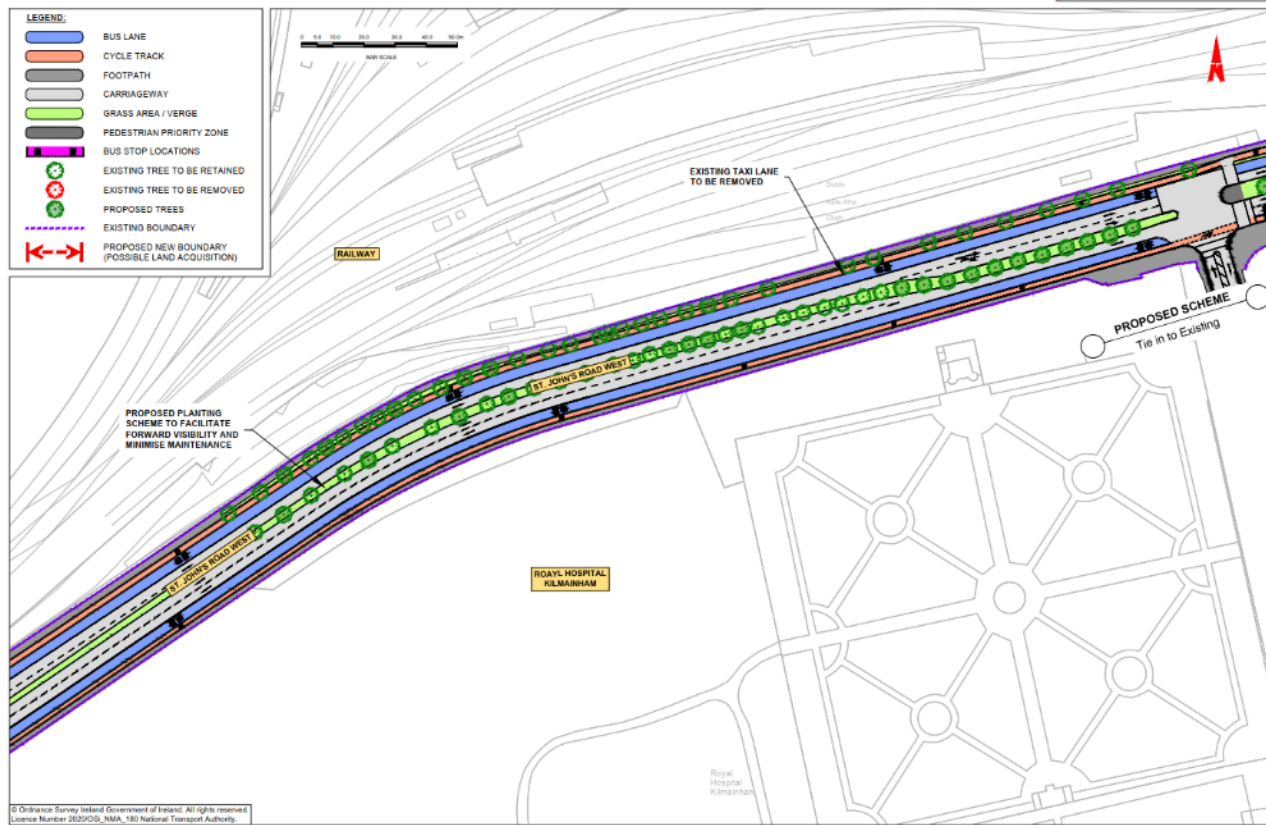










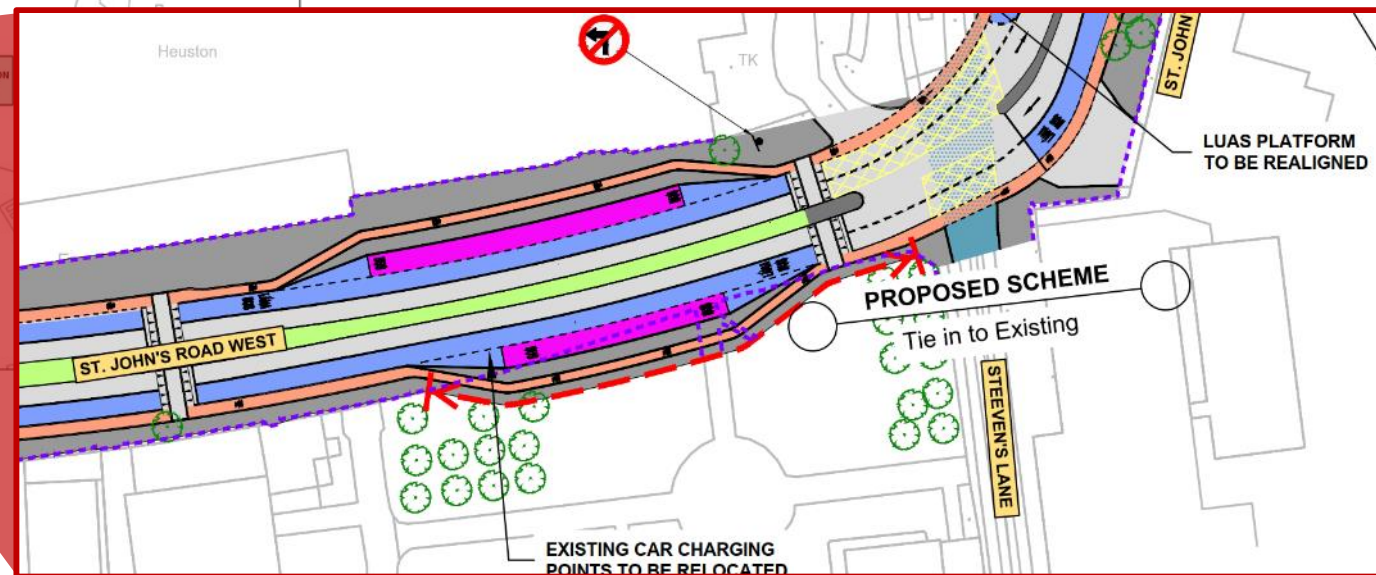
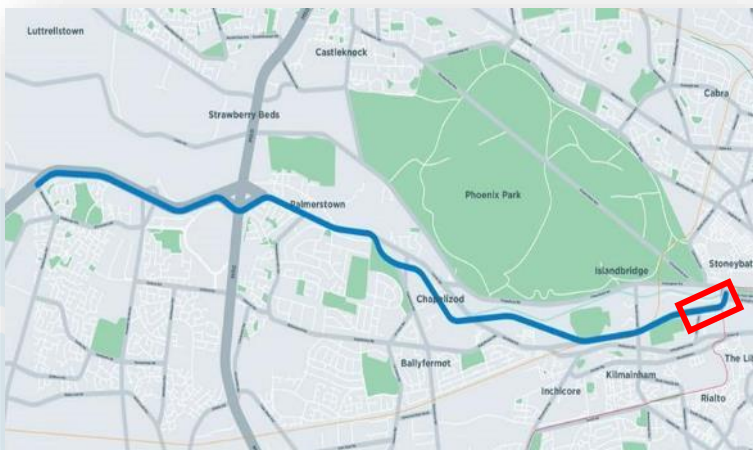
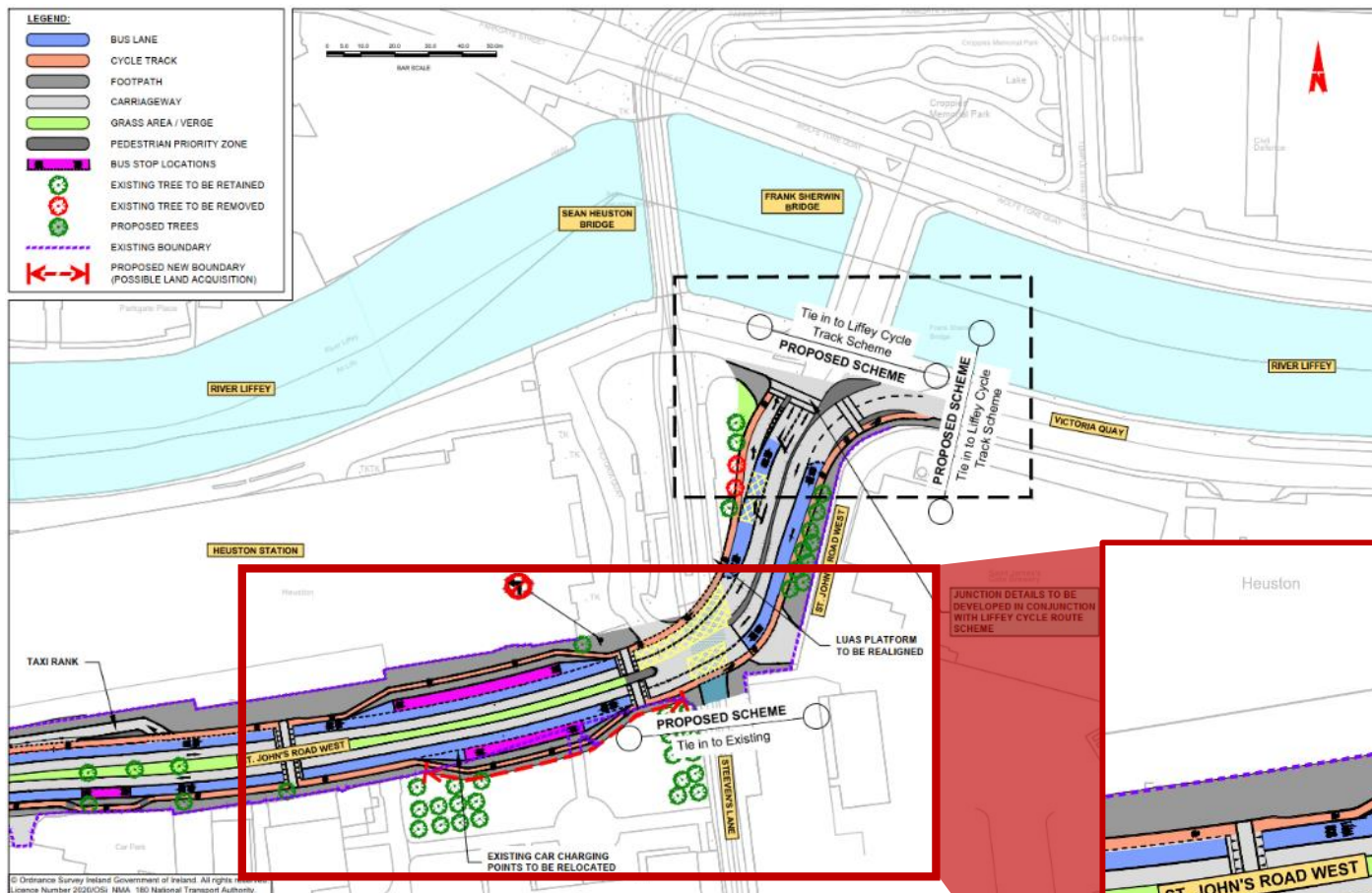




## St John's Road West









## Heuston Station, St John's Road



# How to Engage?



# How to Engage?

- Consultation on the proposals runs until **16 December**.
- Virtual consultation rooms for each Core Bus Corridor can be found on [www.busconnects.ie](http://www.busconnects.ie).
- Submissions and observations may be made by:
  - **Email** - [cbc@busconnects.ie](mailto:cbc@busconnects.ie)
  - **Post** - Core Bus Corridor Project, National Transport Authority, Dún Scéine, Harcourt Lane, Dublin 2, D02 WT20.

# Questions and Answers

If you wish to ask a question to the NTA panel, please type your Name and your Organisation into the 'Chat' box.

When you are called upon sequentially by the Independent Chairperson to ask your question, the Webinar host will UNMUTE your microphone and you will receive a 'prompt' or 'notification' to your screen to unmute. You can then proceed to ask your question.

Please keep your question concise so that we can take questions from all the community groups/organisations on the webinar.



# How to Engage?

- Consultation on the proposals runs until **16 December**.
- Virtual consultation rooms for each Core Bus Corridor can be found on [www.busconnects.ie](http://www.busconnects.ie).
- Submissions and observations may be made by:
  - **Email** - [cbc@busconnects.ie](mailto:cbc@busconnects.ie)
  - **Post** - Core Bus Corridor Project, National Transport Authority, Dún Scéine, Harcourt Lane, Dublin 2, D02 WT20.