

**BUS
CONNECTS**

TRANSFORMING CITY BUS SERVICES



Project Ireland 2040
Building Ireland's Future



Údarás Náisiúnta Iompair
National Transport Authority

*Second Community Forum
for*

*Clongriffin to City Centre Core
Bus Corridor*

11th September 2019



Introductions



CHAIRPERSON – CHARLIE LOWE

HUGH CREEGAN – Deputy CEO, NTA

CON KEHELY– Senior Project Manager, BusConnects

Paula Gillan - Aecom

JOSEPH SEYMOUR – Aecom

AGENDA



- Introduction
- Overview of BusConnects
- Recap of Actions
- Review of Submissions
- Indications of Designs under Consideration
- Q&A's

BUS CONNECTS

TRANSFORMING CITY BUS SERVICES



Core Bus Corridors providing continuous bus priority



Redesign of Network of Bus Services



State-of-the-art Ticketing System



Simpler Fare Structure



Cashless Payment System



Park & Ride facilities



New Bus Livery



New Bus Stops + Shelters



Use of Low Emission Vehicles

Recap of Actions from First Community Forum



- To review width of footpath at Lower Artane Cottages and examine potential of increased widening on opposite side of road.
- To review traffic movements from Fairview into Marino Mart and consider use of bollards to reduce through running.
- To refine the layouts for cycling at junctions along scheme.

All actions for delivery as part of next design stage of project.

**BUS
CONNECTS**

TRANSFORMING CITY BUS SERVICES



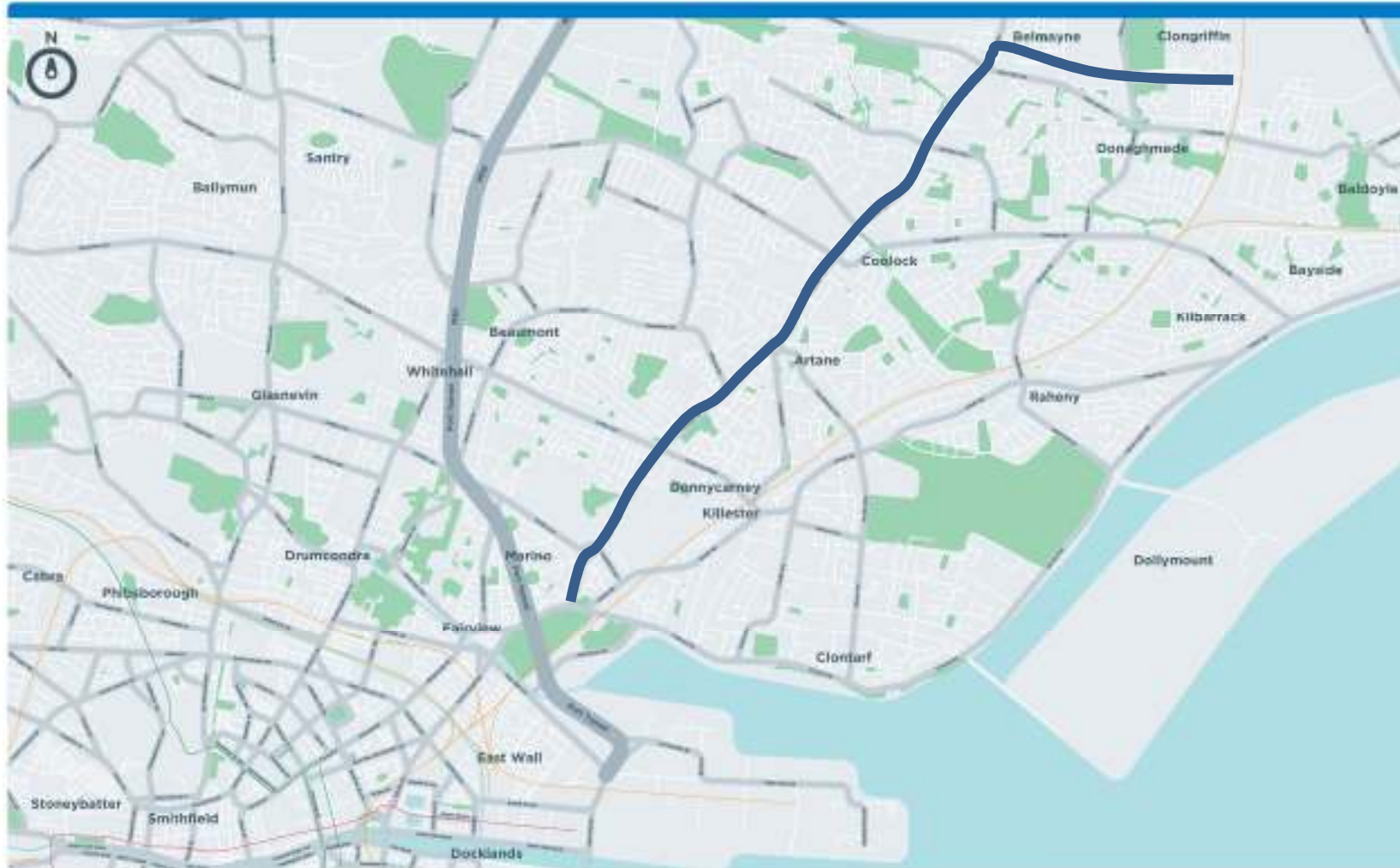
Review of Submissions



Clongriffin to City Centre

**BUS
CONNECTS**

TRANSFORMING CITY BUS SERVICES

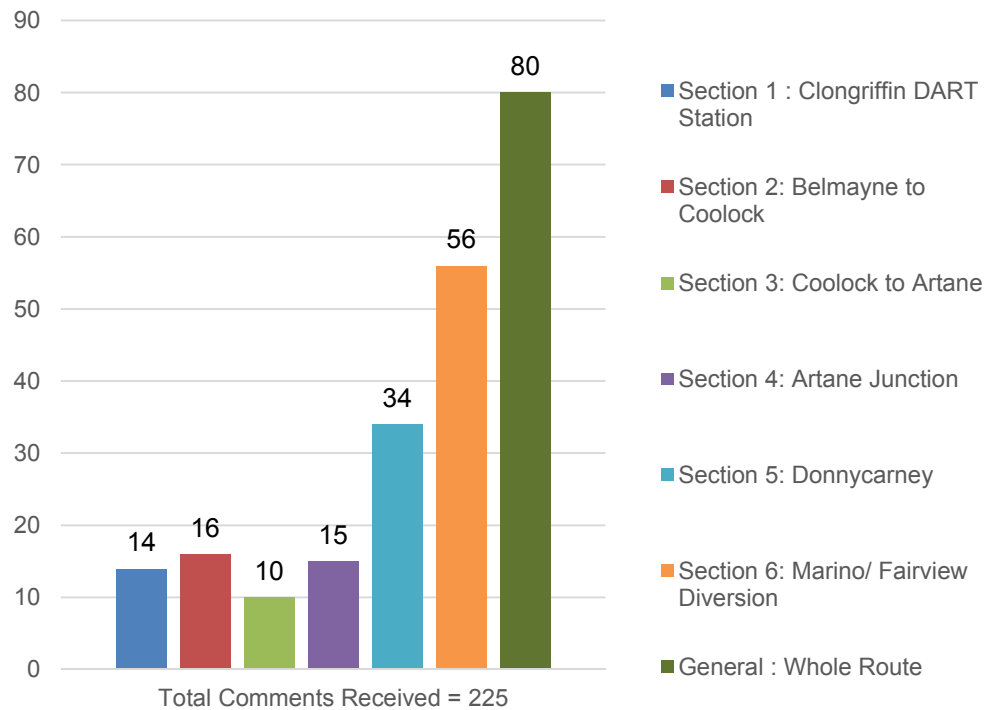


NOTE: The Emerging Preferred Route shown on the following drawings is indicative only and is subject to change following consultation and as part of the design development process.

Initial Consultation Process

Where did the observations relate too?

Processed Comments within the 91 Submissions



Initial Consultation Process

Who sent in Observations?



91% from
residents

Initial Consultation Feedback

Themes Raised in Submissions:

Theme	Frequency
Accessibility/ Traffic Impact	48
Pedestrian and Driver Safety	22
Cyclist Safety	41
Suggestions and New Ideas	38
Environmental Sustainability	22
Land use	18
Social Impact	25
Heritage	6
Economy	5

Submissions Summary

Main Issues



Main Issues Raised

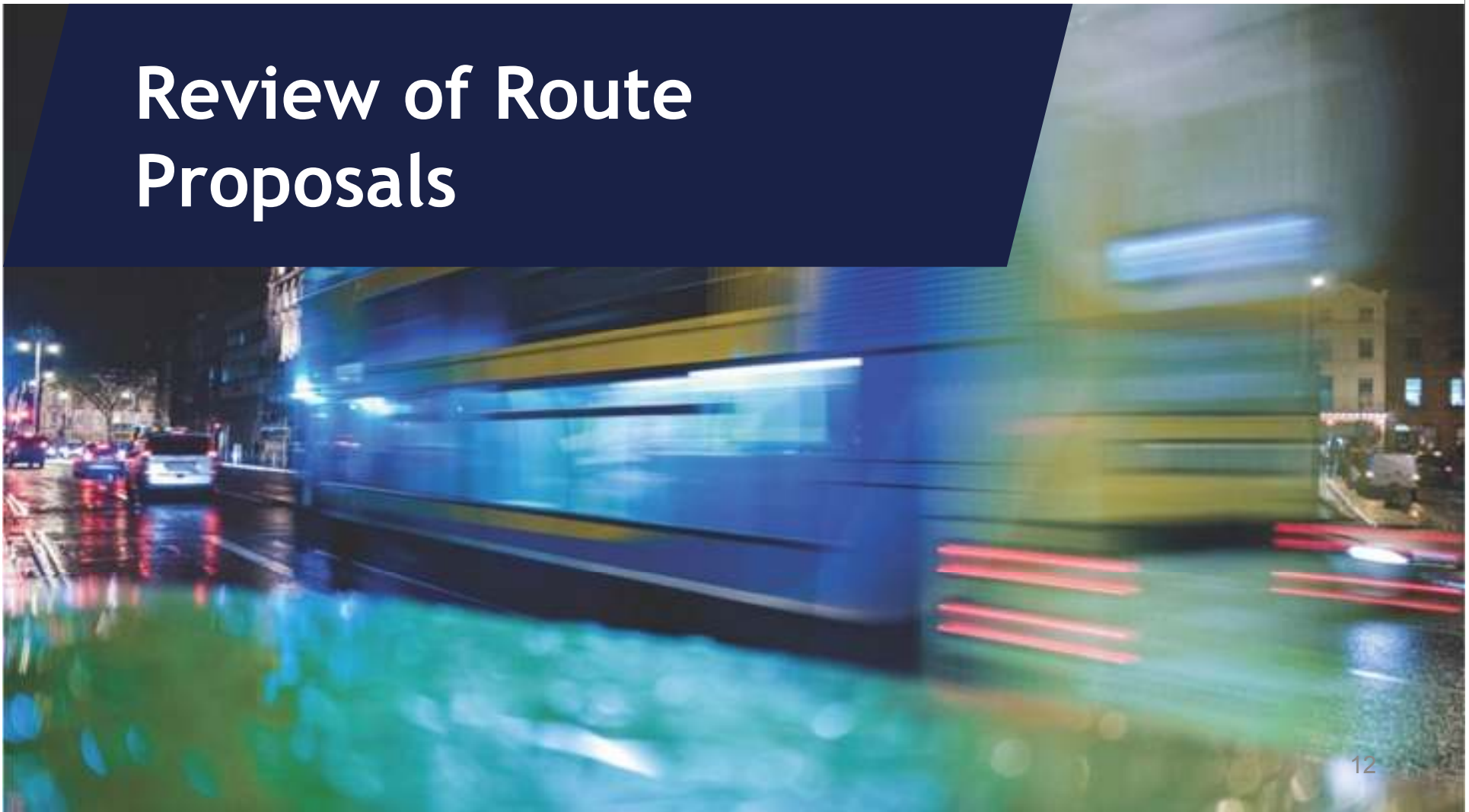
Road User Impacts	<ul style="list-style-type: none">• Reduced capacity• Loss of parking• “Rat-running” through Marino• DPT closure traffic• Accessibility for the Mobility Impaired
Cycling Facilities	<ul style="list-style-type: none">• More segregation of cycle facilities• Loss of continuity and diversion route at Marino
Property Impacts	<ul style="list-style-type: none">• Usability of Driveways• Accessibility for the Mobility Impaired• Noise and privacy• Loss of Property Value
Urban Design Impact	<ul style="list-style-type: none">• Loss of trees• Impact on Streetscape

**BUS
CONNECTS**

TRANSFORMING CITY BUS SERVICES



Review of Route Proposals



Amendments being Considered.



Two-way Cycle Lane
north of Priorswood/
Blunden Drive serving
Shopping Centre

Amendments being Considered.

**BUS
CONNECTS**

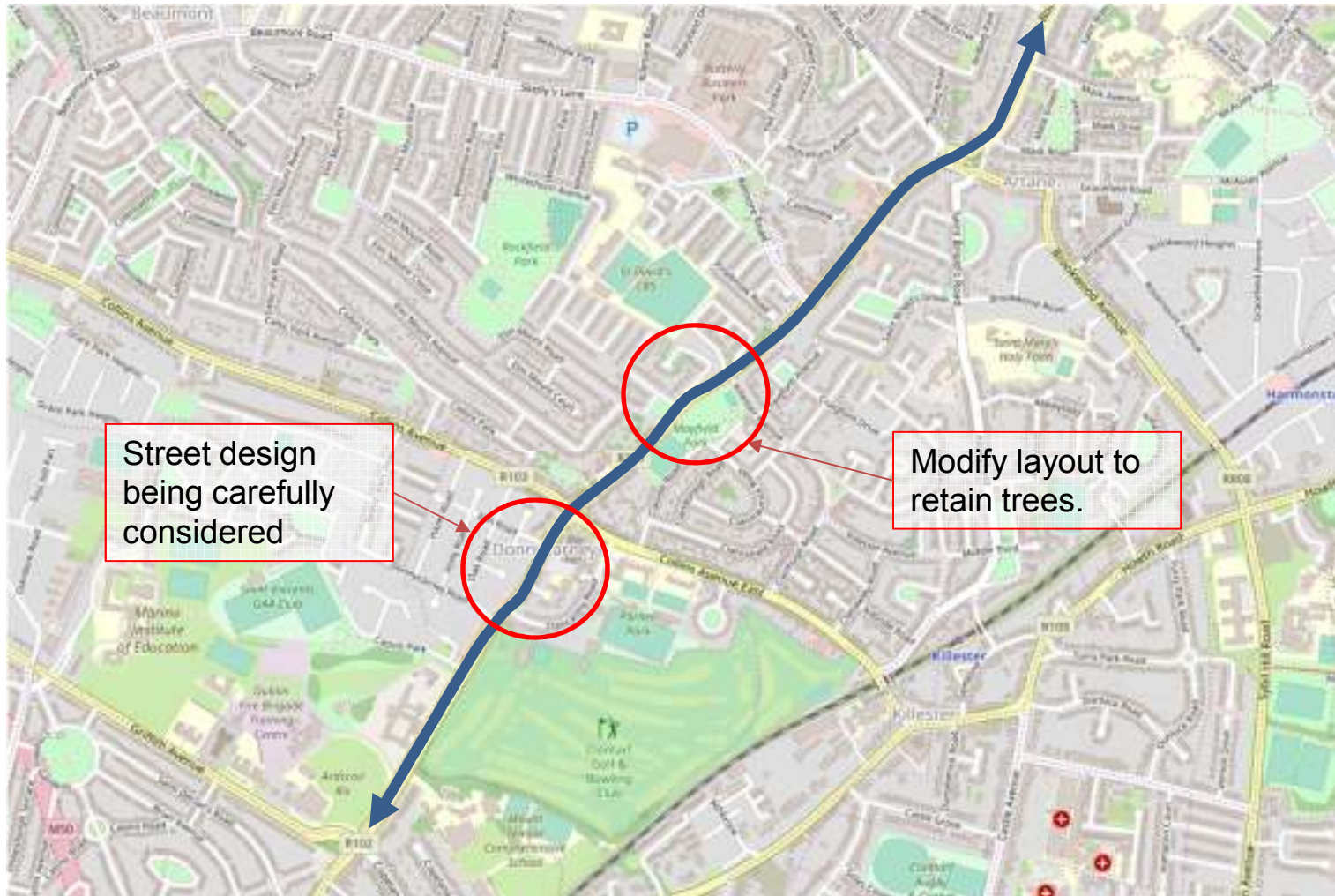
TRANSFORMING CITY BUS SERVICES



Cyclist Segregation



Amendments being Considered.



Amendments being Considered.

**BUS
CONNECTS**

TRANSFORMING CITY BUS SERVICES



Amendments being Considered.

**BUS
CONNECTS**

TRANSFORMING CITY BUS SERVICES



Amendments being Considered.

**BUS
CONNECTS**

TRANSFORMING CITY BUS SERVICES



Amendments being Considered.

**BUS
CONNECTS**

TRANSFORMING CITY BUS SERVICES



Amendments being Considered.

**BUS
CONNECTS**

TRANSFORMING CITY BUS SERVICES



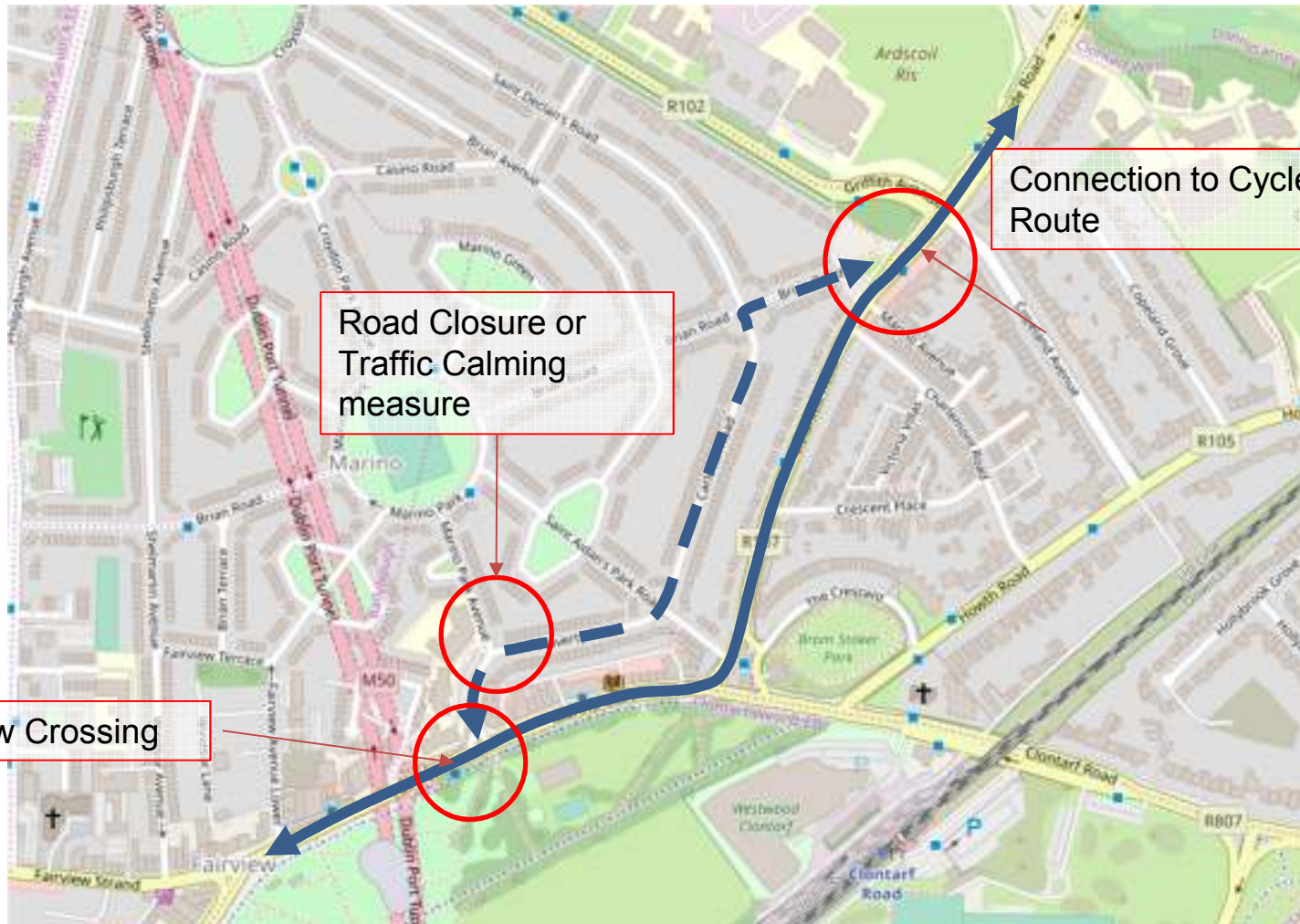
Amendments being Considered.

**BUS
CONNECTS**

TRANSFORMING CITY BUS SERVICES



Marino.



Amendments being Considered.

**BUS
CONNECTS**

TRANSFORMING CITY BUS SERVICES



Source: Google Maps

Amendments being Considered.

**BUS
CONNECTS**

TRANSFORMING CITY BUS SERVICES



Source: Cycling Embassy of GB, IrishCycling.com

General items under consideration



General items under consideration



Pedestrian Facilities

Cycle Routes

Bus Priority Arrangements

Urban Realm Improvements

Traffic Arrangements

**BUS
CONNECTS**

TRANSFORMING CITY BUS SERVICES



Discussion

