

© Office of Public Works
 © Environmental Protection Agency
 © 2014 DigitalGlobe © Getmapping plc © 2014 GeoE
 © 2014 Microsoft Corporation and its data suppliers

- Legend**
- OPW Flood Points Historical
 - Surface Water rpa
 - Surface Water
 - OPW Flood Extents Historical
 - OPW Flood Extents Fluvial Indicative 1PC AEP 100yr Event
 - OPW Flood Extents Fluvial Extreme Event
 - Approximate Study Area

- SW21
- SW20
- SW17
- SW16
- SW14
- PG3
- PG2
- PG1
- GE3
- GE2
- GE1

P0	2014-10-08	CS	CC	EF
Issue	Date	By	Chkd	Appd

ARUP

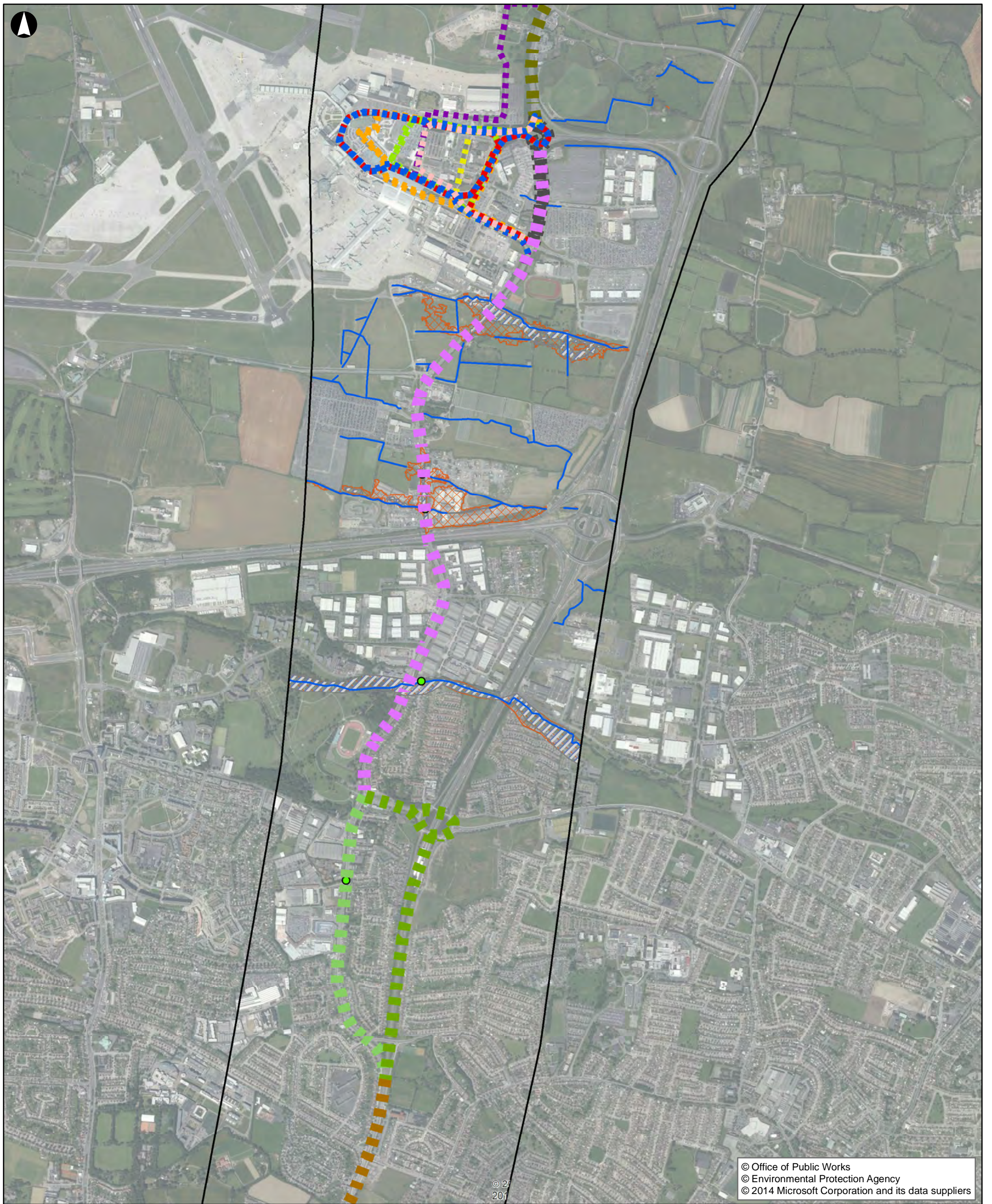
Client
National Transport Authority

Job Title
Swords / Airport to City Centre Swiftway

Hydrology Study Area - North
Figure 5.4.1

Not to scale

Job No 225244-10	Drawing Status Issue
----------------------------	--------------------------------



Legend

- OPW Flood Points Historical
 - Surface Water rpa
 - Surface Water
 - OPW Flood Extents Historical
 - OPW Flood Extents Fluvial Indicative 1PC AEP 100yr Event
 - OPW Flood Extents Fluvial Extreme Event
 - Approximate Study Area
- F1
 - SY2
 - SY1
 - SY4
 - DA7
 - DA6
 - DA5
 - DA4
 - DA3
 - DA2
 - DA1
 - DA0
 - SW21

P0	2014-10-08	CS	CC	EF
Issue	Date	By	Chkd	Appd

ARUP

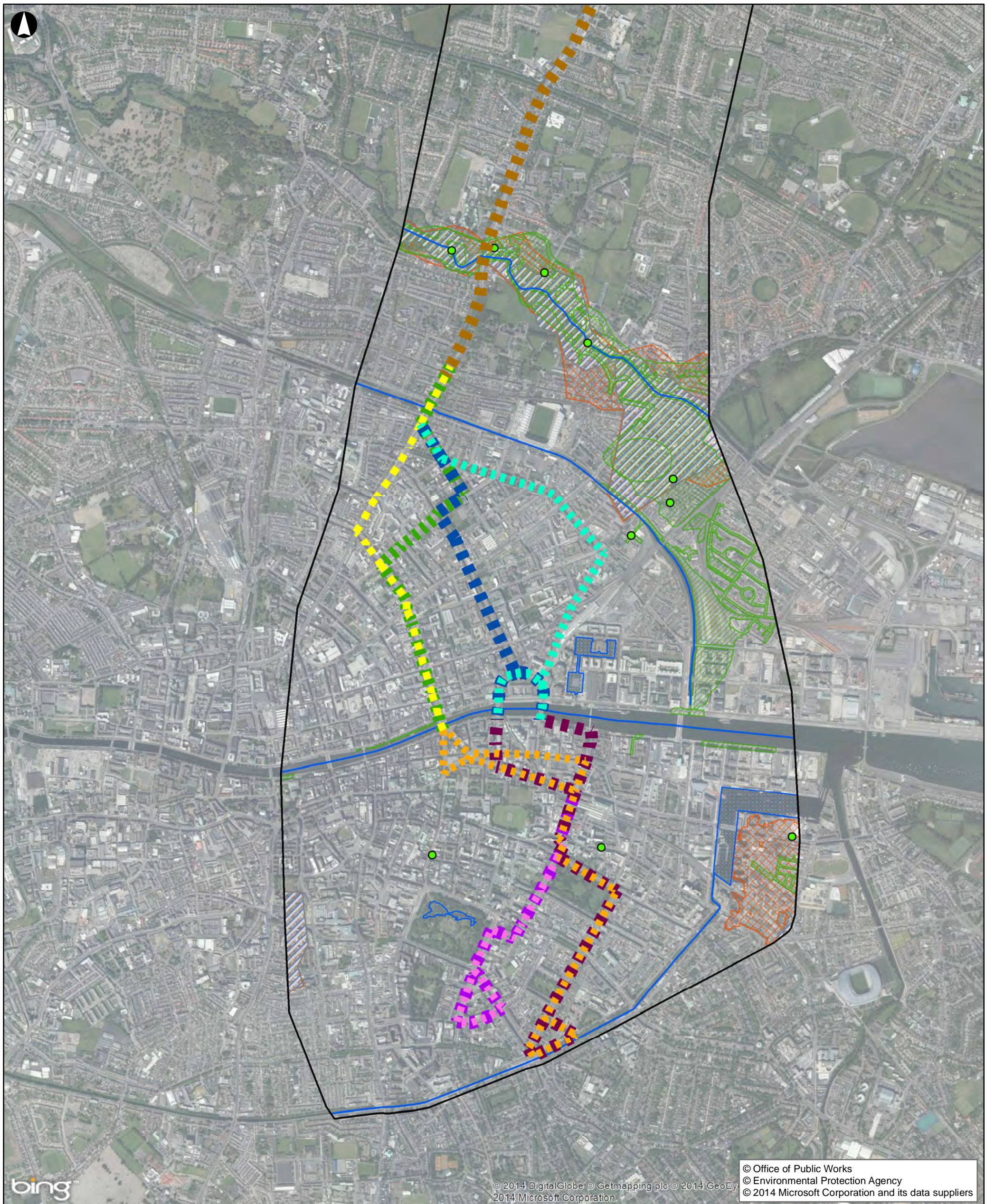
Client
National Transport Authority

Job Title
Swords / Airport to City Centre Swiftway

**Hydrology Study Area - Central
 Figure 5.4.2**

Not to scale

Job No 225244-10	Drawing Status Issue
----------------------------	--------------------------------



- Legend**
- OPW Flood Points Historical
 - Surface Water rpa
 - Surface Water
 - OPW Flood Extents Historical
 - OPW Flood Extents Fluvial Indicative 1PC AEP 100yr Event
 - OPW Flood Extents Fluvial Extreme Event
 - Approximate Study Area

- N1
- N2
- N3
- N4
- S1
- S2
- S3
- S4
- F1

P0	2014-10-08	CS	CC	EF
Issue	Date	By	Chkd	Appd

ARUP

Client
National Transport Authority

Job Title
Swords / Airport to City Centre Swiftway

Hydrology Study Area - South
Figure 5.4.3

Not to scale

Job No 225244-10	Drawing Status Issue
----------------------------	--------------------------------