

BUS CONNECTS

TRANSFORMING CITY BUS SERVICES



Project Ireland 2040
Building Ireland's Future



Údarás Náisiúnta Iompair
National Transport Authority

*Community Forum
for*

*Liffey Valley to City Centre
Core Bus Corridor*

*Wednesday, 2nd October
2019*



Introductions



TRANSFORMING CITY BUS SERVICES

CHAIRPERSON – Marie McLaughlin

JOHN FLEMING – BusConnects Infrastructure Director

CON KEHELY – Senior Project Manager – BusConnects

ALAN MCGINLEY – Project Coordinator – Jacobs

JAMES BURKE – Project Manager – Jacobs

ANDREW CRAVEN-WEBB - Public Realm - Jacobs

AGENDA



TRANSFORMING CITY BUS SERVICES

Introduction

Overview of BusConnects

Liffey Valley to City Centre Emerging Preferred Route

Discussion

Actions

BUS CONNECTS

TRANSFORMING CITY BUS SERVICES



Core Bus Corridors
providing continuous bus
priority



Redesign of
Network of Bus
Services



State-of-the-art
Ticketing System



Simpler Fare
Structure



Cashless Payment
System



Park & Ride
facilities



New Bus Livery



New Bus Stops
+ Shelters



Use of Low
Emission Vehicles

Recap of Actions from First Community Forum



- To refine the layouts for cycling at junctions along scheme.
- To review traffic movements.
- Review enforcement along the route.
- To review pedestrian arrangements.
- Consider back entrance parking.
- Review access to Ceannt Fort.
- Review access to National Children's Hospital.

All above actions for delivery as part of next design stage of project.

Submission Review



Consultation Submission Summary



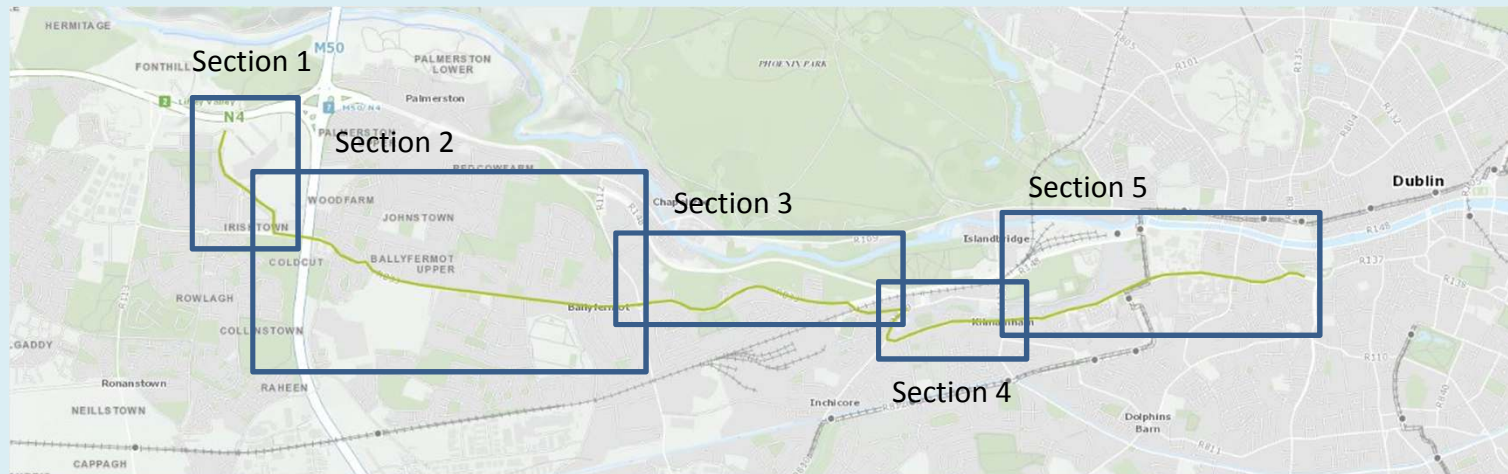
TRANSFORMING CITY BUS SERVICES

- Public consultation on the emerging preferred route for the Liffey Valley to City Centre Core Bus Corridor was carried out from the 23rd January to 13th April 2019
- A total of **130** submissions were received and logged for the scheme. Some of these had multiple signatures
- Submissions included petitions from Inchicore National School, Bulfin Estate Residents Association, CIE Residents Association & Brookfield Residents Association

Liffey Valley Route

**BUS
CONNECTS**

TRANSFORMING CITY BUS SERVICES



Section 1 – Liffey Valley to Coldcut Road

Section 2 – Coldcut Road to Le Fanu Road

Section 3 – Le Fanu Road to Inchicore Road

Section 4 – Inchicore Road to South Circular Road

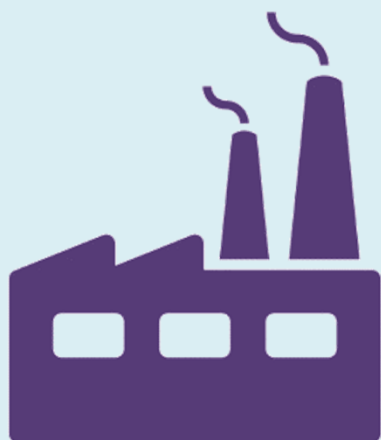
Section 5 – Kilmainham to Christ Church

Consultation Submission Summary



TRANSFORMING CITY BUS SERVICES

Who sent in Submissions?



Businesses
4%



Residents
78%

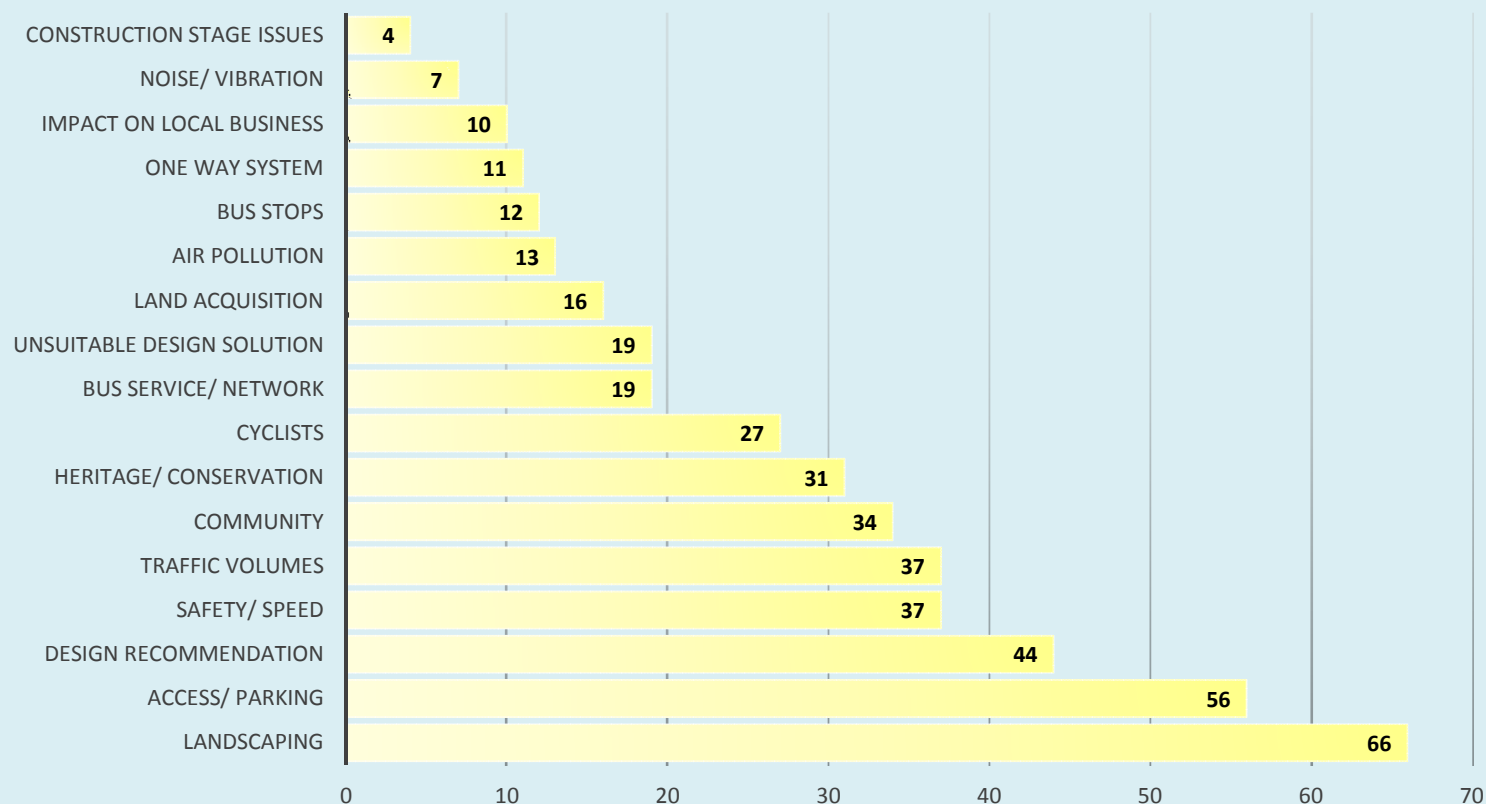
The remaining 18% of submissions were from elected members, public bodies and community groups

Consultation Submission Summary



TRANSFORMING CITY BUS SERVICES

What were the issues?

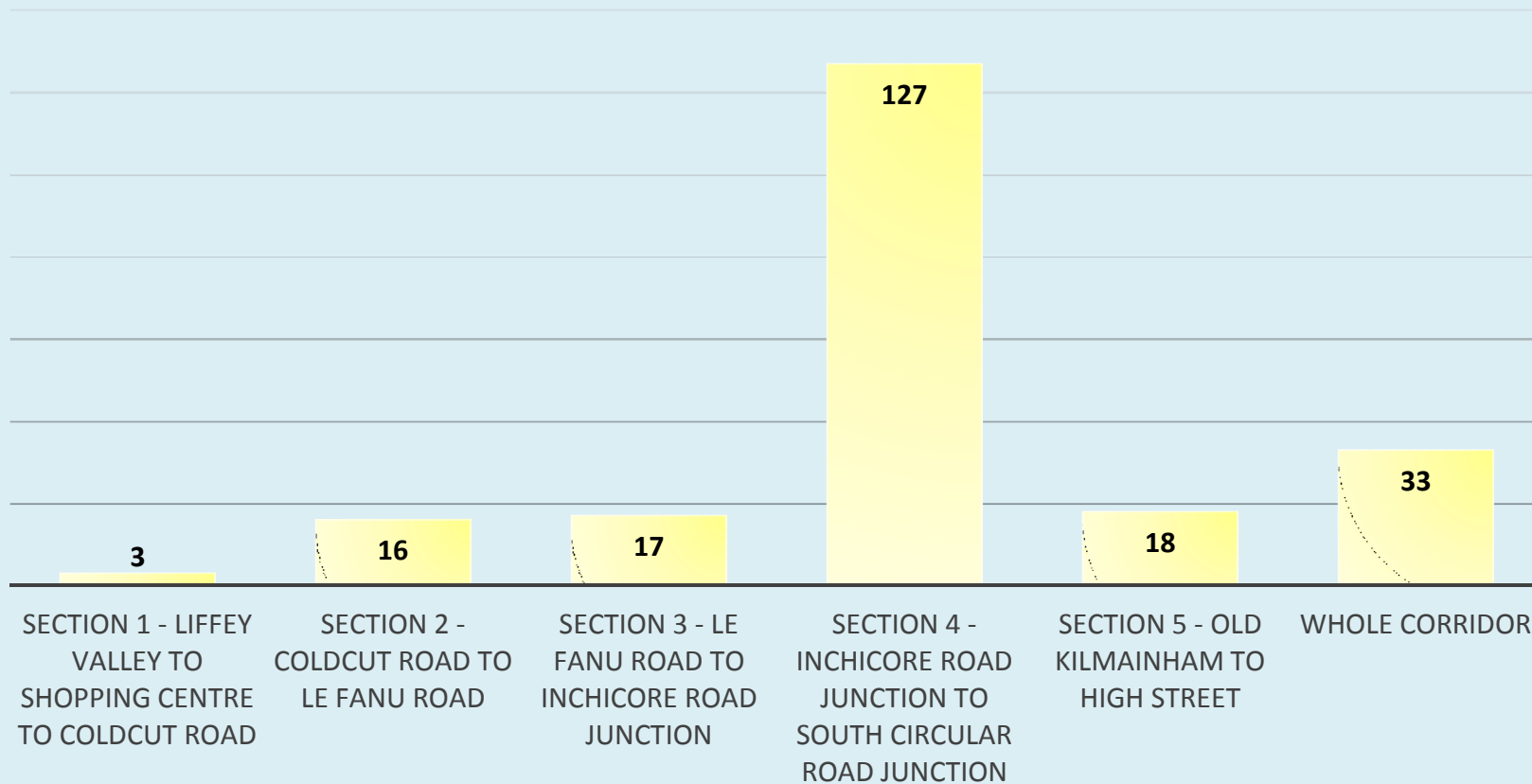


Consultation Submission Summary



TRANSFORMING CITY BUS SERVICES

Number of Submissions by Section



Number of Submissions

Consultation Submission Summary

Main Themes from Consultation Submissions	
Trees and Landscaping	Traffic Volumes
Community	Land Acquisition
Access & Parking	Cycling Provision
Safety & Speed	Air Pollution
Bus Stops and Bus Service	Heritage & Conservation
Impact on Local Businesses	Noise & Vibration
One-Way System	Construction Issues

Review of Route Proposals



Amendments being Considered.

Ballyfermot – Access Roads

**BUS
CONNECTS**

TRANSFORMING CITY BUS SERVICES



Potential Parallel parking



Amendments being Considered.

Ballyfermot – Access Roads

**BUS
CONNECTS**

TRANSFORMING CITY BUS SERVICES

Potential Extended driveways



Amendments being Considered.

Ballyfermot – Public Realm Improvements

**BUS
CONNECTS**

TRANSFORMING CITY BUS SERVICES



Amendments being Considered.

Kylemore Road

**BUS
CONNECTS**

TRANSFORMING CITY BUS SERVICES



- Additional drop off parking
- Cycle track in both directions
- Public realm improvements



Amendments being Considered.

**BUS
CONNECTS**

TRANSFORMING CITY BUS SERVICES



Improved cycling provision at junctions



Amendments being Considered.

**BUS
CONNECTS**

TRANSFORMING CITY BUS SERVICES

Markiewicz Park – plan view

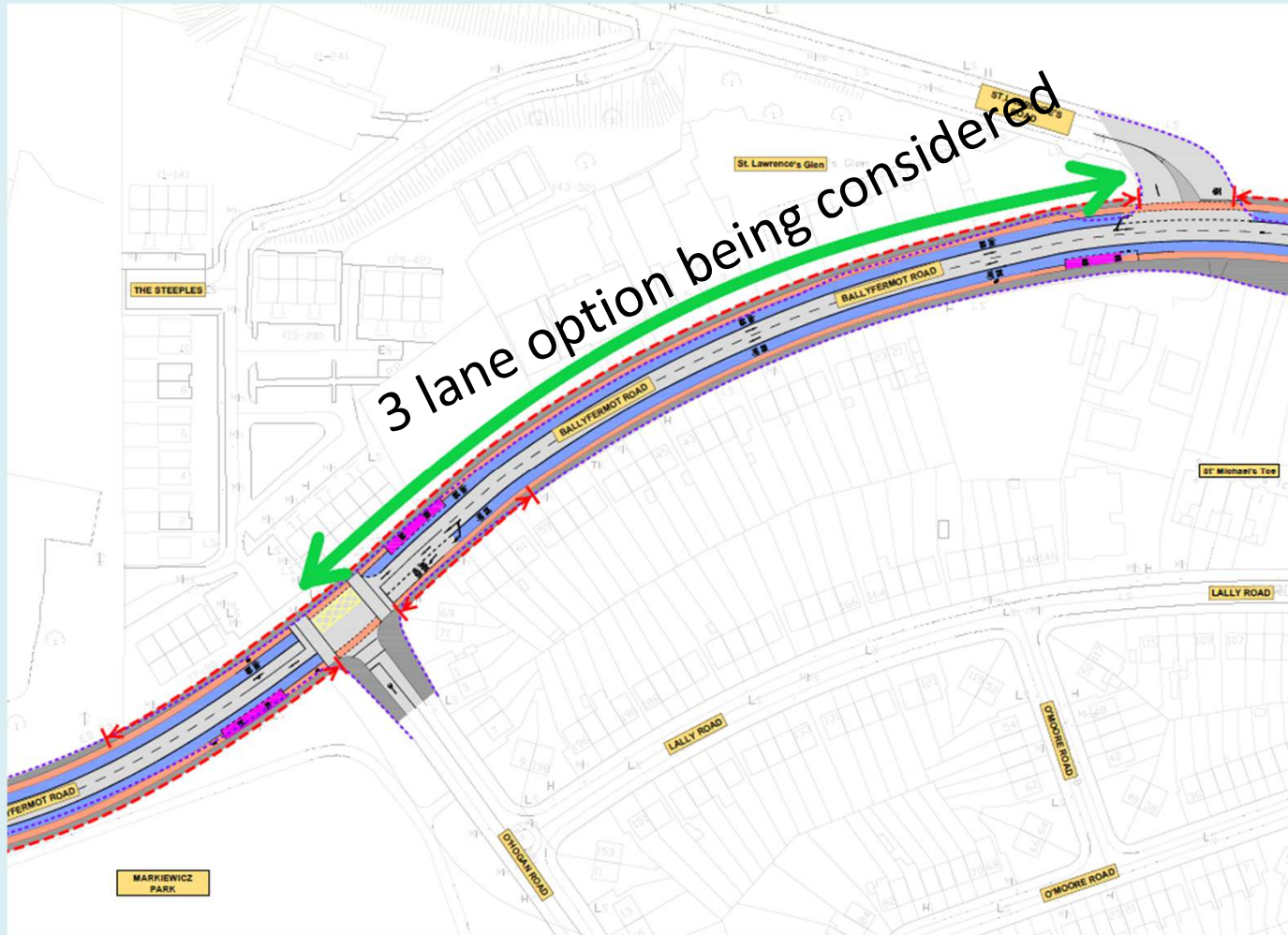


Amendments being Considered.

**BUS
CONNECTS**

TRANSFORMING CITY BUS SERVICES

Markiewicz Park to St Laurence's Road

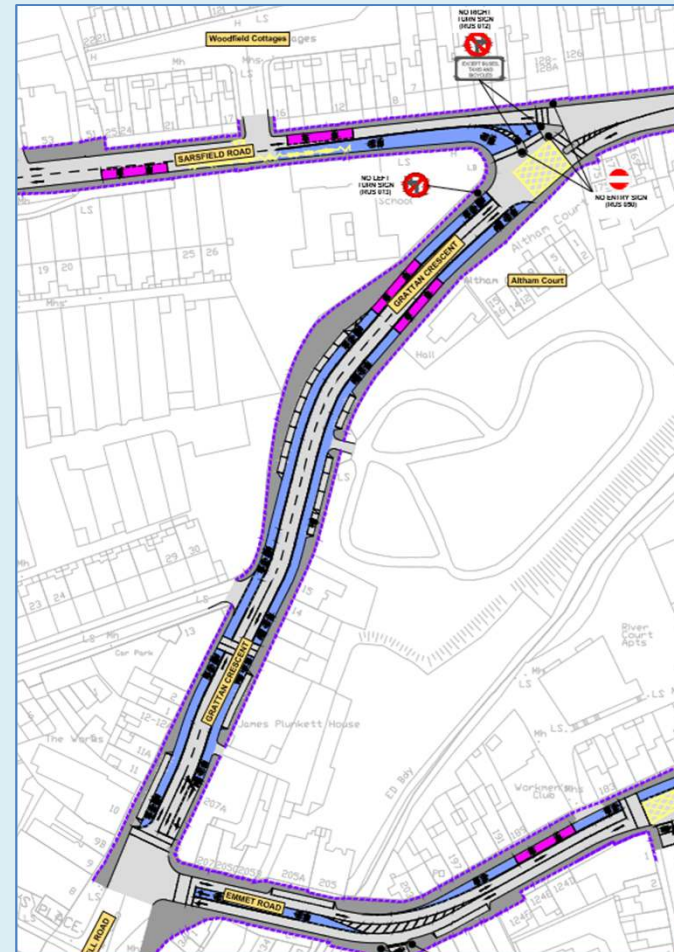


Amendments being Considered.

Grattan Crescent

Previous proposal

- 2-way traffic and bus lanes
- Removal of some trees
- Concern raised over tree loss and village impact



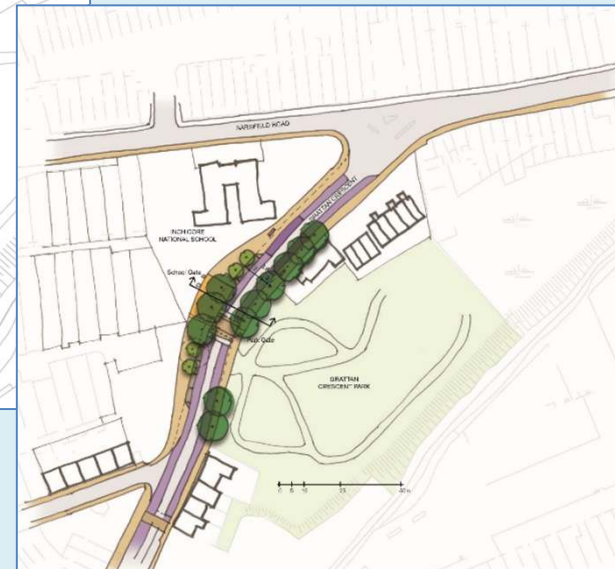
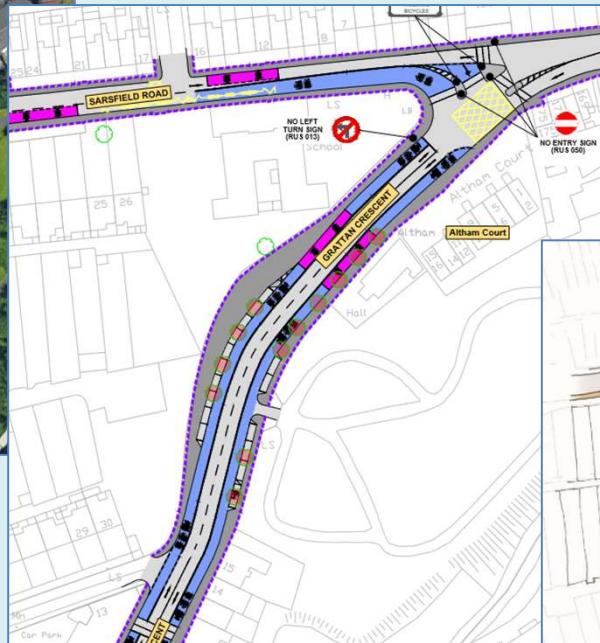
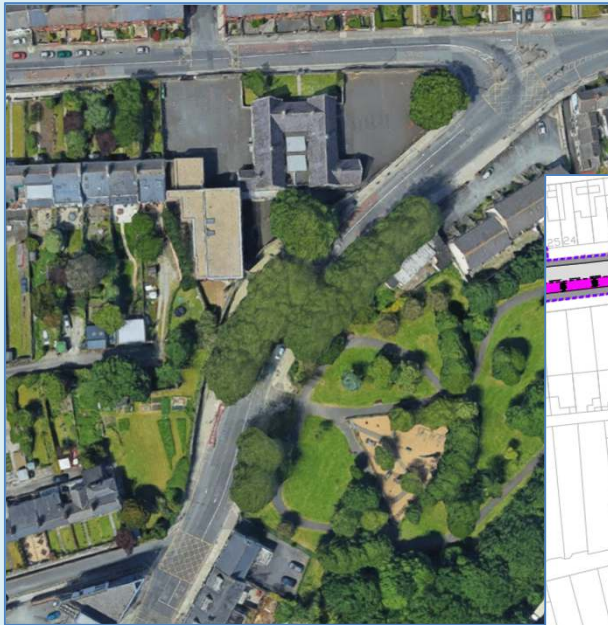
Amendments being Considered.

Grattan Crescent

**BUS
CONNECTS**

TRANSFORMING CITY BUS SERVICES

Design progressing



Amendments being Considered.

Grattan Crescent

**BUS
CONNECTS**

TRANSFORMING CITY BUS SERVICES

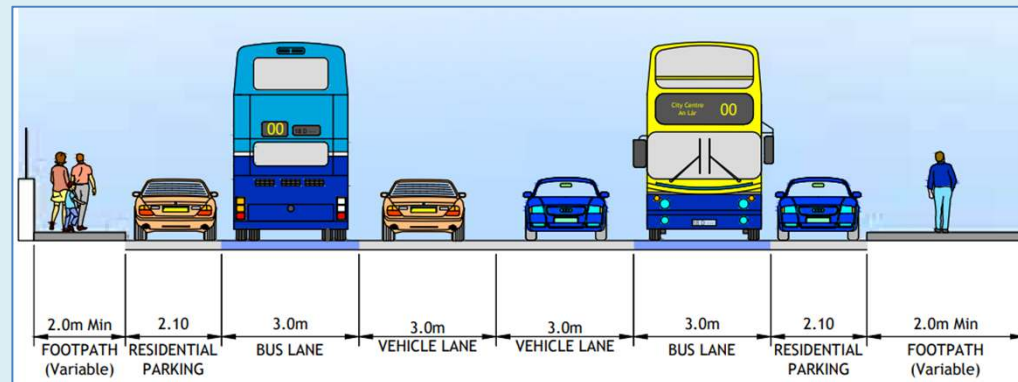


Amendments being Considered.

Grattan Crescent

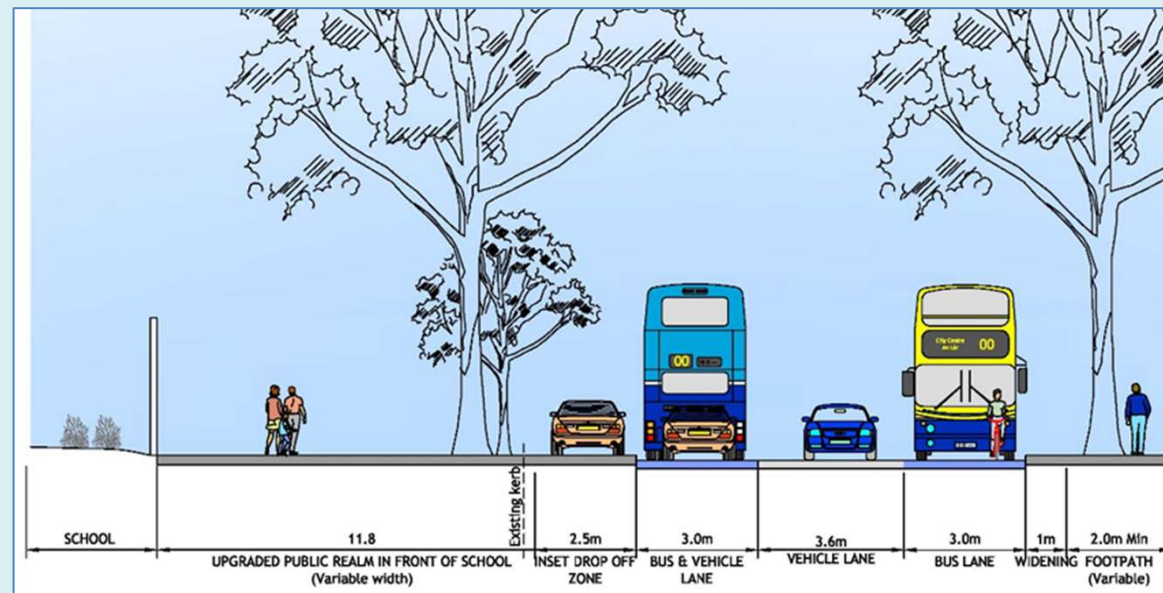
Original Concept

- Removal of some Trees
- Some Parking on both sides
- 4 lane cross-section



Proposed Layout

- Retains trees
- Parking outside park
- One South bound general traffic lane
- New crossing at School



Amendments being Considered.

Grattan Crescent

**BUS
CONNECTS**

TRANSFORMING CITY BUS SERVICES



Amendments being Considered.

Grattan Crescent

**BUS
CONNECTS**

TRANSFORMING CITY BUS SERVICES



Amendments being Considered.

Grattan Crescent

**BUS
CONNECTS**

TRANSFORMING CITY BUS SERVICES



Amendments being Considered.

Grattan Crescent

**BUS
CONNECTS**

TRANSFORMING CITY BUS SERVICES



General items under consideration



TRANSFORMING CITY BUS SERVICES

Cycle Routes

Traffic Arrangements

Bus Priority Arrangements

Pedestrian Facilities

Urban Realm Improvements

Video - Bus Priority Signal operation showing bus priority in a single direction

**BUS
CONNECTS**

TRANSFORMING CITY BUS SERVICES



Discussion

