

BusConnects  
Infrastructure Dublin

Core Bus Corridors Preferred Route Options

**Ringsend to City Centre**

Third Public Consultation – Community Forum

Wednesday 2<sup>nd</sup> December 2020



Project Ireland 2040  
Building Ireland's Future



**BUS  
CONNECTS**  
SUSTAINABLE TRANSPORT FOR A BETTER CITY.



# Agenda

- Introduction to Community Forum Panel
- Presentation on the Ringsend to City Centre Core Bus Corridor
- Q & A

If you wish to ask a question to the NTA panel, please type your **Name** and your **Organisation** into the 'Chat' box.

When you are called upon sequentially by the Independent Chairperson to ask your question, the Webinar host will UNMUTE your microphone and you will receive a 'prompt' or 'notification' to your screen to unmute. You can then proceed to ask your question.

Please keep your question concise so that we can take questions from all the community groups/organisations on the webinar.



# Community Forum Panel

Independent Chair: Marie McLaughlin

- Hugh Creegan – Deputy CEO (NTA)
- John Fleming – Project Director (NTA)
- Aidan Gallagher – Senior Project Manager (NTA)
- Seamus Mac Gearailt – Design Coordinator
- Eoin Ó Catháin – Design Manager

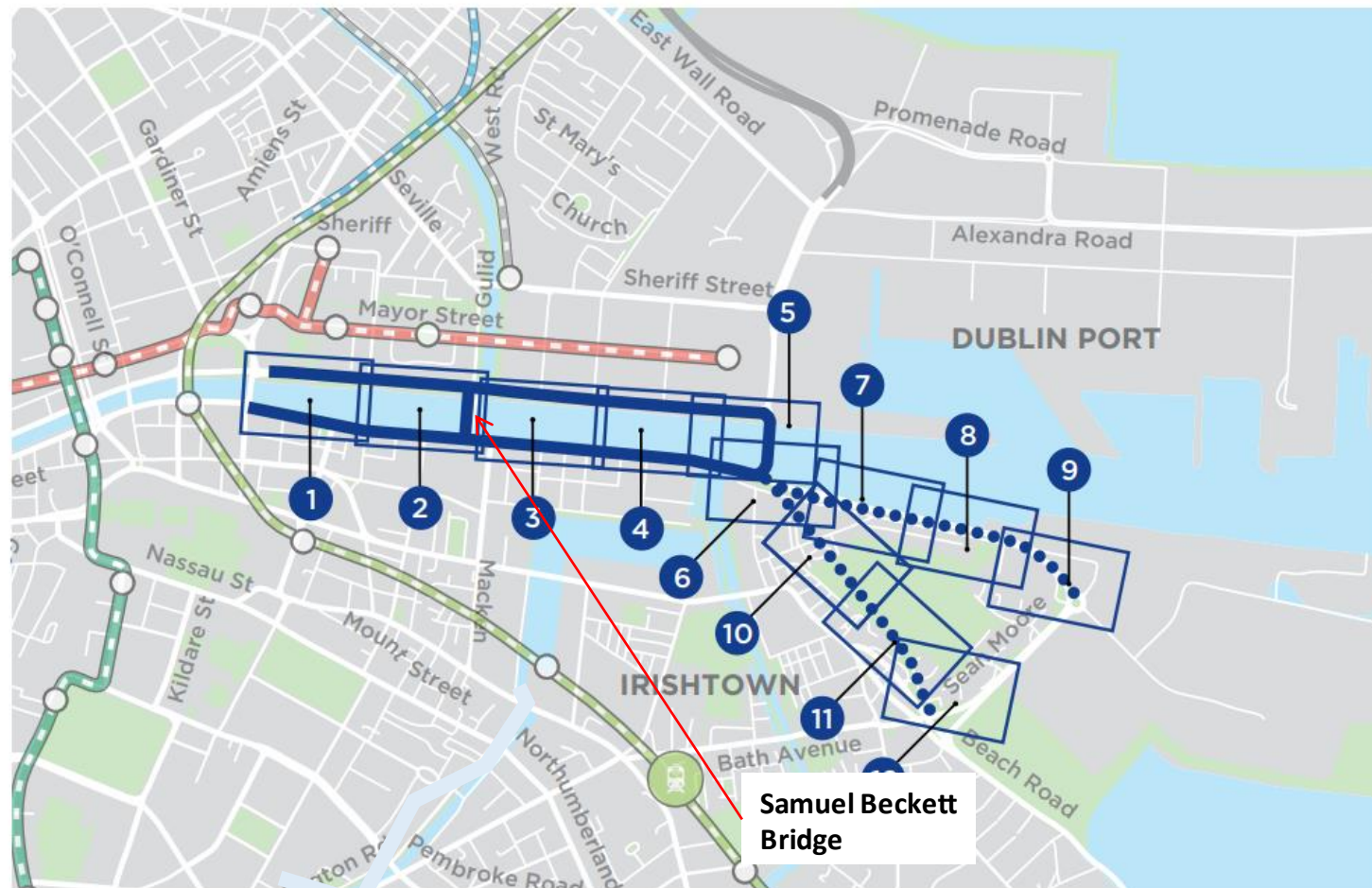


# Ringsend to City Centre Corridor

## Changes for Public Consultation No.3

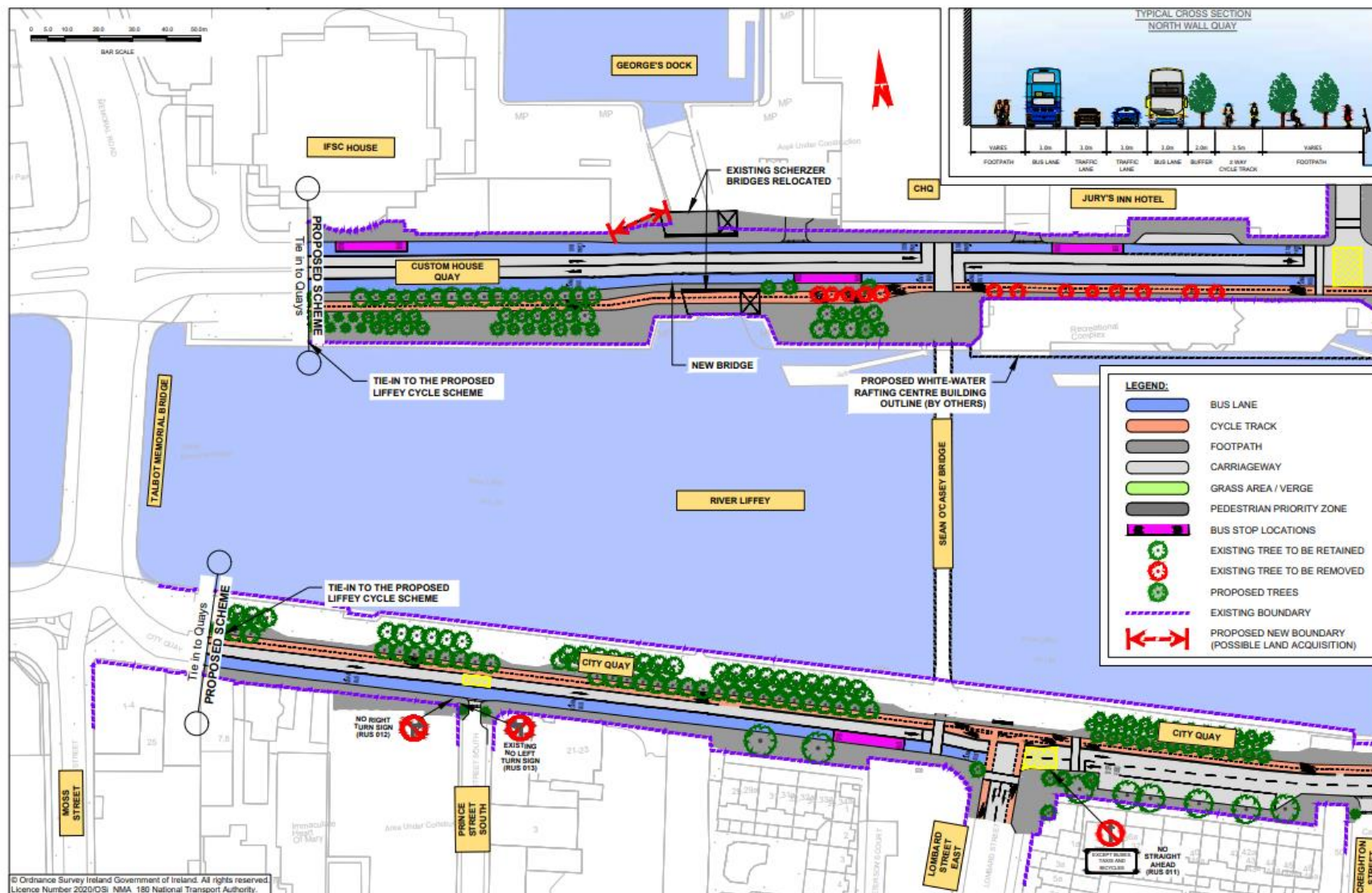
Index Map

BusConnects Core Bus Corridors / 16: Ringsend > City Centre





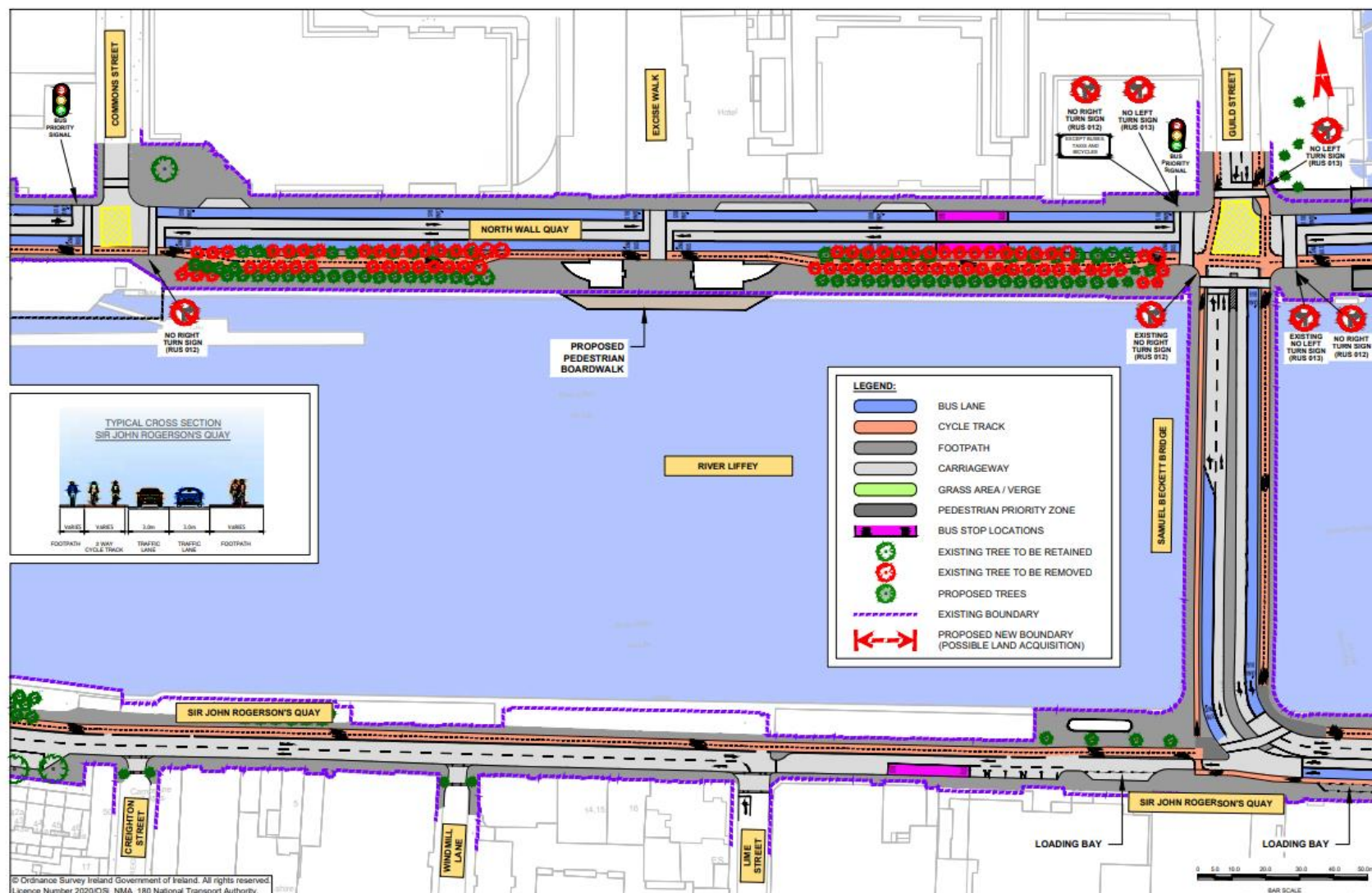
## BusConnects Core Bus Corridors / 16: Ringsend > City Centre

















**TYPICAL CROSS SECTION  
SIR JOHN ROGERSON'S QUAY**

Width	Description
VARIABLE	FOOTPATH
7.0m	7M CYCLE TRACK
3.0m	BUS LANE
3.0m	BUS LANE
VARIABLE	FOOTPATH

**LEGEND:**

- BUS LANE
- CYCLE TRACK
- FOOTPATH
- CARRIAGEWAY
- GRASS AREA / VERGE
- PEDESTRIAN PRIORITY ZONE
- BUS STOP LOCATIONS
- EXISTING TREE TO BE RETAINED
- EXISTING TREE TO BE REMOVED
- PROPOSED TREES
- EXISTING BOUNDARY
- PROPOSED NEW BOUNDARY (POSSIBLE LAND ACQUISITION)

**RIVER LIFFEY**

**PROPOSED SOUTH CAMPSHIRE SCHEME BY OTHERS**

**PROPOSED NORTH CAMPSHIRE SCHEME BY OTHERS**

**PROPOSED PEDESTRIAN / CYCLE BRIDGE BY OTHERS**

**SIR JOHN ROGERSON'S QUAY**

**DIVING BELL**

**EXISTING NO RIGHT TURN SIGN (RUS 912)**

**EXISTING NO LEFT TURN SIGN (RUS 913)**

**NO LEFT TURN SIGN (RUS 913)**

**NO STRAIGHT AHEAD (RUS 911)**

**ASGARD ROAD**

**BLUDD STONEY ROAD**

**FORBES STREET**

**ADMIRAL BROWN WALK**

**CARDIFF LANE**

**EXISTING NO RIGHT TURN SIGN (RUS 912)**

**EXISTING NO LEFT TURN SIGN (RUS 913)**

**SCALE**

0 5.0 10.0 20.0 30.0 40.0 50.0m

© Ordnance Survey Ireland Government of Ireland. All rights reserved.  
Licence Number 2020/OIS NMA 180 National Transport Authority.

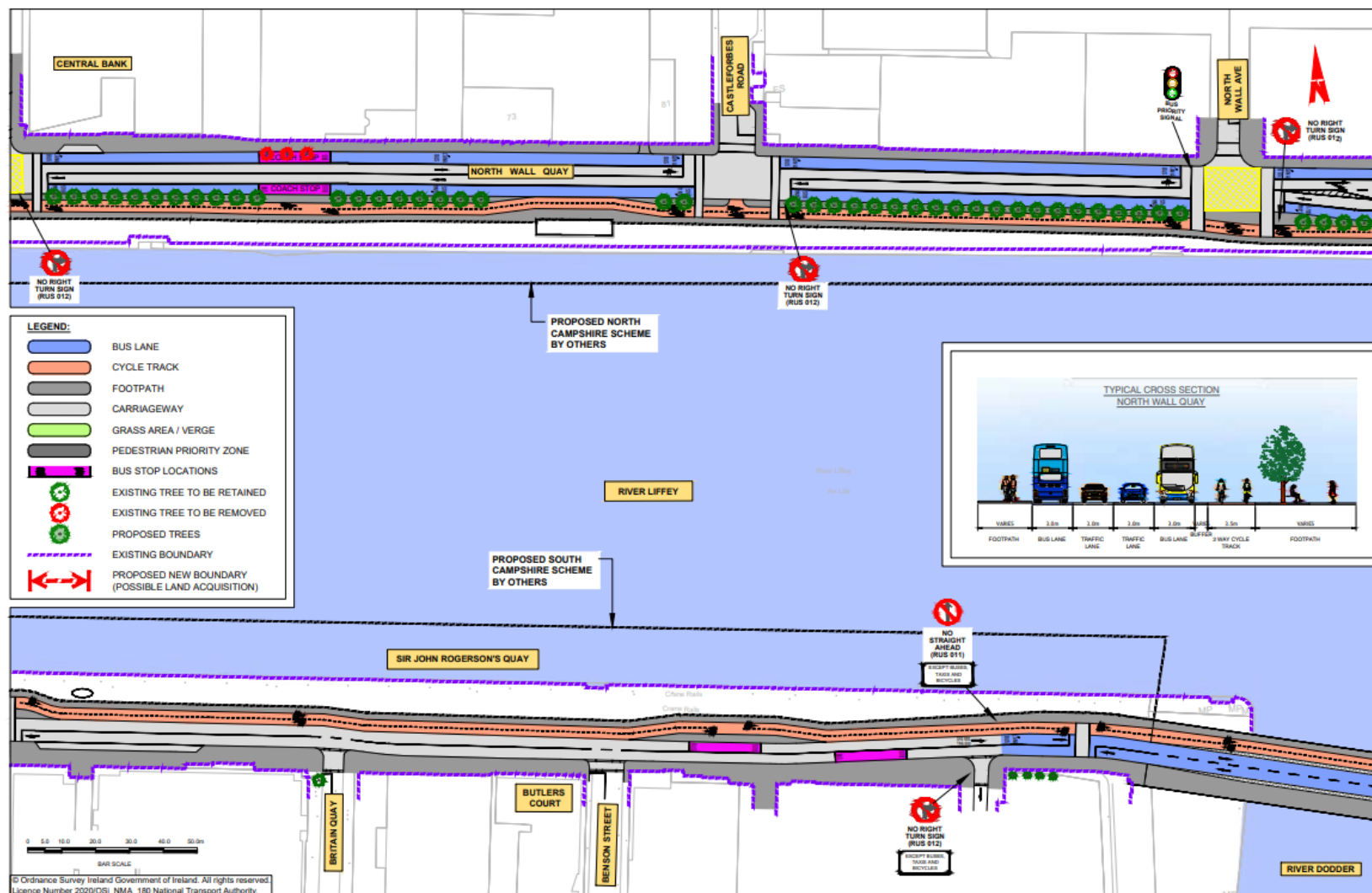






## BusConnects Core Bus Corridors / 16: Ringsend > City Centre

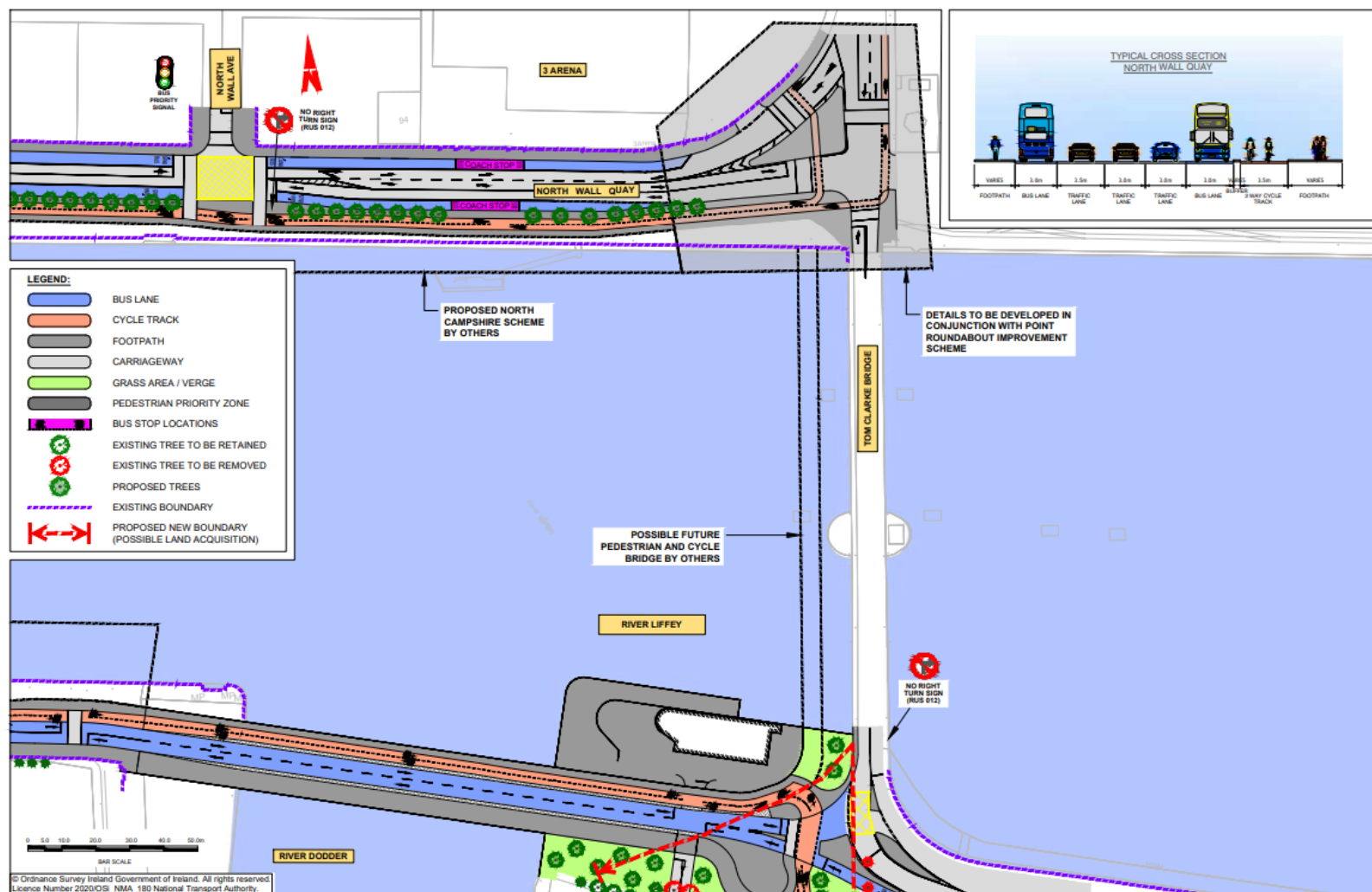
### MAP 4: Preferred Route



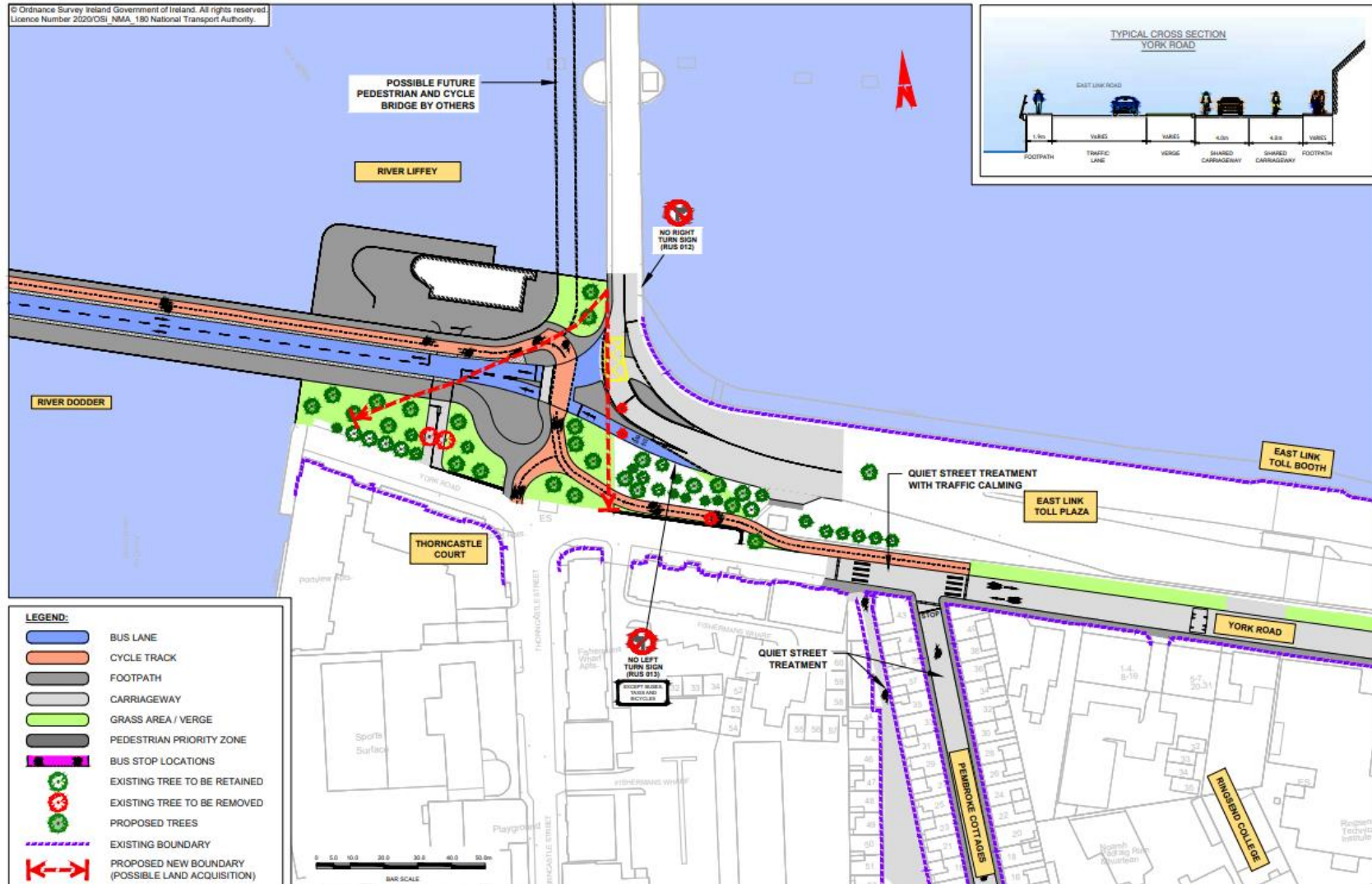


### MAP 5: Preferred Route

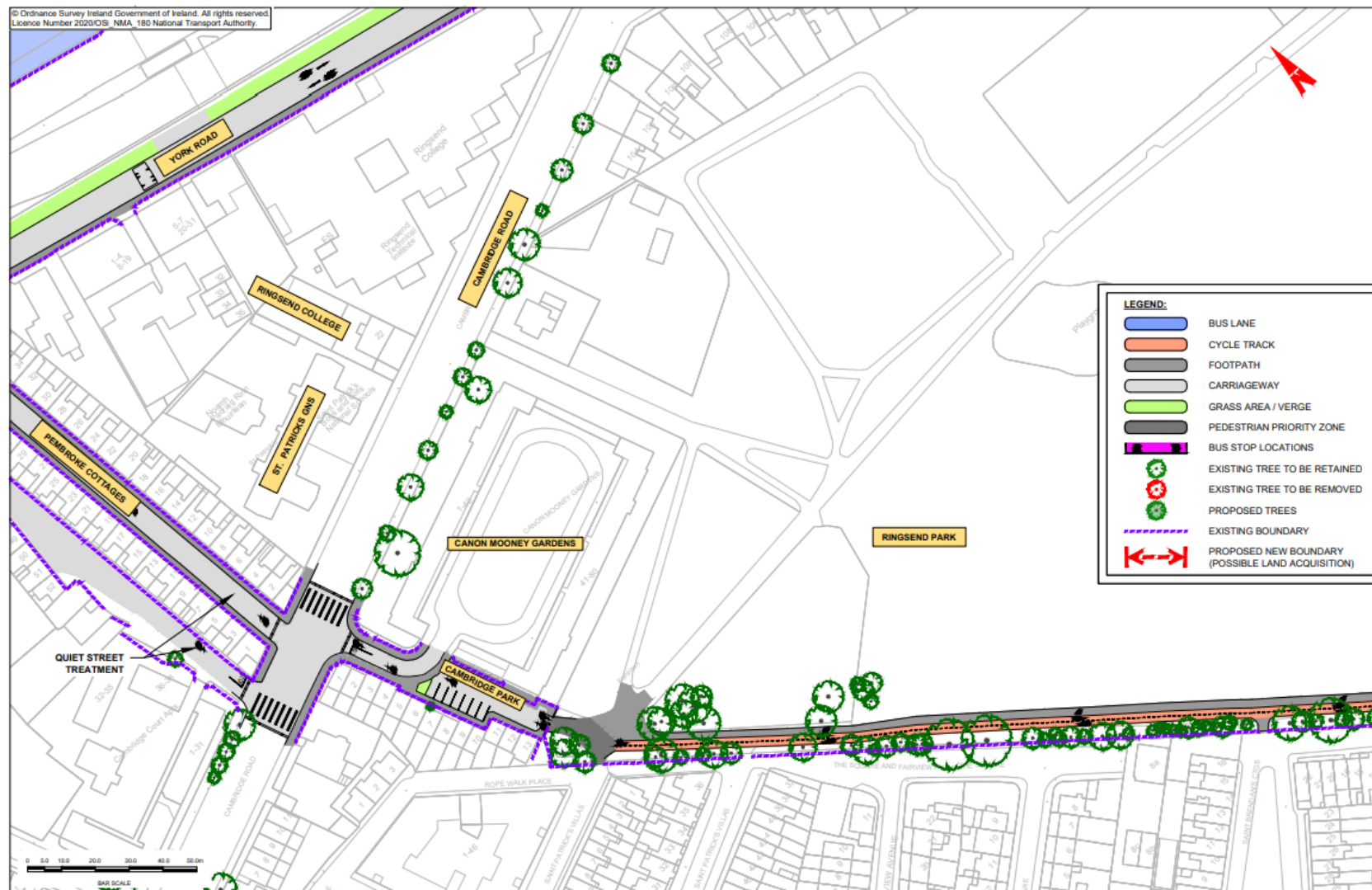
**BusConnects Core Bus Corridors / 16: Ringsend > City Centre**



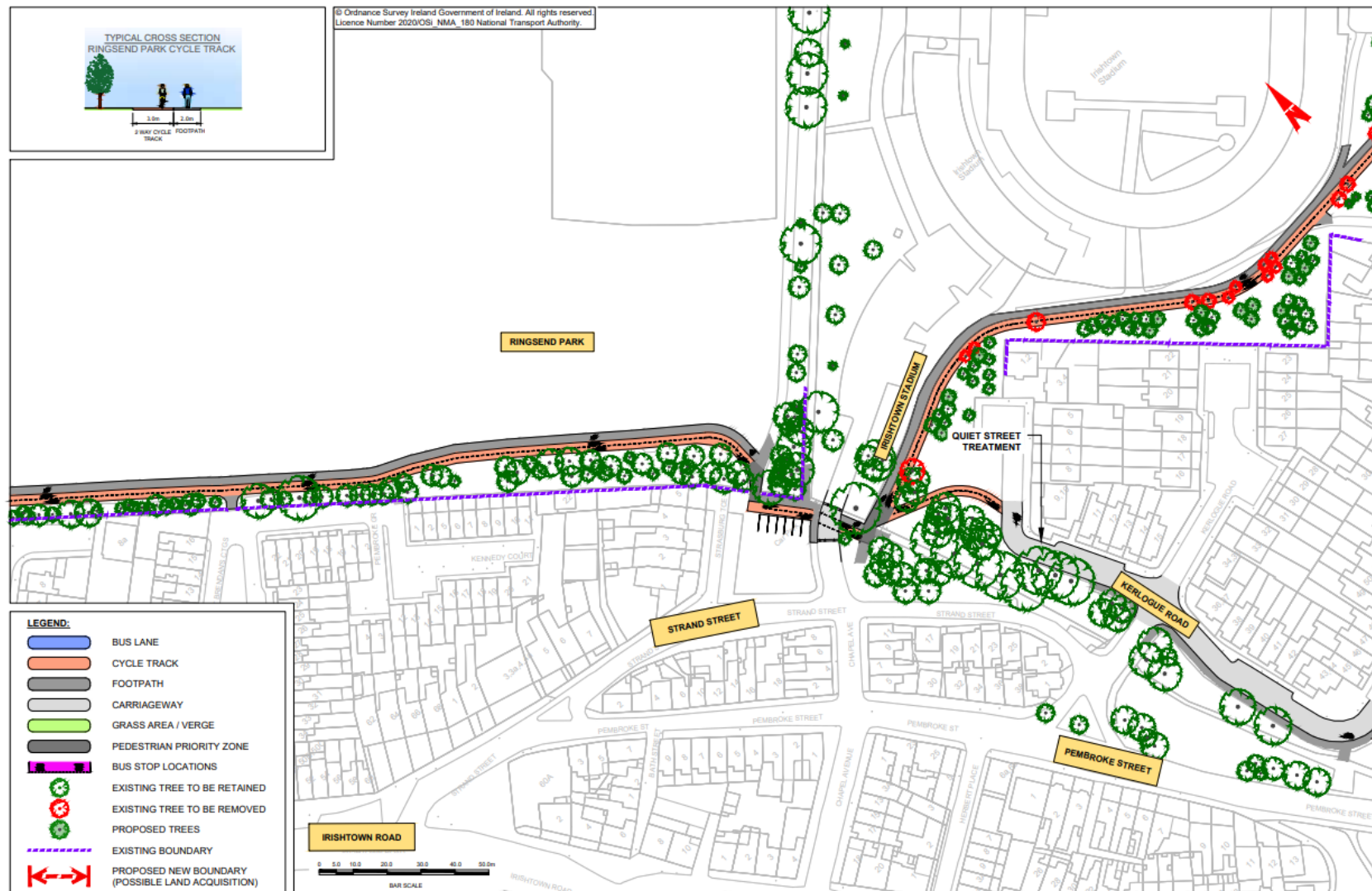














**BusConnects Core Bus Corridors / 16: Ringsend > City Centre**

### MAP 12: Preferred Route









# How to Engage?



# How to Engage?

- Consultation on the proposals runs until **16 December**.
- Virtual consultation rooms for each Core Bus Corridor can be found on [www.busconnects.ie](http://www.busconnects.ie).
- Submissions and observations may be made by:
  - **Email** - [cbc@busconnects.ie](mailto:cbc@busconnects.ie)
  - **Post** - Core Bus Corridor Project, National Transport Authority, Dún Scéine, Harcourt Lane, Dublin 2, D02 WT20.



# Questions and Answers

If you wish to ask a question to the NTA panel, please type your Name and your Organisation into the 'Chat' box.

When you are called upon sequentially by the Independent Chairperson to ask your question, the Webinar host will UNMUTE your microphone and you will receive a 'prompt' or 'notification' to your screen to unmute. You can then proceed to ask your question.

Please keep your question concise so that we can take questions from all the community groups/organisations on the webinar.



# How to Engage?

- Consultation on the proposals runs until **16 December**.
- Virtual consultation rooms for each Core Bus Corridor can be found on [www.busconnects.ie](http://www.busconnects.ie).
- Submissions and observations may be made by:
  - **Email** - [cbc@busconnects.ie](mailto:cbc@busconnects.ie)
  - **Post** - Core Bus Corridor Project, National Transport Authority, Dún Scéine, Harcourt Lane, Dublin 2, D02 WT20.