

# BUS CONNECTS CORK

## BusConnects Cork Sustainable Transport Corridors Report



**This is Easy to Read information**

**April 2022**

# What is this Report about?



BusConnects is a plan to change the bus services in cities in Ireland.



The National Transport Authority, or NTA, looks after public transport in Ireland.

The NTA is managing BusConnects.



The NTA is working with Cork City Council and Cork County Council on BusConnects Cork.

This Report gives you up to date information on BusConnects Cork.



This Report will tell you about the work so far on sustainable transport corridors in Cork.

Sustainable means green and good for the environment.

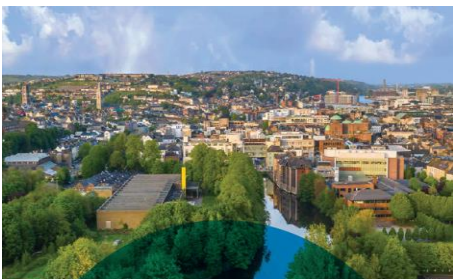
# Cork in the future



Cork City and the areas around it are changing.



There are new opportunities for jobs, communities, and visitors.



There are new ways to be green in Cork.

Being green means looking after the environment.



There are new projects to look after the history of Cork City.

# Cork in the future



More people will live and work in Cork over the next 20 years.



A good transport system in the City, the areas around the city, and in county towns will be very important.



It will help Cork to be a strong European city.



It will help make Cork a good place to live, work, visit, and have fun.



# Cork Metropolitan Area Transport Strategy



The Cork Metropolitan Area Transport Strategy is known as the CMATS for short.



The NTA worked on the CMATS with Cork City Council, Cork County Council, Irish Rail, and Transport Infrastructure Ireland.



The CMATS will give a joined-up transport system that everyone can use.

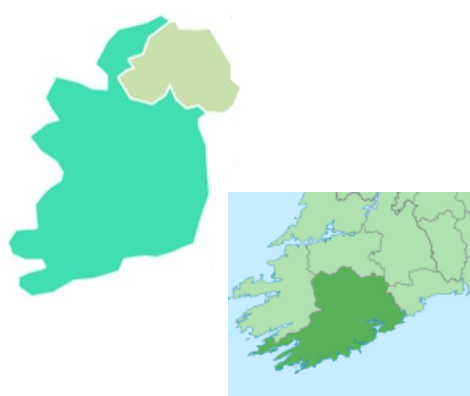
There will be new roads and places to park and ride.



The CMATS is about having a city that is good to live in and travel around.

There will be new bus, rail, and Luas services and better ways to walk and cycle.

# Cork Metropolitan Area Transport Strategy



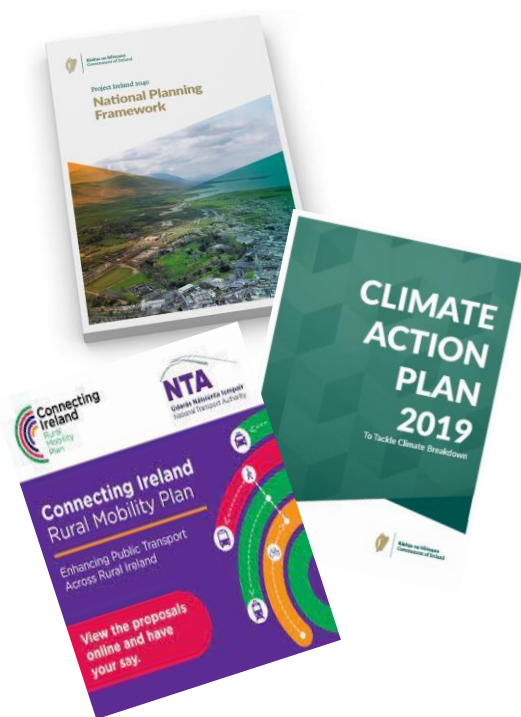
There are other plans for Ireland and for Cork.



The CMATS will work with these plans.

For example:

- National Development Plan 2021-2030
- Climate Action Plan 2021
- National Planning Framework 2040
- National Sustainable Mobility Plan
- Connecting Ireland.



# Why do we need BusConnects Cork?



BusConnects Cork is part of the CMATS.

The bus system is a very important part of public transport in Cork.



BusConnects Cork will help make the bus service faster and easier to use.



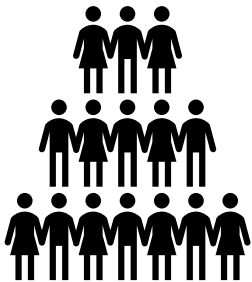
It will be easier to get to places and to visit family and friends.



BusConnects Cork will help make it easier for people to walk and cycle safely.

For example, new cycle lanes, footpaths, and crossings.

# Why do we need BusConnects Cork?



There are more and more people in Cork.



Too many people are using their cars.

Heavy traffic means it can take a long time to get to places in a car or on public transport.



BusConnects Cork will be better for the environment.



We need to help the environment and make sure the city still looks well.



# Why do we need BusConnects Cork?



People want to use the bus more to get to school, college, work, or leisure places.



We want to make it easier for everyone to use the bus.

Good public transport will allow people of all ages and abilities to take part in society.



BusConnects will help make Cork one of the best connected cities in Ireland.



This will bring money, new business, and new workers to Cork.

# What will BusConnects Cork do?

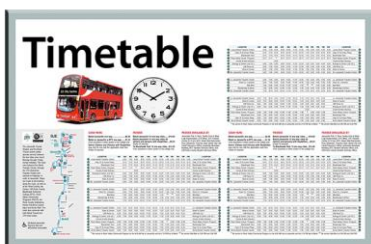


There are 9 parts to BusConnects Cork.

Work has already started on some parts of the plan.



1. New bus and cycle lanes



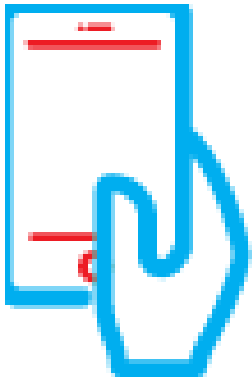
2. A network redesign

The network is the routes and timetables that buses follow

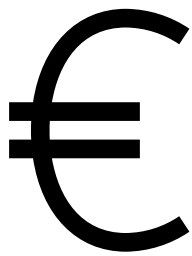
A redesign is a change to make the network better



3. A new ticket system



4. Ways to pay for your ticket without using cash



5. New bus fares, for example - a new fare where you pay once and can travel on different types of transport in 90 minutes



6. New buses



7. New bus stops with better signs and information



8. Buses that are better for the environment – moving from diesel to electric buses



9. Park and Ride spaces – this is where you can park your car and finish your journey into the city on a bus.

# Sustainable transport corridors for Cork



Sustainable transport corridors are an important part of BusConnects Cork.



Sustainable transport corridors make it easier and safer for buses, cyclists, and people walking.



A sustainable transport corridor is a lane that buses can travel in.

These lanes will help buses avoid traffic and get to places faster and on time.



There will be a cycle lane on each sustainable transport corridor.

Cycle lanes can help keep cyclists away from cars, buses, and trucks.



# Sustainable transport corridors for Cork



There are only 14 kilometres of bus corridors in Cork at the moment.

We need 75 kilometres of new bus lanes.



We have a plan for 12 sustainable transport corridors.

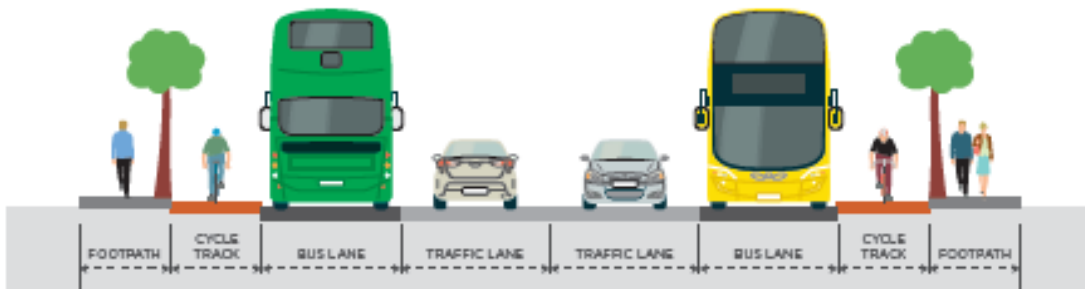
You can see the plans and maps for these on our website.

# What is a Sustainable transport corridor?



We will need to make some changes to the roads for the sustainable transport corridors.

This picture shows what a road would look like with a sustainable transport corridor.



# The 12 Sustainable transport corridors for Cork

1. Dunkettle to City

2. Mayfield to City

3. Blackpool to City

4. Hollyhill to City

5. Ballincollig to City

6. Bishopstown to City

7. Togher to City

8. Airport Road to City

9. Maryborough Hill to City

10. Mahon to City

11. Kinsale Road to Douglas

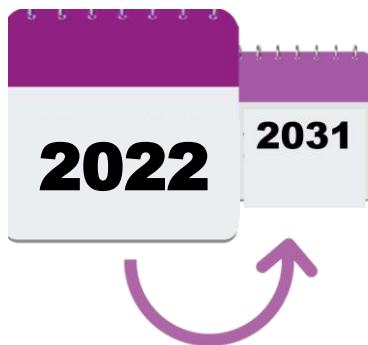
12. Sunday's Well to Hollyhill



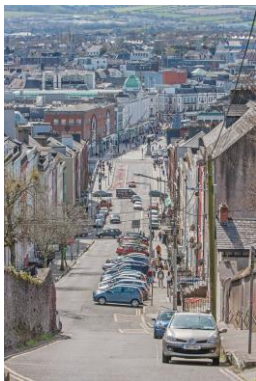
# Managing the challenges



There are hard decisions and big changes to make if sustainable transport corridors are going to work.



We need to make changes so we have a transport system that works now and in the future.



Cork is a city with many older parts.

There are small, narrow streets and hills.



There will be changes to how the traffic moves around the streets.

For example, some roads may become one-way or bus-only.

# Managing the challenges



There is very little space on some busy roads.  
We will have to make the roads wider so there is room for bus and cycle lanes.



This means taking some land from gardens, driveways, and businesses.  
We will talk to the people that own the land.



We will need to take away some parking spaces on the streets on some of the routes.



We do not know yet how many parking spaces will go.



# Managing the challenges



We will need to take down trees along some of the sustainable transport corridors.

We will try to keep as many mature trees as we can.



We will have a tree replanting programme.

This means we will try to plant more trees as close as possible to the ones we took down.



There will be roadworks.

This means some noise, dust, and changes to how traffic moves.



We will think carefully about the people living and working nearby when we have building sites and roadworks.

# Managing the challenges



We will try to improve areas along busy corridors.

We will give money to make local areas look nicer.



We will set up community forums so we can talk to people about the sustainable transport corridors.

# More information



You can go to our website to get more information, check out routes that are important to you, and look at the maps.

<https://busconnects.ie/cork/>



This Report was put together by the National Transport Authority.



ACE Communication helped with this Easy to Read Report.

Experts by Experience helped put this information together.



**Project Ireland 2040**  
Building Ireland's Future

