



Mayfield to City

Sustainable Transport Corridor
Emerging Preferred Route

Public Consultation June 2022



**BUS
CONNECTS
CORK**
SUSTAINABLE TRANSPORT FOR A BETTER CITY.



Rialtas
na hÉireann
Government
of Ireland

Tionscadal Éireann
Project Ireland
2040



Contents

1. Introduction	4
1.1 Investing in Cork's Future: Cork Metropolitan Area Transport Strategy (CMATS) - Reimagining Public Transport in Cork	4
1.2 What is BusConnects Cork?	6
1.3 What is the Sustainable Transport Corridor Project?	9
1.4 Potential Road Layout	10
1.5 What are the benefits of the Sustainable Transport Corridor Project?	10
1.6 Emerging Preferred Routes	12
2. Emerging Preferred Routes	14
2.1 Emerging preferred route for Mayfield to City	14
2.2 Mayfield to City Overview	14
2.3 Key Facts	19
2.4 Understanding the terminology	20
3. Understanding Potential Challenges and Ways to Mitigate	22
3.1 Overview	22
3.2 Challenges and how we will mitigate to address them	23
4. The Process for the Acquisition of Land	26
4.1 How the Project will progress through public consultations until Formal Planning	28
5. How to take part in the public consultation and have your say	30
5.1 If a property owner has land that may be impacted	30
5.2 General queries	30
5.3 How to send a submission	30
6. Appendices	32
Index Map	33
Route Maps	34

1. Introduction

1.1 Investing in Cork's Future: Cork Metropolitan Area Transport Strategy (CMATS) - Reimagining Public Transport in Cork

The National Transport Authority (NTA) is committed to enabling Cork's growth potential and supporting its future development. That's why the NTA has been working in partnership with Cork City Council, Cork County Council, Irish Rail, Bus Éireann and Transport Infrastructure Ireland, to develop, and now implement the Cork Metropolitan Area Transport Strategy (CMATS).

Adopted in 2020, CMATS will deliver an accessible, integrated transport network that enables the sustainable growth of the Cork Metropolitan Area as a dynamic, connected, and internationally competitive European city region.

CMATS is about creating a liveable city and connected communities by giving everybody the opportunity to access sustainable public

transport options, along with radically improved cycling and walking infrastructure.

Putting transport at the heart of the vision for Cork

CMATS sets out an ambitious vision to deliver an accessible, integrated transport network that enables the sustainable growth of the Cork Metropolitan Area as a dynamic, connected, and internationally competitive European city region.

The implementation of CMATS is aligned with a broad national policy framework, supporting regional development, economic growth, climate action and investment in sustainable transport. This framework includes:

- National Development Plan 2021-2030
- Climate Action Plan 2021
- National Planning Framework 2040
- National Sustainable Mobility Policy

Cork Metropolitan Area Transport Strategy (CMATS) means:

A multi-billion Euro investment in transport for the Cork Metropolitan Area over the next two decades delivering;

- A transformed bus system - BusConnects Cork;
- An enhanced commuter rail system - Cork Commuter Rail Programme;
- A new east-west light rail line - Luas Cork;
- A comprehensive cycling network providing safe cycling facilities across the region;
- Various new road links and road improvements plus park & ride provision; and
- Enhanced pedestrian facilities.

CMATS will result in more than half of all journeys in the morning peak being made by public transport, cycling and walking when the Strategy is delivered compared to just 26% at present.



1.2 What is BusConnects Cork?

To help Cork city and county fully realise this vision for the future, the NTA is planning an investment of half a billion Euro to develop Sustainable Transport Corridors, revamping key roads and streets to enhance provision for buses, cyclists and pedestrians, as a key component of BusConnects Cork.

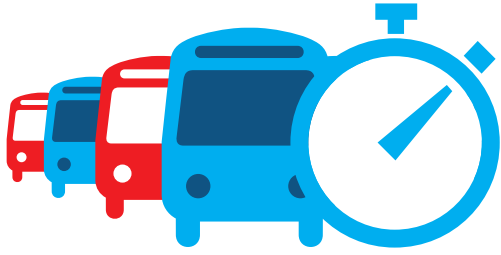
For the people of Cork, this investment will mean greater connectivity to employment, to education, to family and friends, to retail and to the burgeoning social and cultural fabric of the region.

This will help the city achieve its climate goals, become more sustainable, contribute to growing the economy, improve accessibility and drive down journey times in the city.

BusConnects is the NTA's programme of bus service improvement in Irish metropolitan areas. BusConnects Cork will entail a €600m investment and includes nine measures which will transform Cork's bus system, making public transport more useful to more people.

BusConnects Cork will enhance the capacity and potential of the public transport system. It will support the delivery of a low carbon and climate-resilient public transport system in addition to greatly improving accessibility to jobs, education whilst playing a key role in regeneration and improvements to public realm and City Centres.





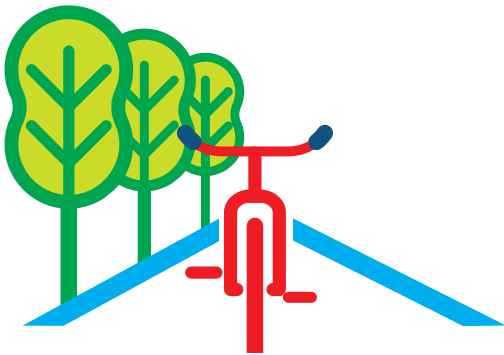
Enhance the capacity and potential of the public transport system by improving bus speeds, reliability and punctuality through the provision of bus lanes and other measures to provide priority to bus movement over general traffic movements



Support the delivery of an efficient, low-carbon and climate-resilient public transport service, which supports the achievement of Ireland's emission-reduction targets



Improve accessibility to jobs, education and other social and economic opportunities through the provision of improved sustainable connectivity and integration with other public transport services



Enhance the potential for cycling by providing safe infrastructure for cycling, segregated from general traffic wherever practicable

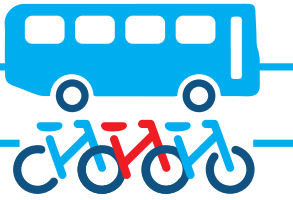
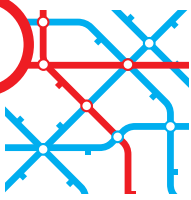
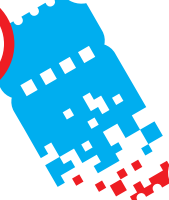



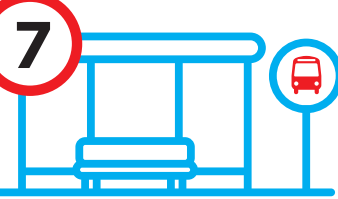




Enable compact growth, regeneration opportunities and more effective use of land in Cork, for present and future generations, through the provision of safe and efficient sustainable transport networks



Ensure that the public realm is carefully considered in the design and development of the transport infrastructure and seek to enhance key urban focal points where appropriate and feasible

BusConnects Cork aims to overhaul the current transport system in the Cork Metropolitan Area through:

-  **1** Building a network of new **Bus and Cycle Corridors**
-  **2** Completely redesigning the bus network
-  **3** New state-of-the-art ticketing system
-  **4** Implementing **Cashless payment system**
-  **5** Revamping the fare system
-  **6** New bus livery
-  **7** New bus stops and shelters with better signage and information
-  **8** New **Park & Ride** sites in key locations
-  **9** Transitioning to a **zero emissions bus fleet**

A number of the initiatives are already underway including the **redesigning of the Bus Network** in the Cork metropolitan area which had two rounds of public consultation during 2021. The Final Redesigned Bus Network for Cork was recently published and will be implemented during 2023 / 2024.

The **restructuring of the fare system** with a new 90-minute fare, that will allow passengers to take multiple trips on various modes of transport within 90 minutes of one another without incurring any additional financial penalty. Transitioning the bus fleet from diesel to fully electric zero-emissions vehicles is also a cornerstone of the BusConnects programme. This transition is already underway in Ireland's major cities with the first fully electric buses for Cork planned to be delivered in 2023.

1.3 What is the Sustainable Transport Corridor Project?

The proposals are to invest in Sustainable Transport Corridors that will have continuous bus priority – generally, a continuous bus lane in each direction, but other arrangements are used in constricted locations. This will remove the delays currently being experienced by the bus system, which will grow worse as congestion increases, and allow the buses to transport their many thousands of passengers with greater certainty about the arrival times to their destinations.

Along these corridors, we also intend to provide segregated cycle tracks in each direction, separated as far as is practically possible from general traffic. In areas where this may prove difficult to achieve, we intend to provide offline cycle tracks, where a cycle track will divert off the Sustainable Transport Corridor and onto a quieter road or purpose-built cycleway, before re-joining with the corridor.

The proposed Sustainable Transport Corridors will feature new cycling and walking infrastructure as well as improving bus priority on roads and streets in Cork. The new corridors will help improve the number of people walking and cycling to work and college, shopping, meeting friends; while radically improving the frequency and reliability of bus services across the city.

93km of bus lane/
bus priority



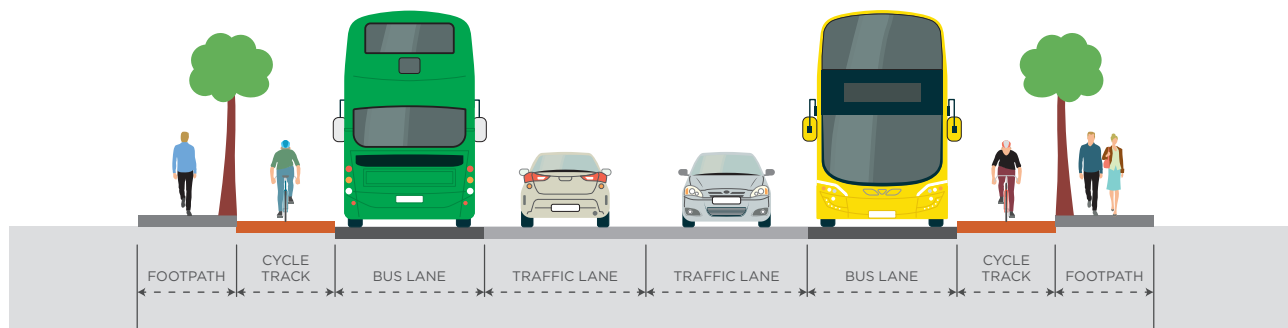
112km of cycle facilities
(one direction)
delivering 56km of
the cycle network



1.4 Potential Road Layout

To create the Sustainable Transport Corridors changes to current road layouts will need to be designed and built. The new design will allow for improved footpaths, segregated cycle tracks where achievable and dedicated bus lanes to remove the buses from congestion. An example of a road layout is shown below – however, this layout is only possible in certain areas.

All of the routes are at Emerging Preferred Route (EPR) options at this stage. There will be extensive public consultation undertaken in relation to these proposals and it is likely that various refinements and changes will be incorporated as that public engagement and dialogue progresses.



1.5 What are the benefits of the Sustainable Transport Corridor Project?

The Sustainable Transport Corridors being proposed to realise the vision of the Cork Metropolitan Area Transport Strategy will achieve a number of benefits which will have far-reaching influence on all modes of transport in Cork.

1.5.1 Improved Bus Journey Times

By improving the roads and infrastructure that the bus services operate on, ultimately BusConnects Cork will achieve a much more efficient bus system for Cork. By improving bus priority across the city, journey times will be reduced and will become much more predictable.

Consistently faster and more predictable journey times means a more reliable bus system. This improved reliability will make public transport in Cork more appealing to more people, and resourcing the bus services with drivers and buses will become more streamlined.

1.5.2 Better Environment for Cyclists

BusConnects Cork entails much more than just investment in buses and bus lanes, in fact, this plan will provide much needed cycling facilities and make it easier, safer and more attractive to cycle around the Cork City region.

Only 1% of the 803,000 trips that are made in the Cork Metropolitan Area on an average weekday are made on bicycles. A significant factor in the low number of cyclists is the lack of safe cycling infrastructure and the Sustainable Transport Corridor Project aims to significantly improve this by building a network of cycle lanes and cycle tracks that will make up the core of the region's cycling network.

The major Sustainable Transport Corridors across the metropolitan area are also the main

cycling arteries. The reconfiguration of these roads for bus lanes provides the opportunity to transform the cycling infrastructure at the same time.

On each of the 12 Sustainable Transport Corridors, our objective is to invest in and provide high-quality cycling facilities, segregated from the bus lanes and general traffic lanes as far as is practicable. Approximately 112km of cycle facilities (in one direction) will be built which will deliver 56km of the cycle network. A better cycling network is good for all transport users. It avoids cyclists sharing general traffic lanes or bus lanes with buses and will remove many of the conflicts between general traffic, buses and cyclists. The cycling infrastructure delivered under this programme will form the core of the region's cycling network and deliver a radical stepchange in cycling facilities in Cork.

1.5.3 Enhanced Facilities for Pedestrians

A key component of the Sustainable Transport Corridors project is to use

this unique opportunity to create a better environment for pedestrians as we improve these corridors. In particular, we will look to add new footpaths in areas where they are currently lacking, improve the quality of footpaths and pedestrian crossings, as well as expanding pedestrian facilities at junctions. We will also enhance key local centres with public realm improvements including additional landscaping and outdoor amenities.

1.5.4 Sustainable and Liveable City

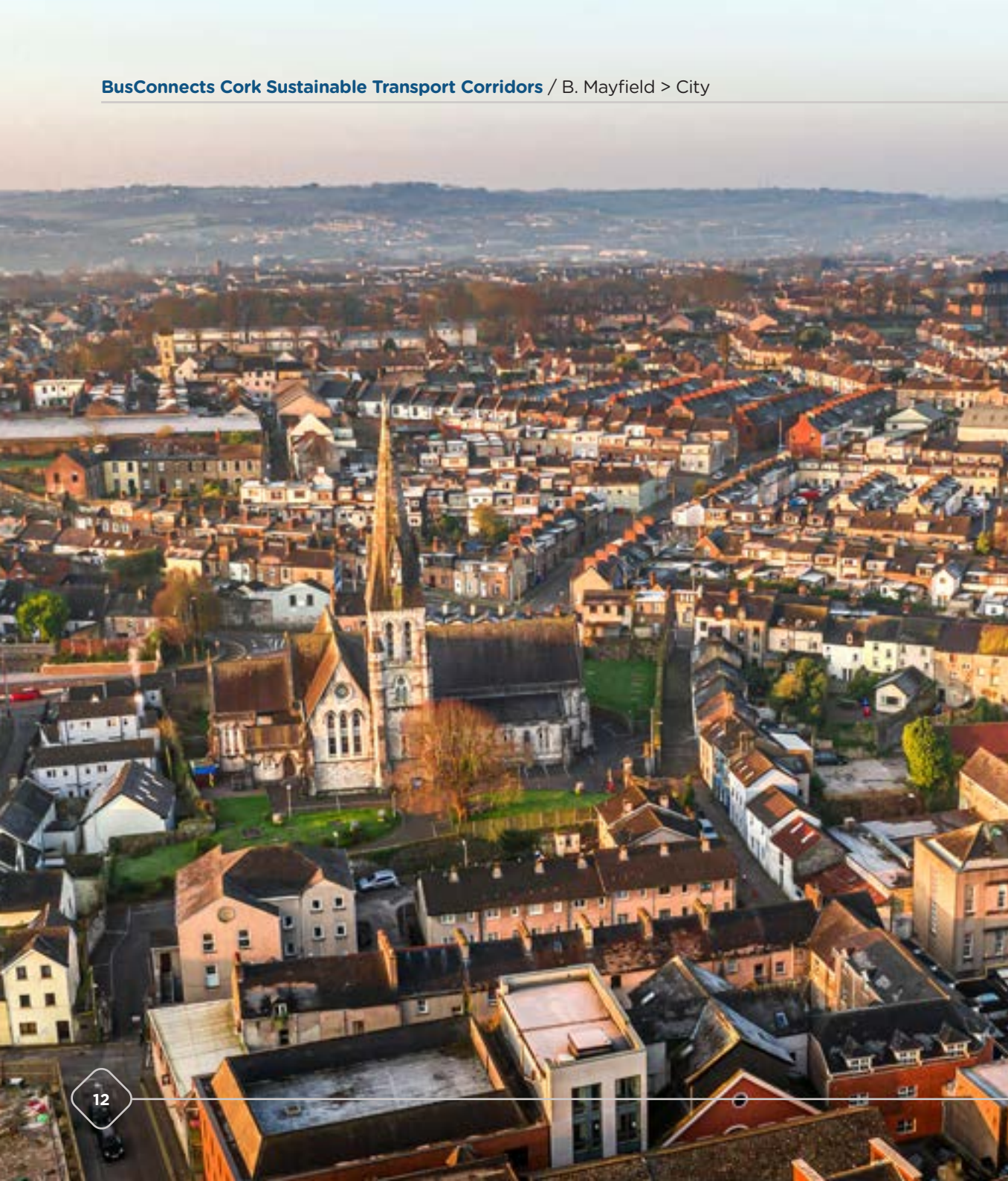
BusConnects Cork is about making sustainable transport a better and more accessible option. By providing a high-quality, frequent and reliable bus service, and improving cycling and pedestrian infrastructure, we can make Cork a more attractive place to live, work and visit. Moving some people from their cars onto buses, bicycles and footpaths will make Cork a less congested, and more climate friendly region. More areas of the region will be accessible by public transport and the inclusion of people with additional needs will be carefully considered at all stages of the design process. Effective and accessible public transport will allow people of

all ages and abilities to reach their full potential and participate wholly in society.

1.5.5 Supporting the Economy

A well-functioning public transport system is a basic requirement for any metropolitan area that aspires to provide plenty of employment opportunities for its people into the future. With bus and rail, Cork boasts some excellent services but if it is to achieve its potential as the fastest growing city in Ireland, and to continue to attract the best jobs and the best employers, we have to develop a transport system that will meet the needs of such a rapidly developing region.

Creating dedicated bus lanes and safer cycling facilities will make journeys by bus or on a bike more convenient, attractive and reliable. It will allow people to plan journeys with confidence and therefore make Cork a more attractive location for employers, leading to increased economic activity and the regeneration of the City. It will also make it easier for people to get out and enjoy the city and all it has to offer, which is good news for businesses in the city centre and beyond.

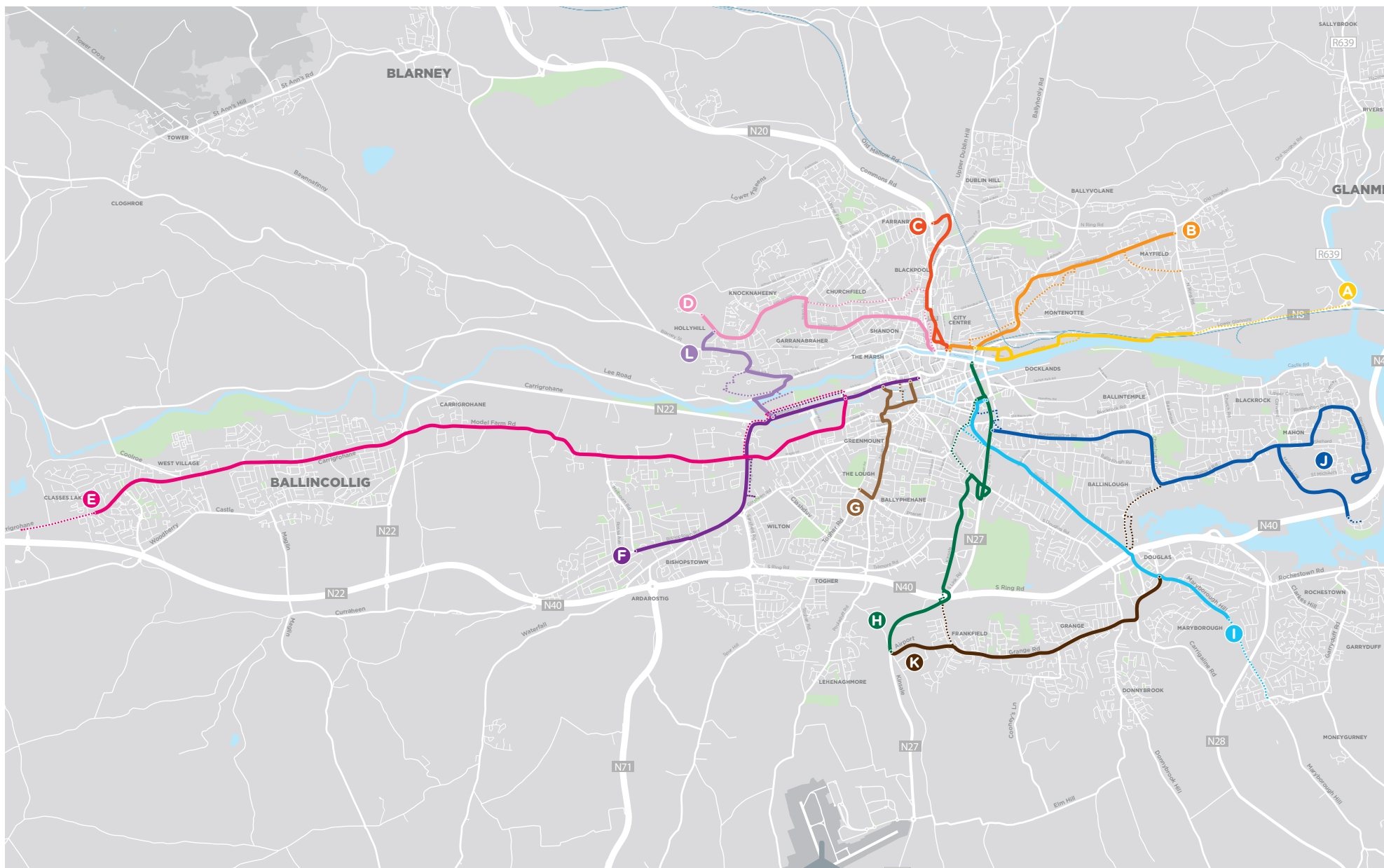


1.6 Emerging Preferred Routes

Sustainable Transport Corridors

- A** Dunkettle to City
- B** Mayfield to City
- C** Blackpool to City
- D** Hollyhill to City
- E** Ballincollig to City
- F** Bishopstown to City
- G** Togher to City
- H** Airport Road to City
- I** Maryborough Hill to City
- J** Mahon to City
- K** Kinsale Road to Douglas
- L** Sunday's Well to Hollyhill

———— Sustainable Transport Corridor
..... Alternative Cycle Facilities



2. Emerging Preferred Routes

2.1 Emerging Preferred Route for Mayfield to City

The Emerging Preferred Route set out in this consultation document was identified following an assessment of various alternatives.

The route selection process involved identification and consideration of possible options taking account of criteria including local impacts on property frontage, existing traffic patterns and broad assessment of environmental impacts. A Feasibility Report setting out details of the assessment work undertaken is available on www.BusConnects.ie.

Arising from that work an Emerging Preferred Route has been identified for this corridor and public feedback on that proposal is now sought. It is important to know that this option is not adopted yet. Only following this public consultation and the review of the submissions received will a decision on the final Preferred Route be made.

2.2 Mayfield to City Overview

The Mayfield to City Sustainable Transport Corridor (STC) commences at Tinker's Cross (intersection of the North Ring Road (R635) and Old Youghal Road. The corridor proceeds on Old Youghal Road to Dillon's Cross. From here the corridor proceeds on Ballyhooly Road (R614) to St Luke's Cross and onwards along Summerhill North towards the city centre.

Old Youghal Road, Ballyhooly Road and Summerhill North are physically constrained in a number of areas. It is proposed that bus priority will be provided through several different measures such as bus lanes, bus gates and traffic signals. Removal of some on-street parking spaces is also required in places.

Cyclists take an alternative route to buses commencing instead at the intersection of the North Ring Road (R635) and Colmcille Avenue, heading north towards Old Youghal Road via Iona Park. From here the facilities for pedestrians, cyclists and buses merge and travel west along Old Youghal Road as far as Murmont Lawn. From here a 'quietway' route is proposed via St Joseph's Church and Gardiner's Hill before

cyclists re-join Ballyhooly Road just north of St. Luke's Cross. Cycling to the city continues via Wellington Road.

The following paragraphs will describe each section of STC B in more detail, identifying the measures proposed so that sustainable transport is prioritised.

2.2.1 Tinker's Cross to Dillon's Cross

Old Youghal Road between Tinker's Cross and Dillon's Cross will remain open to local access traffic, buses, taxis and cyclists with the following restrictions:

- Bus gates (short sections of bus/cycle-only roadway) are proposed at Tinker's Cross, Iona Park, Murmont Park and New Road.

These proposed bus gates will reduce traffic volumes on Old Youghal Road, which allows buses to move freely.

City bound through traffic will be directed onto:

- North Ring Road to the N20;

- ▶ North Ring Road to Lower Glanmire Road(N8), via Silversprings.

A two-way cycle track is proposed along Colmcille Avenue between North Ring Road and Old Youghal Road/ Iona Park. This will include new cycle crossing facilities at the junction of Colmcille Avenue and North Ring Road to safely connect to the Lotabeg area of the city (adjacent to the Mayfield Garda Station).

A two-way cycle track is proposed on Old Youghal Road between Iona Park and Murmont Lawn. From here it is intended to direct cyclists along Gardiner's Hill as a 'quietway', which involves cyclists sharing the traffic lane with general traffic which is relatively low in volume. To achieve this, it is proposed to route the cycle track through the grounds of St Joseph's Catholic Church.

It is proposed to rearrange Ashburton Hill and a short section of St Joseph's Drive to one way inbound (towards the city) for general traffic in order to allow for the proposed outbound (towards Mayfield) uphill cycle track.

The proposed arrangements are due to the constrained road width along sections of the existing Old Youghal Road and Ballyhooly Road. The existing road has insufficient space to facilitate a bus lane, cycle lane and a general traffic lane in both directions.

To facilitate these sustainable transport improvements, removal of some on-street parking spaces is required in places. It is also proposed that land take would be required at the following approximate locations:

- ▶ Lands of private properties between Tinker's Cross and Kerry Road;
- ▶ Land of private properties adjacent to Iona Park;
- ▶ Lands of private properties between Iona Park and Knights Court and
- ▶ Lands of private properties between Old Youghal Road and Gardiner's Hill.

The indicative extents of this land take are shown on the drawings shown in the Appendix of this brochure.



Proposed Enhancements to Urban Spaces and Pedestrian/Cycle Environment

Location	Proposed Enhancements
Old Youghal Road	<p>Improved bus stops and new toucan crossing locations to facilitate easy access to bus stops and generally improved permeability for pedestrians.</p> <p>A traffic calmed environment will provide a safer and more attractive environment for pedestrians and cyclists.</p> <p>New pedestrian crossing provided adjacent to Mayfield Sports Complex.</p> <p>Potential for urban pocket park adjacent to Mayfield Branch Library.</p>
Old Youghal Road (from Murmont Lawn), Iona Park & Colmcille Avenue	<p>Continuous segregated cycle lanes on both sides of the road.</p> <p>New cycle crossing facilities at the junction of Colmcille Avenue and North Ring Road to safely connect to the Lotabeg area of the city.</p>

2.2.2 Dillon's Cross to St Luke's Cross

Ballyhooly Road is very constrained and will require traffic management measures to achieve bus priority.

Due to the constrained road width of the existing

Ballyhooly Road, (between Dillon's Cross and St Luke's Cross), it is intended to direct cyclists along Gardiner's Hill as a 'quietway', which involves cyclists sharing the traffic lane with general traffic which is relatively low in volume. It is proposed to provide a right turn ban from Ballyhooly Road to Gardiner's Hill to reduce through traffic and further encourage the use of

Gardiner's Hill as a 'quietway'. No physical works are proposed on Gardiner's Hill, south of New Road except for a raised table at the junction of Ballyhooly Road and Gardiner's Hill.

A two-way cycle track is proposed along Ballyhooly Road to connect cyclist from the 'quietway' on Gardiner's Hill to St. Luke's Cross and

from here to the proposed two-way cycle track on Wellington Road.

To facilitate these sustainable transport improvements, removal of some on-street parking spaces is required in places. It is also proposed

that land take would be required at the following approximate locations:

- Lands of private properties on Ballyhooly Road near Dillon's Cross.

Proposed Enhancements to Urban Spaces and Pedestrian/Cycle Environment

Location	Proposed Enhancements
Gardiner's Hill	'Quietway' will provide a safer and more attractive environment for pedestrians and cyclists.
St Luke's Cross	<p>Converted to a signalised junction to provide bus priority and to prioritise pedestrian and cycle friendly design. Signalised crossings for pedestrians provided on all arms of the junction.</p> <p>Left turn slip from Middle Glanmire Road to Summerhill North removed to facilitate easy pedestrian crossing.</p>

2.2.3 St Luke's Cross to City

Summerhill North is very constrained and will require traffic management measures to achieve bus priority.

Bus priority is proposed on Summerhill North through short sections of bus lane and by using bus priority traffic signals, which means that buses will get a "head-start" over cars.

A two-way cycle track is proposed on Wellington Road between St Luke's Cross and York Street, with the two-way cycle track continuing along York Street.

The STC will link into the works currently being implemented as part of the MacCurtain Street Public Transport Improvement Scheme.

To facilitate these sustainable transport improvements, removal of some on-street parking spaces is required in places. It is also proposed that land take would be required at the following approximate locations:

- Lands of private properties on Wellington Road between Military Hill and Alexandra Road.

The indicative extents of this land take are shown on the drawings shown in the Appendix of this brochure.

Proposed Enhancements to Urban Spaces and Pedestrian/Cycle Environment

Location	Proposed Enhancements
Mahony's Avenue/Summerhill North	Footway improved/widened and new pedestrian crossing provided.
Wellington Road	Continuous segregated cycle lanes on both sides of the road. One new signalised toucan crossing to facilitate easy movement of cyclists and generally improved permeability for pedestrians.
Wellington Road/Military Hill	Junction upgraded to prioritise pedestrian and cycle friendly design.
Summerhill North	Three new signalised toucan crossings to facilitate easy access to bus stops and generally improved permeability for pedestrians.



2.3 Key Facts

Approximate number of properties that may be impacted	17
Approximate number of on-street parking spaces that may be removed	159
Approximate number of roadside trees that may be removed	4
Approximate STC route length	3.5km
Approximate cycle route length	3.5km
Current bus journey time	up to 32 mins
BusConnects journey time	15 mins
Future bus journey time without BusConnects	38 mins

2.4 Understanding the terminology

1. Sustainable Transport Corridor (STC):

Part of the overall BusConnects Programme is to create 12 Sustainable Transport Corridors (STC). A STC is an existing road with bus priority so that buses can operate efficiently, reliably and punctually. This generally means full length dedicated bus lanes on both sides of the road from start to finish of each corridor or other measures to ensure that buses are not delayed in general traffic congestion. The bus lanes will be alongside general traffic and segregated cycle lanes/tracks where feasible.

2. Segregated Cycle Tracks:

A segregated cycle track is a separate section of the road dedicated for cycling only. This space will generally be isolated from other vehicular traffic by a physical kerb. Where it is not physically possible to have segregated cycle tracks there will be the option of quiet roads and shared cycling on reduced speed roads for cyclists.

3. Emerging Preferred Route (EPR):

Emerging Preferred Route (EPR) are the initial design options for each route which will now be subject to a non-statutory public consultation process. The EPR's, in some cases with multiple sub-options, are to inform the public of the likely layout of the roadway with the necessary STC infrastructure in place. They include possible impacts on front gardens, and likely changes to how traffic will operate to facilitate bus priority.

4. Bus Gate:

A Bus Gate is a sign-posted short length of stand-alone bus lane. This short length of road is restricted exclusively to buses, taxis and cyclists



plus emergency vehicles. It facilitates bus priority by removing general through traffic along the overall road where the Bus Gate is located. General traffic will be directed by signage to divert away to other roads before they arrive at the Bus Gate.

5. Signal Controlled Priority (SCP):

Signal Controlled Priority (SCP) uses traffic signals to enable buses to get priority ahead of other traffic on single lane road sections, but it is only effective for short distances. This typically arises where the bus lane cannot continue due to obstructions on the roadway. An example might be where a road has pinch-points where it narrows due to existing buildings or structures that cannot be demolished to widen the road to make space for a bus lane. It works through the use of traffic signal controls (typically at junctions) where the bus lane and general traffic lane must merge ahead and share the road space for a short distance until the bus lane recommences downstream. The general traffic will be stopped at the signal to allow the bus pass through the narrow section first and when the bus has passed the general traffic will then be allowed through the lights.



Signal Controlled Priority (SCP)



1. Traffic proceeds as normal.



2. As the bus approaches, the light signal changes to halt general traffic.



3. The bus has priority to proceed.



4. When the bus has cleared the junction, general traffic proceeds.

6. Toucan Crossing:

A Toucan Crossing is a roadway crossing designed to enable both pedestrians and cyclists to cross the road with purposefully designed signal controls.

7. Quiet Street Treatment:

Where STC roadway widths cannot facilitate cyclists without significant impact on bus priority, alternative cycle routes are explored for short distances away from the STC bus route.

Such offline options may include directing cyclists along streets with minimal general traffic other than car users who live on the street. They are called Quiet Streets due to the low amount of general traffic and are deemed suitable for cyclists sharing the roadway with the general traffic without the need to construct segregated cycle tracks or painted cycle lanes. The Quiet Street Treatment would involve appropriate advisory signage for both the general road users and cyclists.

8. Urban Realm:

Urban Realm refers to the everyday street spaces that are used by people to cross, shop, socialise, play, and use for activities such as walking, exercise or commute to/from work. The Urban Realm encompasses all streets, squares, junctions, and other rights-of-way, whether in residential, commercial or civic use. When well-designed and laid out with care in a community setting, it enhances the every-day lives of residents and those passing through. It typically relates to all open-air parts of the built environment where the public has free access. It would include seating, trees, planting and other aspects to enhance the experience for all.

3. Understanding Potential Challenges and Ways to Mitigate

3.1 Overview

Investing in public transport in Cork is essential for the development of the city and with this comes a number of challenges. Developing on-street sustainable transport infrastructure and investing in urban renewal involves many competing demands which have to be addressed in a balanced and realistic way. Cork is no different as the establishment of the city dates back to the 6th century. Whilst it has grown into a modern metropolitan city there are still many older quarters made up of narrow, winding and increasingly congested streets. Many of these streets are hilly with steep gradients, especially north of the River Lee. There are many streets with narrow or missing footpaths. The uniqueness of many parts of the city and the limitations of physical space to work with presents significant, but surmountable challenges for the provision of the required level of bus priority and cycling provision.

However, the NTA is committed to continuing its partnership with Cork City Council to mitigate any of the potential impacts of the infrastructural

work and ensure that this €600 million investment in Cork is realised.

The NTA has significant experience of designing bus and cycle infrastructure and, importantly, engaging extensively with local communities, residents and businesses. We are acutely aware of the issues and concerns that may be raised regarding the impact of any change to road layout, loss of portions of gardens, parking and trees. All decisions taken by the NTA are to achieve better sustainable public transport options for people and address the climate crisis. Therefore, we endeavour to lessen likely impacts and where feasible find alternative solutions.

In addressing the likely challenges, people in all areas of the city will enjoy increased access to jobs, education and other essential services. Communities will benefit from increased walking and cycling infrastructure and urban renewal while businesses will enjoy greater connectivity to attract the best talent to the city.



3.2 Challenges and how we will mitigate to address them

3.2.1 Changes to Traffic Movement to improve Sustainable Transport Options

Considerations:

By creating more space and priority for buses and cycling, there will be changes to how the private car currently moves around the streets. Some roads may become one-way, new bus-only sections will be introduced and in some places, general traffic will have to take new routes in and out of the city. Additional cycle routes will be built, generally segregated from vehicular traffic, and pedestrian crossings will be added and moved in some areas. These cycle routes along these key corridors are essential to generate the real benefits of cycling in the city.

Reducing and Balancing Potential Impact:

Where traffic is diverted and re-routed, adequate signage and road markings will be provided for people to navigate the new routes. While some access routes may change, vehicular access will be maintained to all properties.

3.2.2 Potential Acquisition of Portions of Gardens

Considerations:

There is very little unused space along many of the busy roads in the city and because of that, it will often not be possible to accommodate the bus lanes and cycle tracks in the width available. In order to achieve the required space, it will be necessary, in places, to acquire parts of the garden space of houses plus land in front of commercial properties, in order to allow the bus and cycle facilities to be provided. Where this is necessary there will be appropriate consultation and engagement with potentially impacted property owners.

Redesign & mitigation landscaping to balance the reduction of garden space:

Where lands, such as parts of gardens, are being acquired for widening – we will purchase the portion of front gardens from property owners; ensure new landscaping and replanting of the gardens as well as providing compensation for the garden portion loss and disruption.

3.2.3 To facilitate better walking and cycling there will be reductions of On-Street Parking

Considerations:

Because the proposed corridors travel through residential and business areas, there will be a need to reduce the amount of on-street parking to accommodate the new layouts.

To offset the reduction of on-street parking:

Where there is a loss of parking spaces and it is appropriate to provide replacement spaces, we will seek to provide, where feasible, alternative parking close by for residents and businesses.

3.2.4 Tree replanting to offset the potential removal of some existing trees

Considerations:

As with the need to remove some parts of front gardens and alter footpaths, there will also be a need to remove some trees along some of the corridors.

Comprehensive Tree Planting Programme:

The NTA will, however, endeavour to maintain as many mature trees as possible. Moreover, where trees have to be removed from roadsides and footpaths, we will put in place a comprehensive replanting programme. This programme will use mature or semi-mature ready-grown trees where appropriate and, where it is feasible, plant them as close as possible to the original locations. This will ensure that every tree removed will be replanted as part of the project.

3.2.5 Road Works and Construction Sites

Considerations:

Widening roads, and building bus and cycle lanes, requires a certain amount of construction work. There will be the excavation of the existing roads, plus parts of gardens and footpaths where needed. There will be resurfacing, kerbing, replanting and landscaping. During the construction stages, the construction sites will be localised and managed on a road by road basis. As with any worksite and road works, there will be a certain level of noise, dust and temporary traffic diversions.

Lessening any construction work effects:

Traffic management will be very important to keep the traffic moving whilst ensuring local access for people and deliveries is always maintained. In addition, where private and public walls or fencing are removed – we will rebuild new garden walls and replace fencing where gardens have been affected and shortened. Also, where public or commercial walls and fencing have been taken they will be rebuilt and replaced.

3.2.6 Investing in Urban Renewal and Increasing Pedestrian Facilities

We will look for areas along the busy corridors where it is possible to improve the existing local spaces and the existing landscaping. It is important to use this opportunity to not only replace what is removed but to enhance the local areas. To do so, we will provide funding support for urban centre improvements and creating attractive local environments.

3.2.7 Community Forums

A series of Community Forums will be established as part of efforts to engage with people and organisations across the city as plans for the Sustainable Transport Corridors are developed, finalised and progressed. The aim is to create two-way communications with local communities, allowing information and feedback to be exchanged in a convenient and comprehensive manner. It is envisaged that the meetings of the Community Forums will be chaired by an independent chairperson and will feature community associations, special interest groups, business organisations and local public representatives as well as personnel from the NTA. For information on how resident and community group representatives can become a member of a Forum please visit the website www.busconnects.ie/cork.



4. The Process for the Acquisition of Land

While extensive efforts will be made to minimise the impact on the grounds of private properties, there will be locations where additional road widening will be necessary. This may require, for example, the acquisition of parts of front gardens, walls, fences, gates, driveways and the rebuilding of those elements to enable the street widening. In such cases the following process will apply.

Firstly, the NTA will issue information letters to each land owner and/or occupier along the Sustainable Transport Corridors who might, potentially, be impacted by widening proposals. These are not formal compulsory purchase order (CPO) notifications – no final decision on the proposals have been made at this stage. The intention of these letters is to start a direct dialogue between NTA and the potentially impacted parties.

After the issue of these information letters, design development and consultation will continue. During this time NTA will refine the design and consider options to reduce impacts on private lands. Direct dialogue between NTA and potentially impacted parties will continue to understand the likely impact of the proposed development and what arrangements can be made to reduce and, where possible, avoid those impacts.

At the end of the design process, probably early in 2024, the NTA will finalise the statutory planning documentation and submit formal consent applications to An Bord Pleanála for the proposed BusConnects schemes, including seeking confirmation to compulsorily purchase the necessary lands. It is at this stage that the NTA will serve formal notice on the actual impacted owners of land proposed to be compulsorily purchased for the projects.

It is then the role of An Bord Pleanála to decide whether or not the particular scheme should proceed to construction. Following receipt of the planning applications, there will be a period of statutory public consultation to allow those notified as being subject to some property

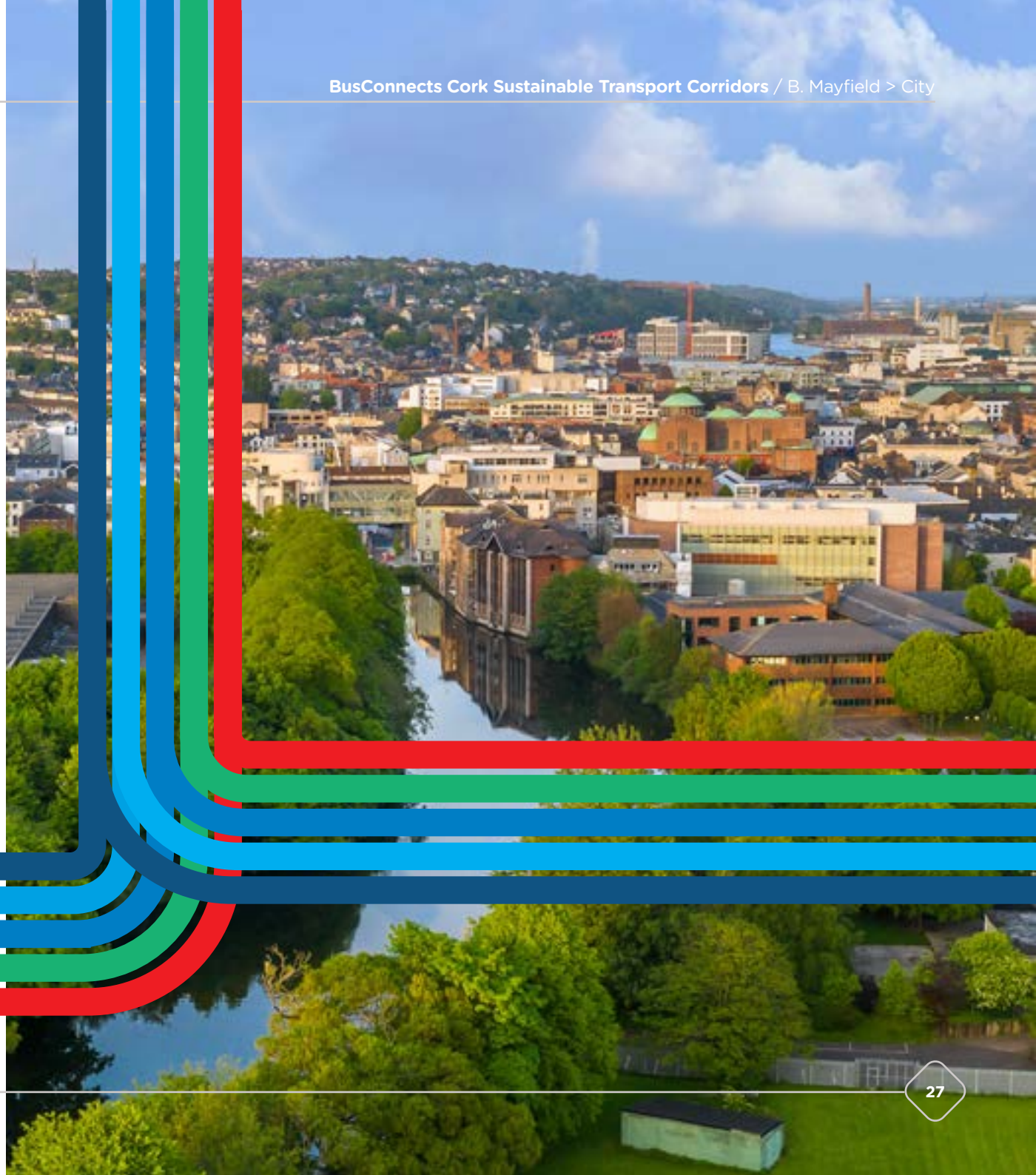
acquisition, and the public at large, to make submissions and/or objections directly to An Bord Pleanála. This will be followed by an Oral Hearing by An Bord Pleanála if deemed necessary. The statutory process will conclude with a decision by An Bord Pleanála on whether to:

1. Approve the proposed scheme with or without modifications and subject to whatever environmental conditions it considers appropriate, or refuse to approve the proposed scheme; and
2. Confirm the CPO or any part thereof with or without conditions or modifications, or annul the CPO or any part thereof.



If An Bord Pleanála grants approval for the schemes, the NTA will, from 2025 onwards, commence valuations and negotiations to acquire the lands in the CPO, and progress construction of the projects. The compensation payable for any acquisition will include the value of the land being acquired plus any devaluation (if applicable) in the remainder of the property, disturbance/disruption costs and professional fees such as a valuers and/or solicitors required for the acquisition.

The construction of each corridor will take up to two years to complete. The construction start dates for each of the 12 corridors will be managed over the period 2025 through 2030.



4.1 How the Project will progress through public consultations until Formal Planning



2024-2025

An Bord Pleanála Applications

- Submission of Applications to An Bord Pleanála to approve the Proposed Scheme and to confirm the associated CPO
- Statutory Consultation in accordance with the legislative requirements
- An Bord Pleanála deliberations including an Oral Hearing where required
- An Bord Pleanála may:
 1. Approve the Proposed Scheme with or without modifications and subject to whatever environmental conditions it considers appropriate, or refuse to approve the Proposed Scheme; and
 2. confirm the CPO or any part thereof with or without conditions or modifications, or annul the CPO or any part thereof.

2025-2030

ACQUISITION & CONSTRUCTION



Construction Commences on a Phased Basis - Each corridor upgrade will take up to 2 years to complete

5. How to take part in the public consultation and have your say

Please remember that the plans that we are publishing are proposals and that no final decision has been made on these matters in advance of the public consultation. We welcome all of your views. Where you do not like a proposal, please consider suggesting an alternative solution or other option for consideration.

5.1 If a property owner has land that may be impacted

If your property is potentially impacted by the proposals, a letter will have been delivered to the property and details of how to engage with the NTA are detailed in that letter. A dedicated property liaison representative will be available to contact each property owner and provide regular updates on the project.

5.2 General queries

The project website www.busconnects.ie/cork has a dedicated Sustainable Transport Corridor section and all 12 Brochures are available to view and download. General queries can be sent by email to corkstc@busconnects.ie

For queries where the information is not available on the website please contact - **1800 303 653**

5.3 How to send a submission

We are inviting submissions in relation to the proposals set out in this Emerging Preferred Routes Document.

Written submissions and observations may be made by:



Online: Click on "Public Consultation" section of the Sustainable Transport Corridor page on our website: <https://consult.nationaltransport.ie>



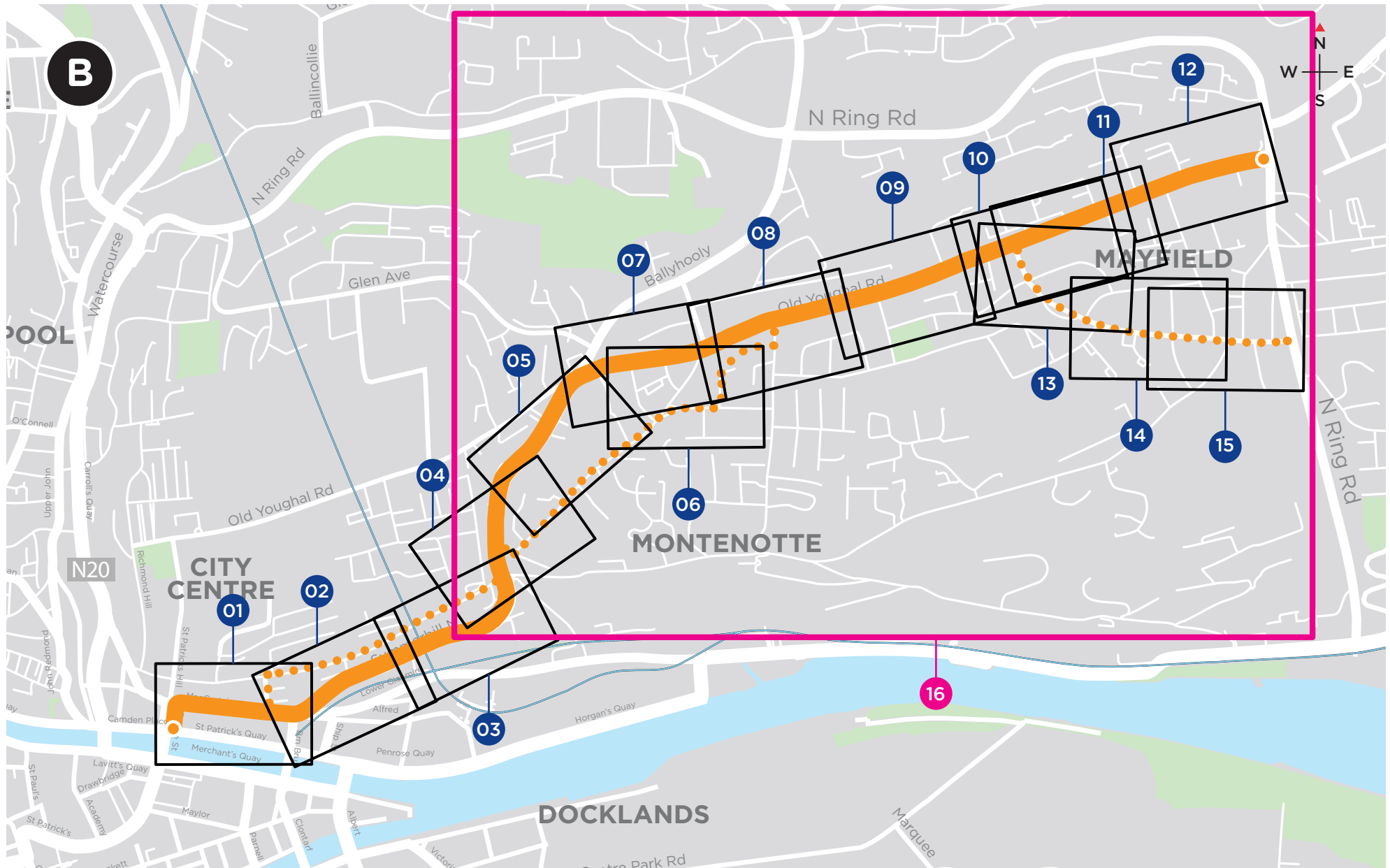
Or by post to:
**Cork Sustainable Transport
Corridors Project,
National Transport Authority,
Dún Scéine, Harcourt Lane,
Dublin 2 D02 WT20**



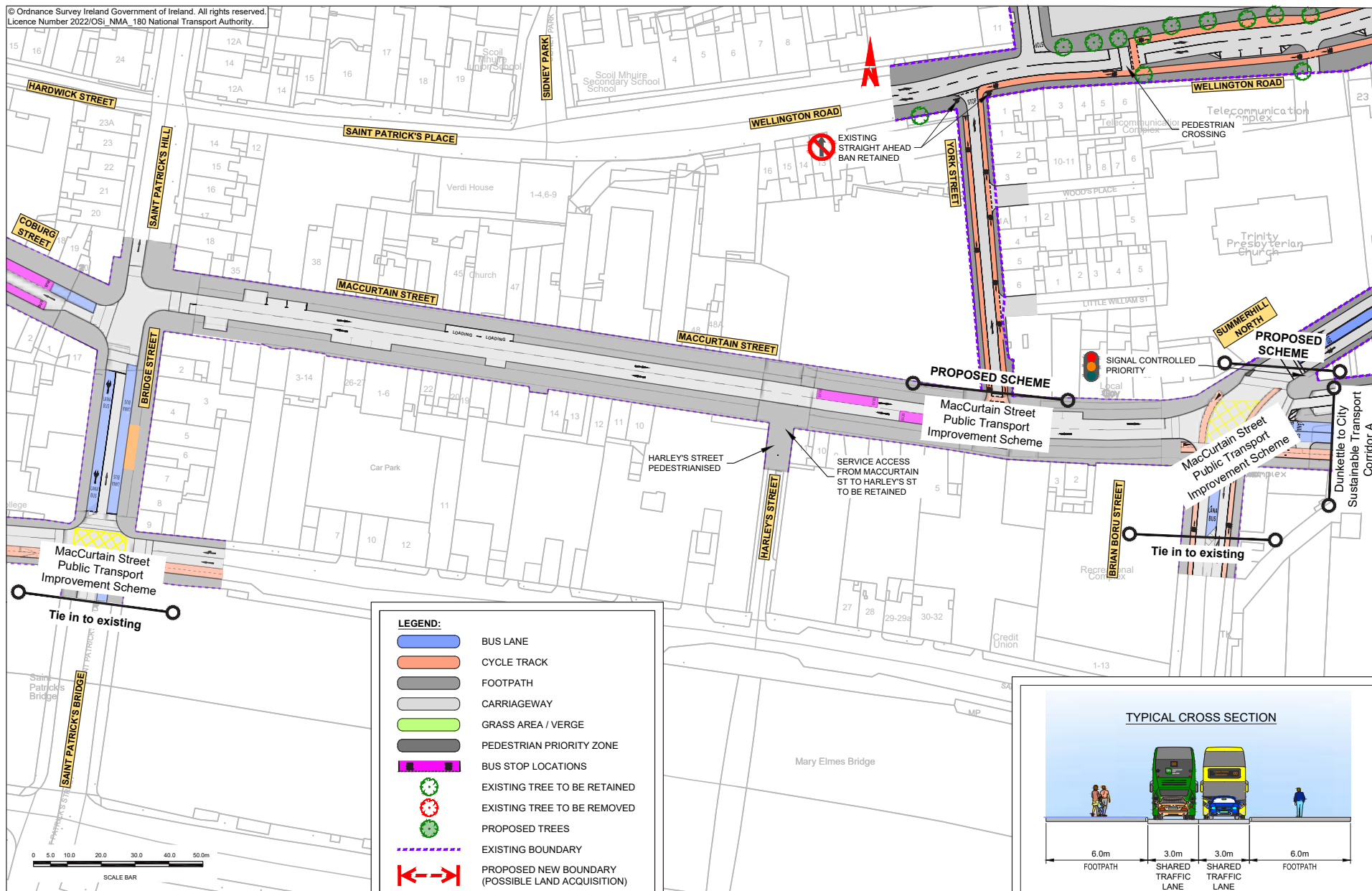
6. Appendices

- 6.1 Index maps
- 6.2 Route maps

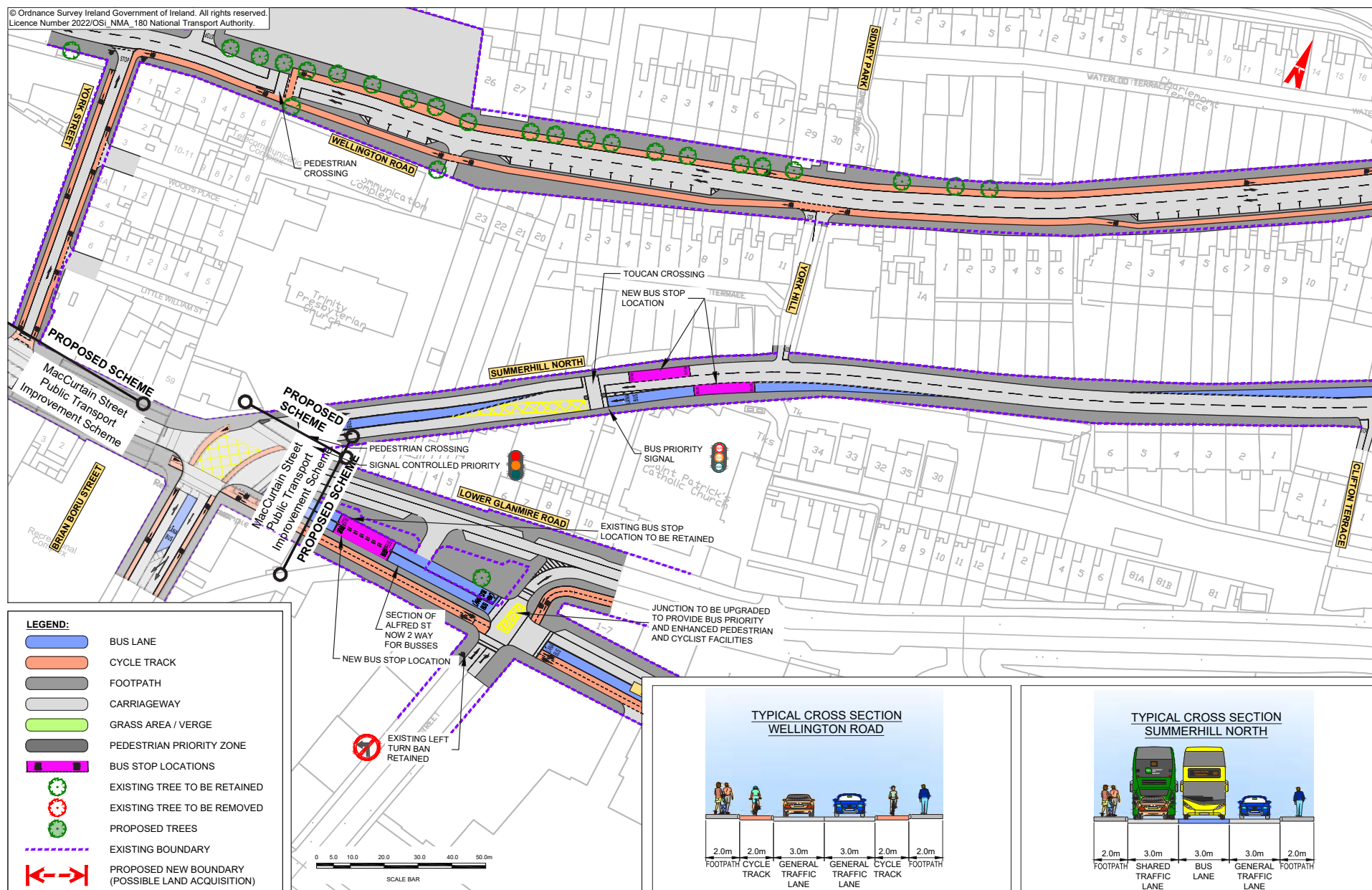
Index Map



NOTE: The Emerging Preferred Route shown on the following drawings is indicative only and is subject to change following consultation and as part of the design development process.

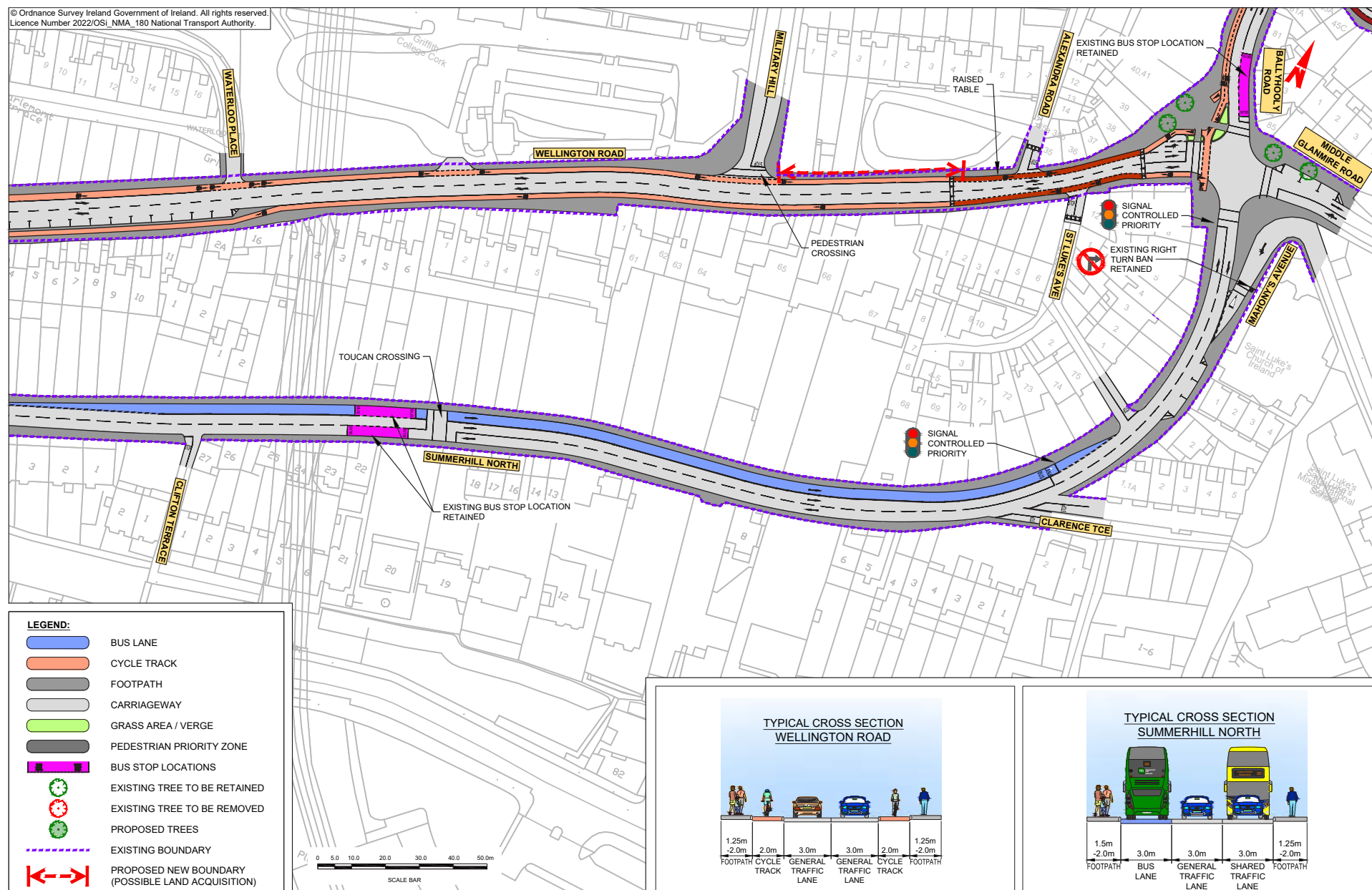






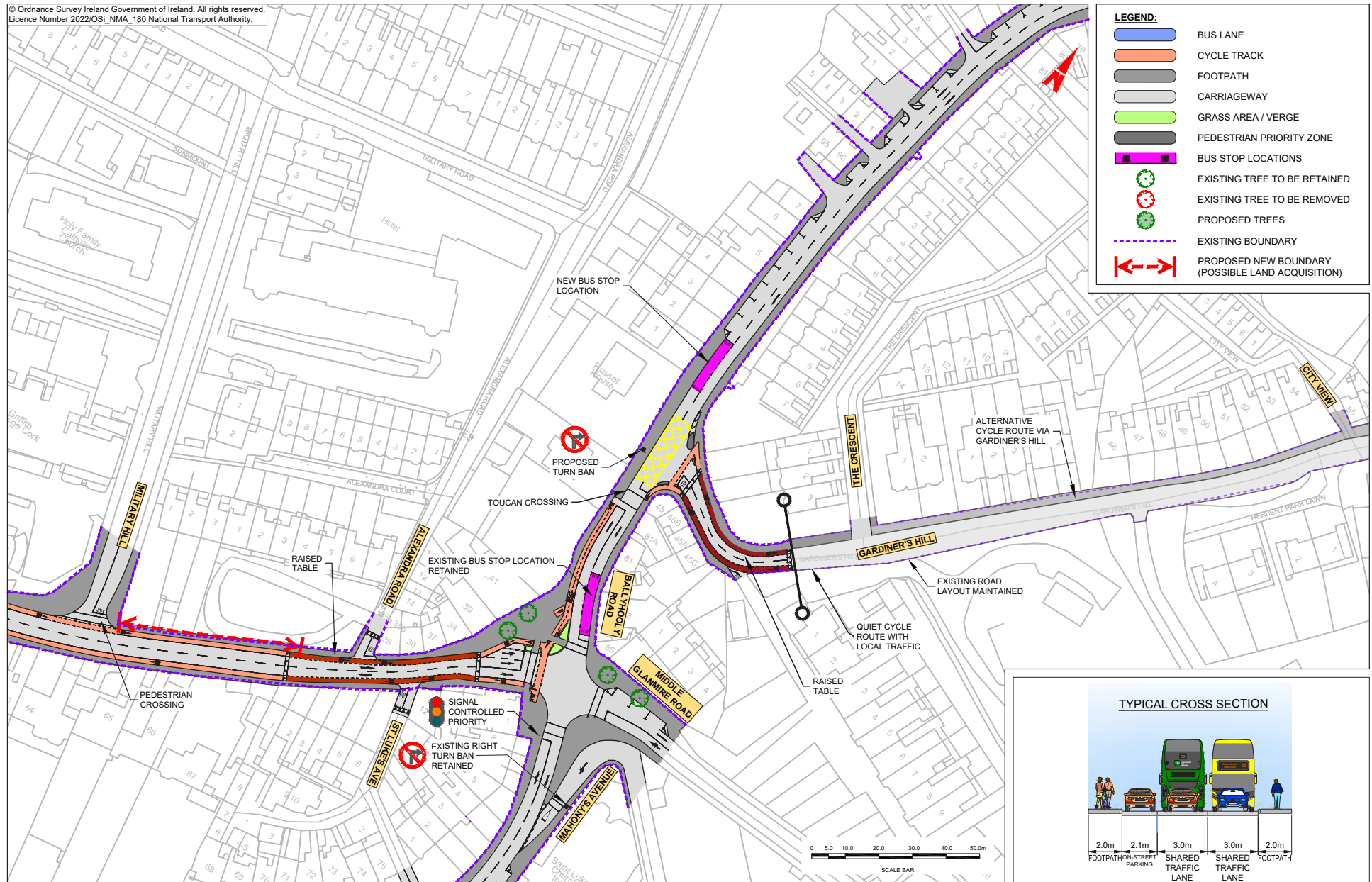
Indicative Layout - Wellington Road

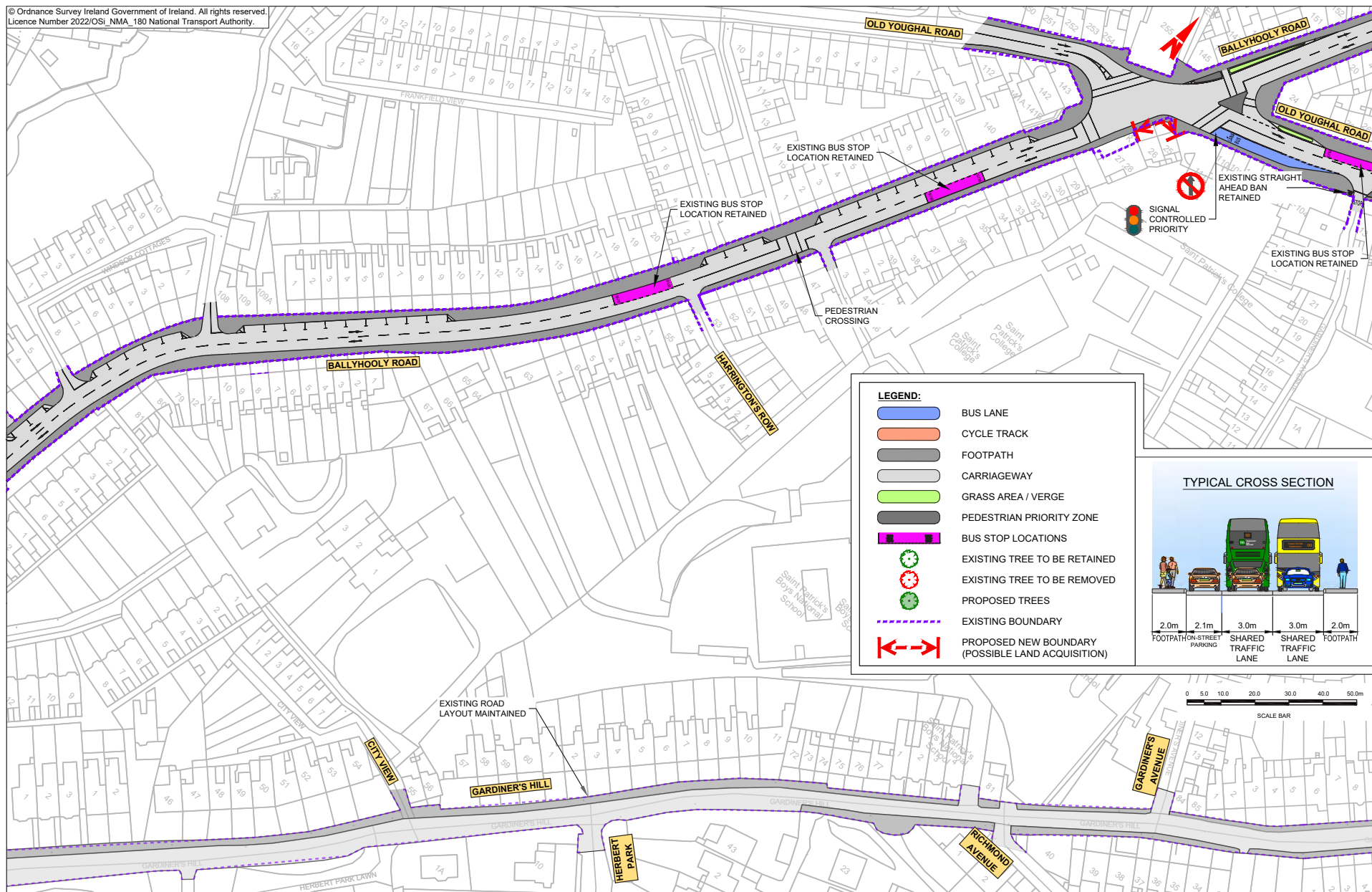




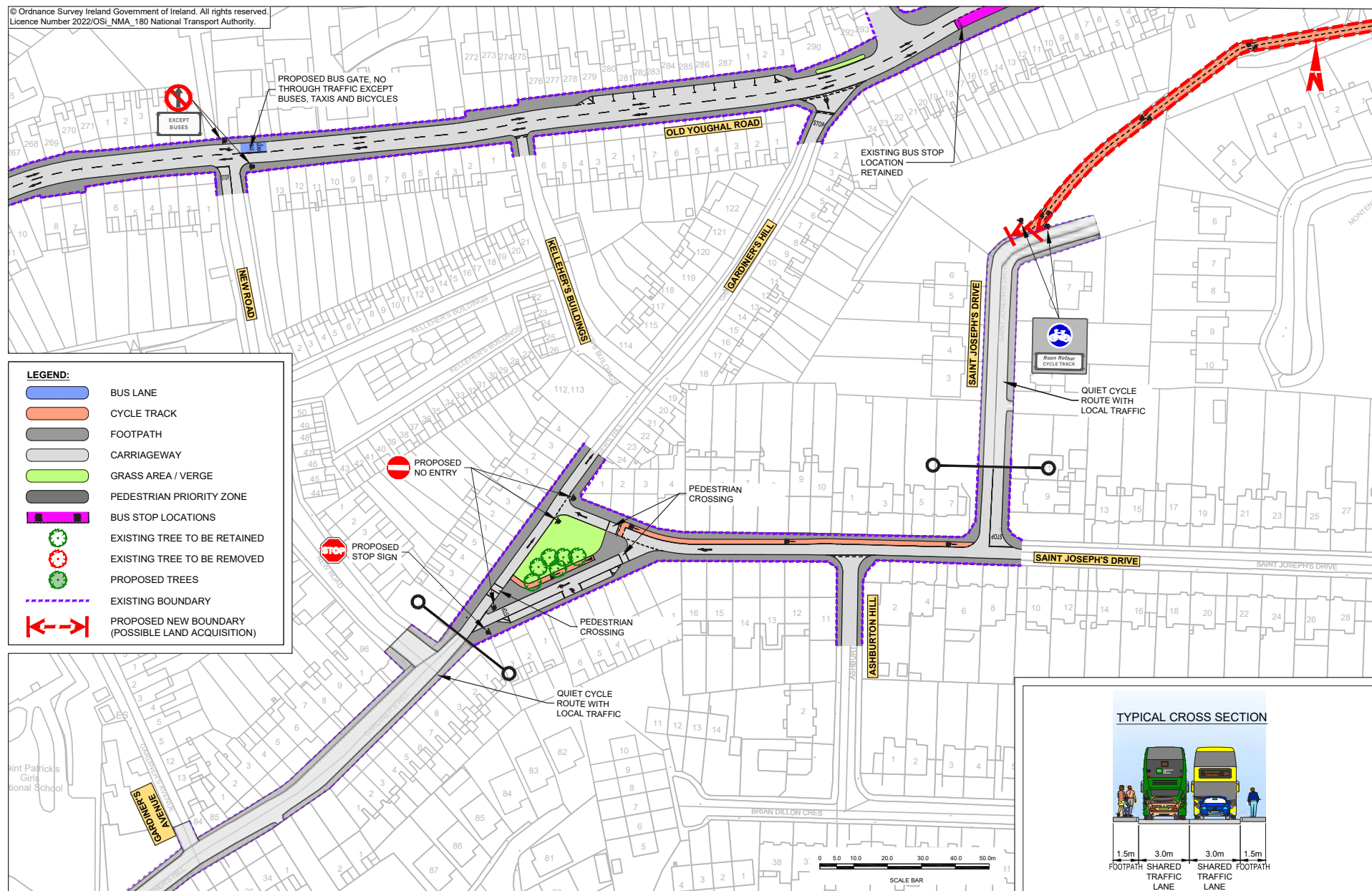
MAP 4: Emerging Preferred Route

© Ordnance Survey Ireland Government of Ireland. All rights reserved.
Licence Number 2022/OSI_NMA_180 National Transport Authority.

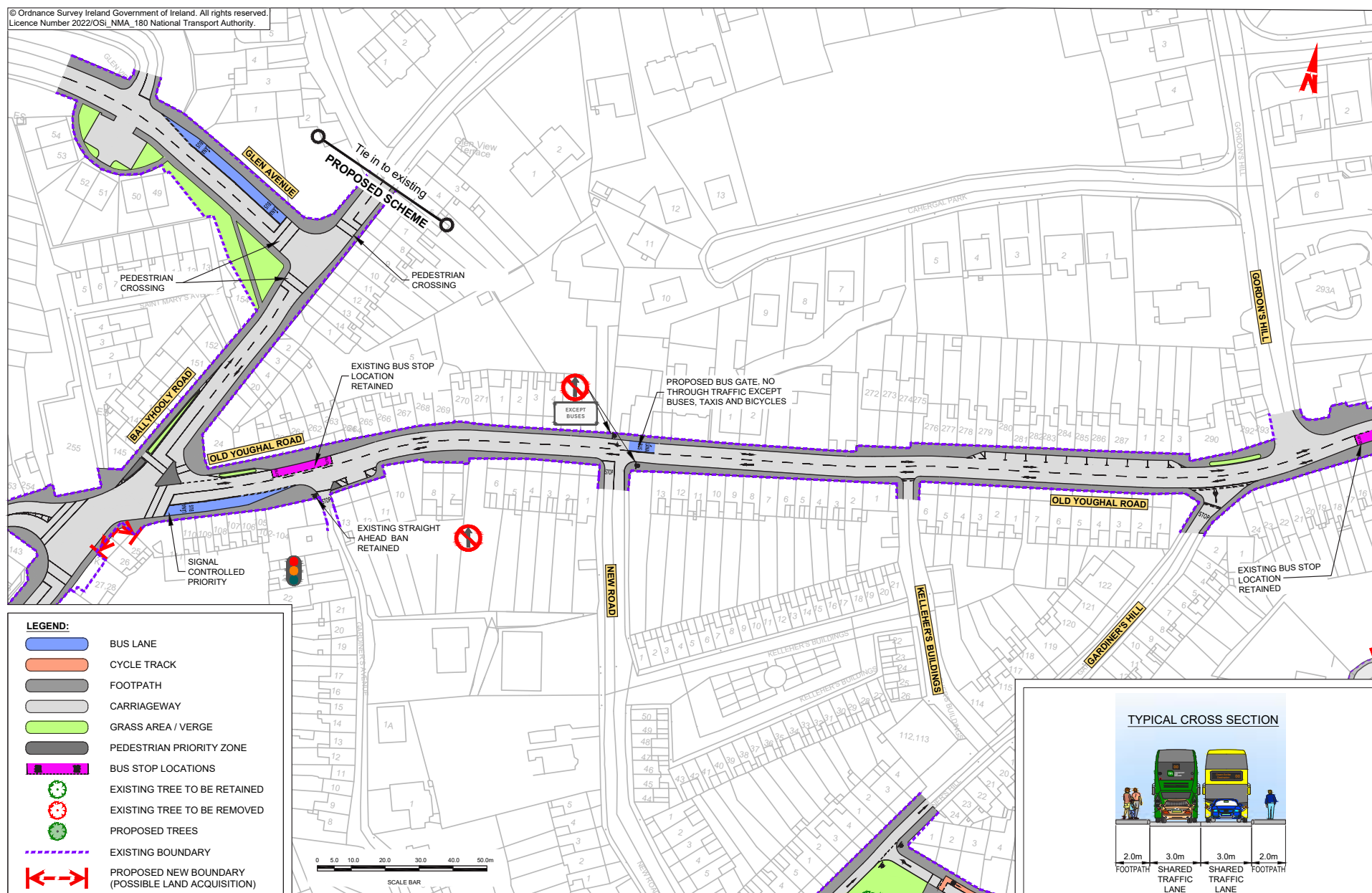




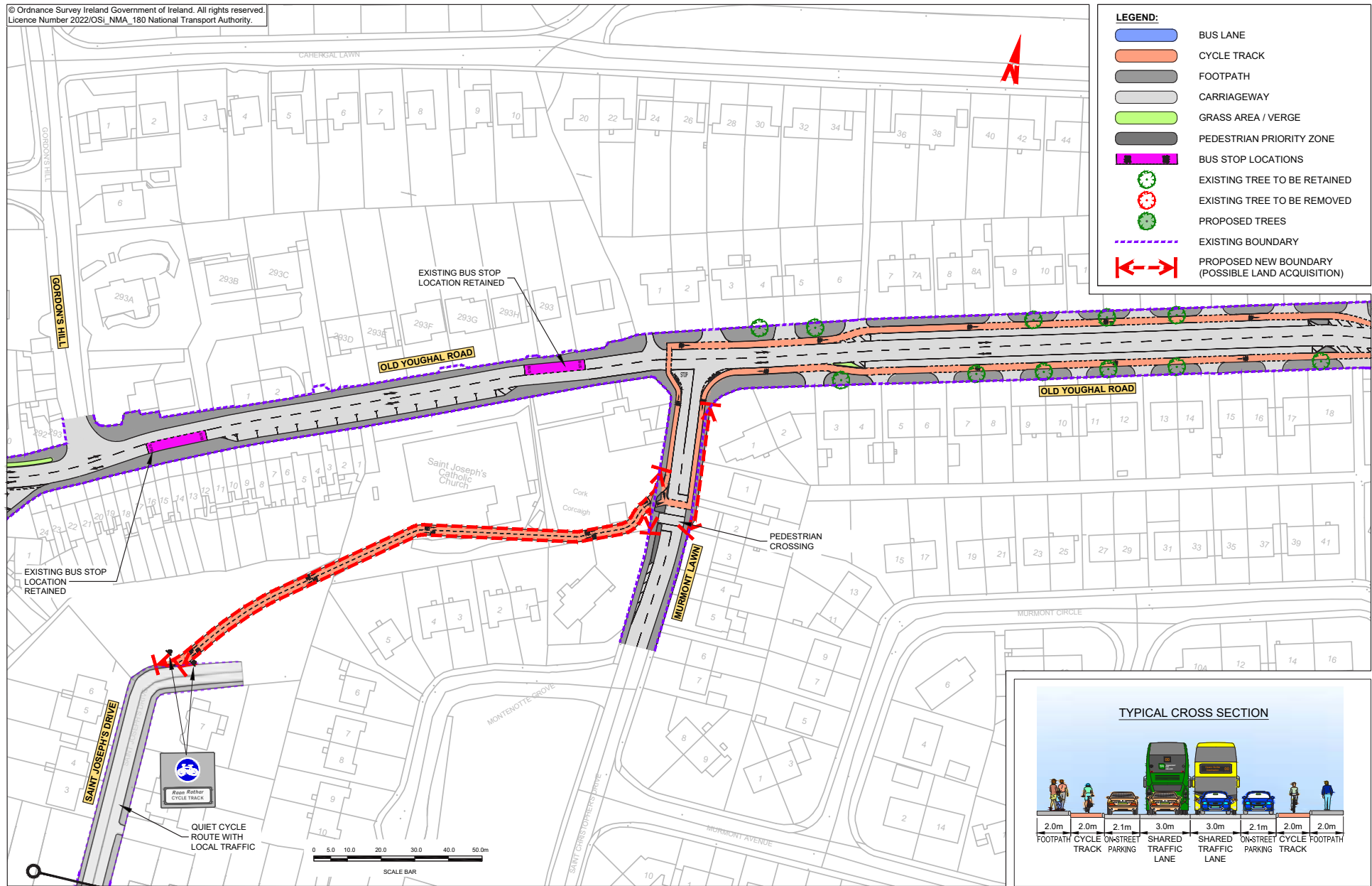
MAP 6: Emerging Preferred Route

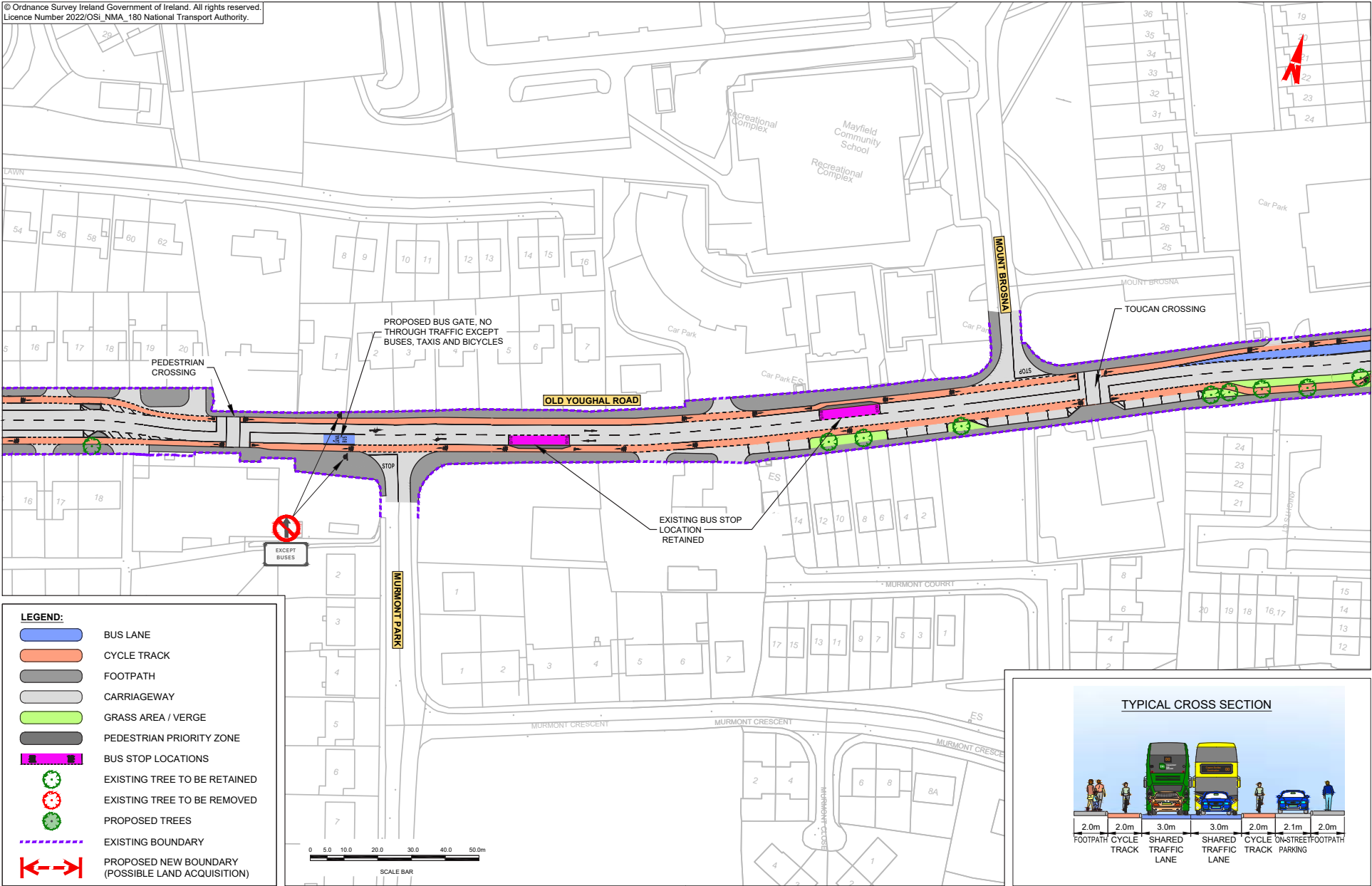


© Ordnance Survey Ireland Government of Ireland. All rights reserved.
Licence Number 2022/OSI_NMA_180 National Transport Authority.



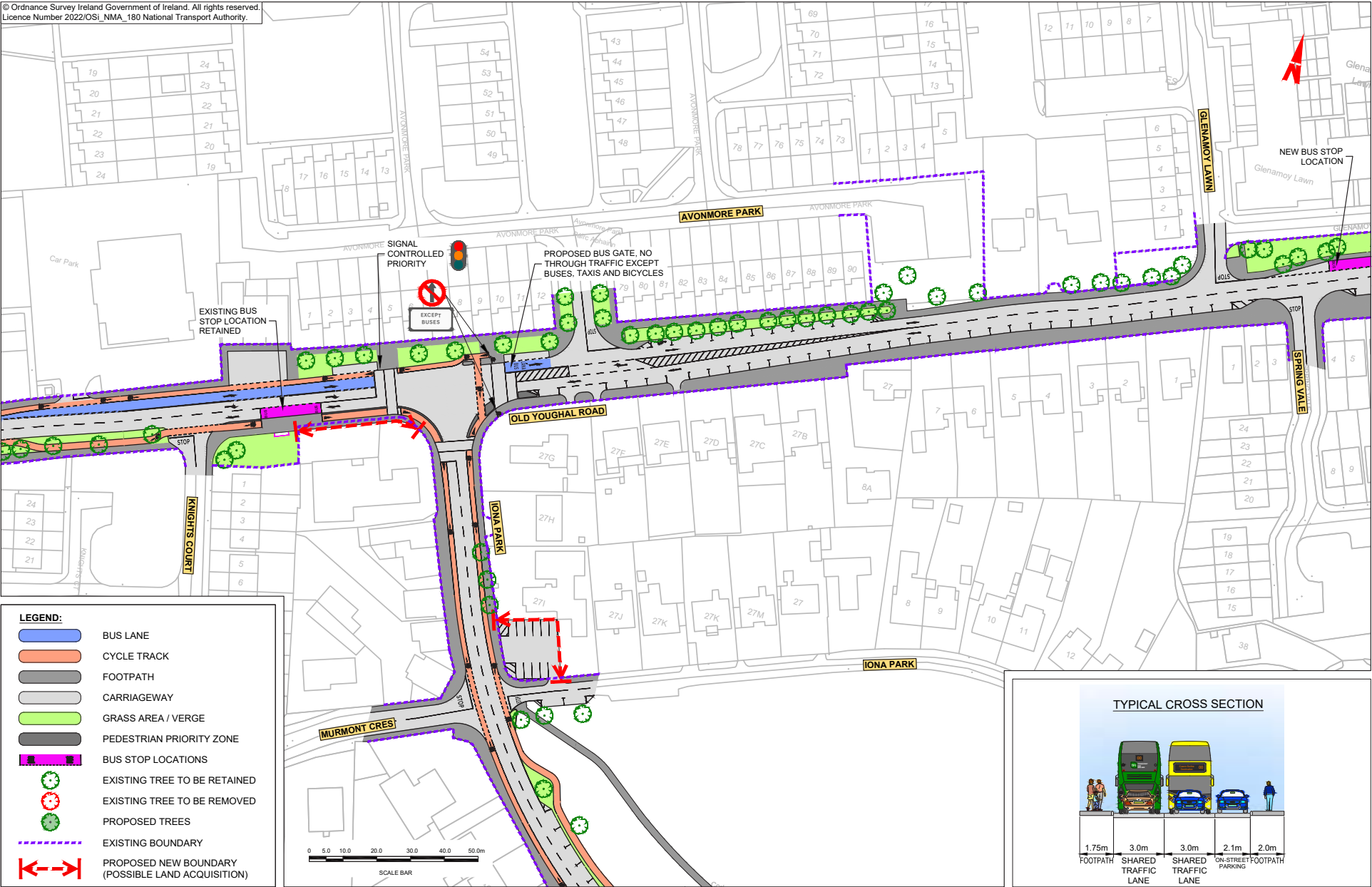
MAP 8: Emerging Preferred Route





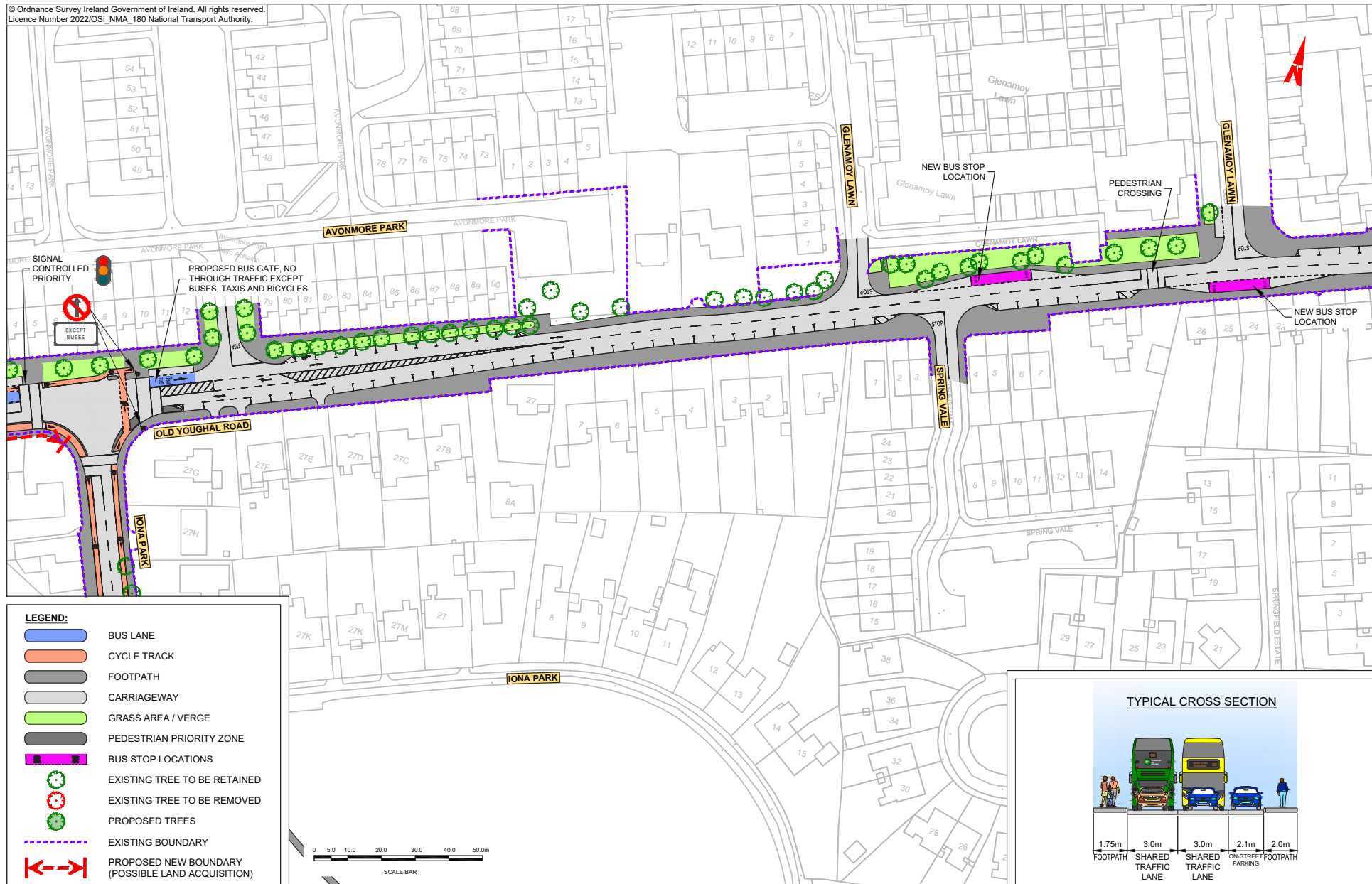
Indicative Layout - Old Youghal Road

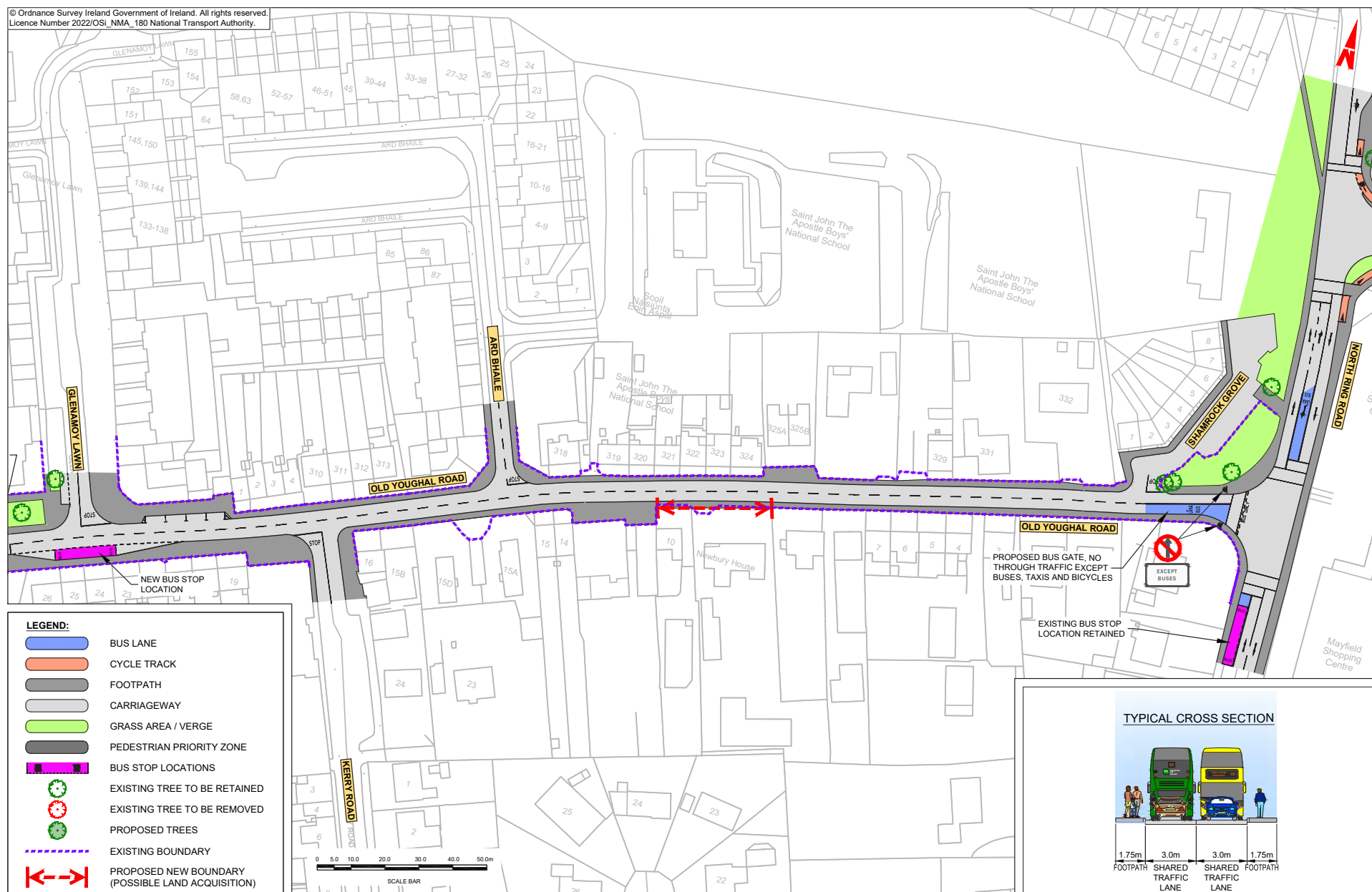




MAP 11: Emerging Preferred Route

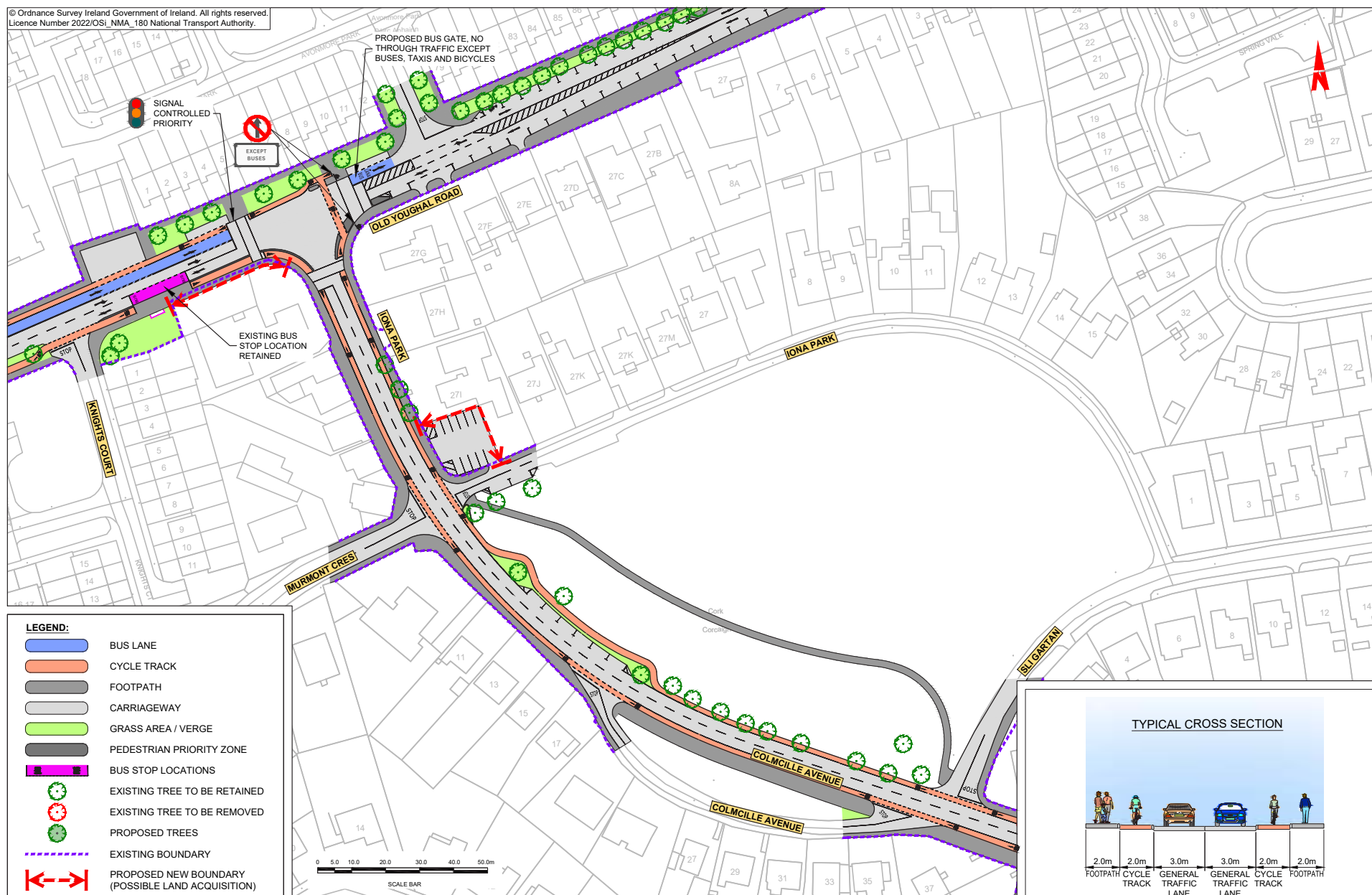
© Ordnance Survey Ireland Government of Ireland. All rights reserved.
Licence Number 2022/OSI_NMA_180 National Transport Authority.



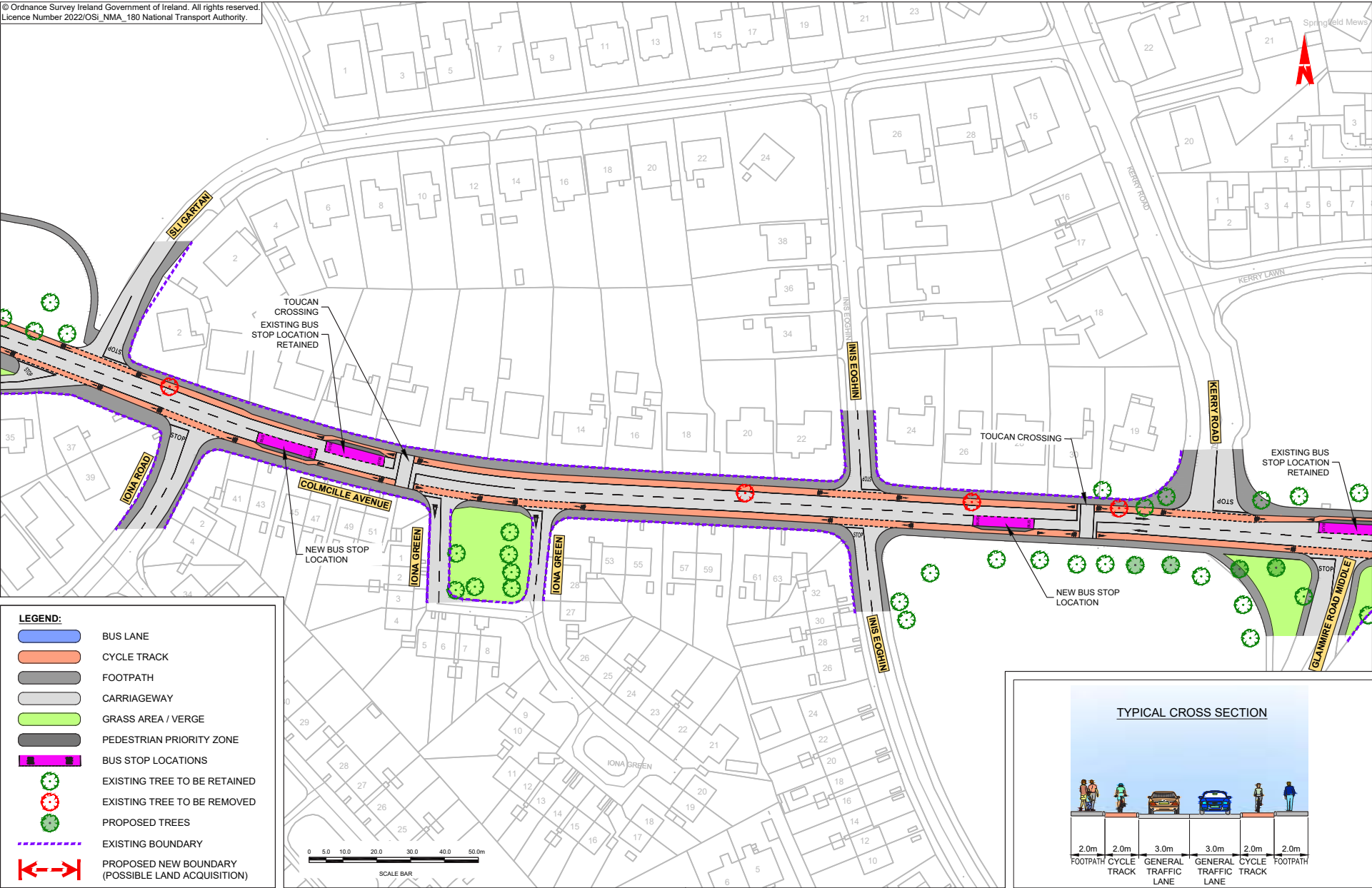


MAP 13: Emerging Preferred Route

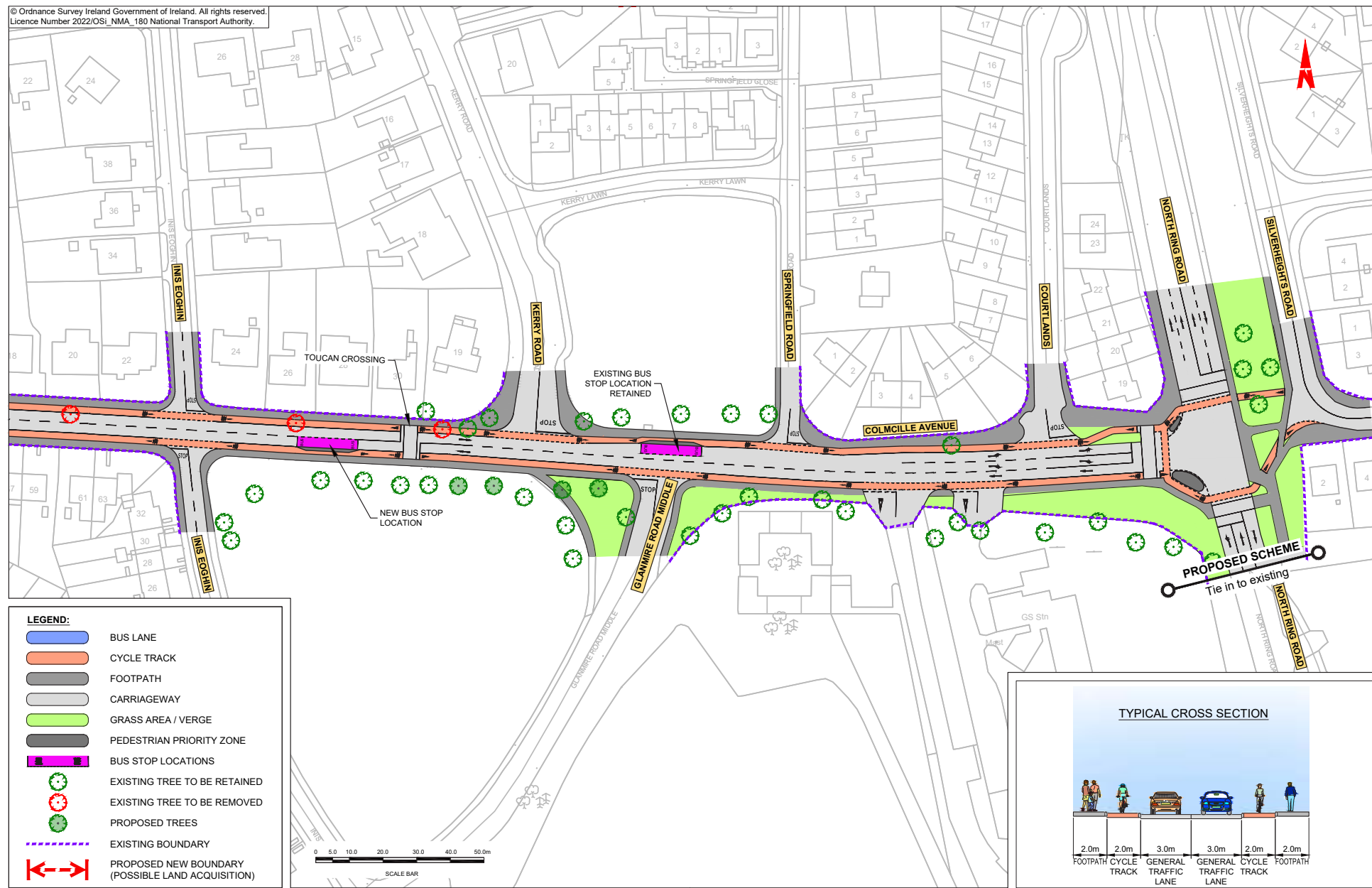
© Ordnance Survey Ireland Government of Ireland. All rights reserved.
Licence Number 2022/OSI_NMA_180 National Transport Authority.

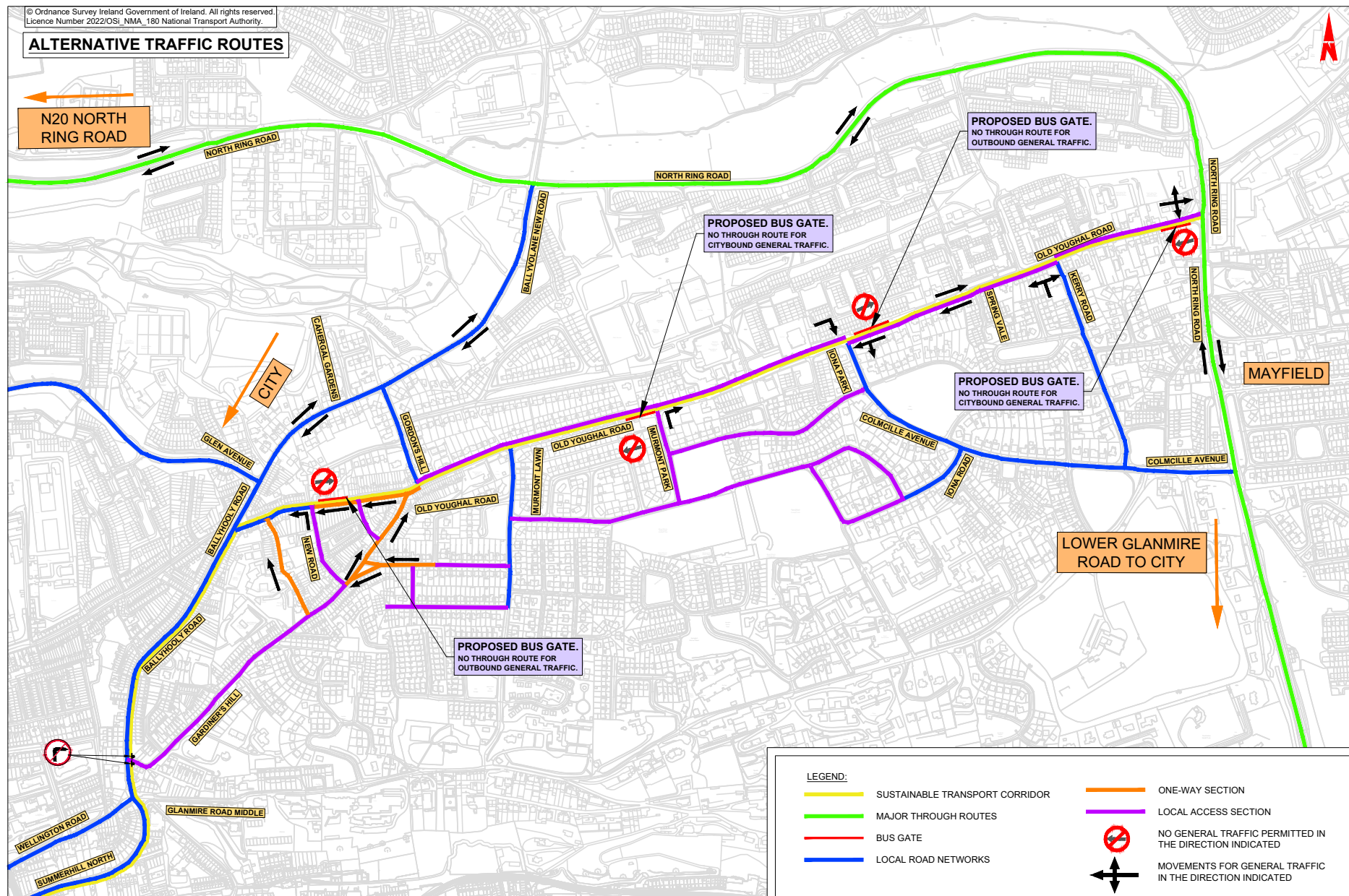


© Ordnance Survey Ireland Government of Ireland. All rights reserved.
Licence Number 2022/OSI_NMA_180 National Transport Authority.



MAP 15: Emerging Preferred Route









Údarás Náisiúnta Iompair
National Transport Authority

National Transport Authority
Harcourt Lane,
Dun Sceine,
Dublin 2.
D02 WT20



Rialtas
na hÉireann
Government
of Ireland

Tionscadal Éireann
Project Ireland
2040