

BUS CONNECTS WATERFORD

SUSTAINABLE TRANSPORT FOR A BETTER CITY.

Public Consultation on the
Draft New Bus Network
July 2024



Agenda

- **Welcome** - Gráinne Mackin, Director of Communications
- **Introduction to BusConnects** – Anne Graham, CEO, NTA
- **Draft New Bus Network** – Michelle Poyourow, JWA
- **Overview of the Consultation Process and How to Engage** – Michelle Poyourow, JWA
- **Q&A**



Anne Graham

National Transport Authority

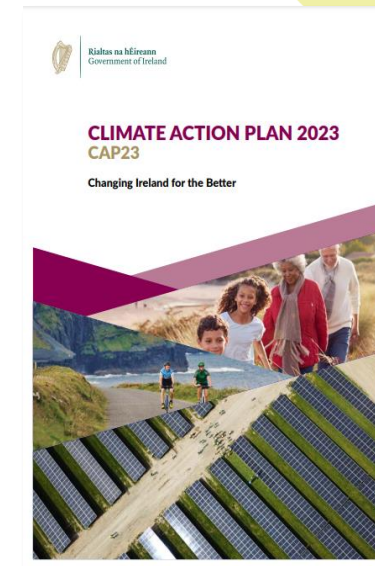
WMATS

- In 2022 the Waterford Metropolitan Area Transport Strategy was finalised and adopted.
- The Strategy was prepared by the NTA in collaboration with Waterford City & County Council, Kilkenny County Council and Transport Infrastructure Ireland, and sets out a framework for the development of transport infrastructure and transport services across the region over the coming two decades.
- Central to that strategy is the enhancement of public transport, with a particular emphasis on expanding and improving the overall bus system.
- BusConnects is the key programme to deliver that enhanced bus system



What is BusConnects?

- BusConnects is the NTA's programme to greatly improve bus services and cycling facilities in Irish cities.
- It is a key part of the Government's policy to improve public transport and address climate change in cities across Ireland.
- BusConnects is included in the following Government policy strategies:
 - The National Development Plan 2021 - 2030
 - The Climate Action Plan
 - National Sustainable Mobility Policy



What is BusConnects Waterford?



1 Building a network of new **Bus and Cycle Corridors**



2 Completely redesigning the bus network



3 New state-of-the-art ticketing system



4 Implementing **Cashless payment system**



5 Revamping the fare system



6 New bus livery



7 New bus stops and shelters with better signage and information



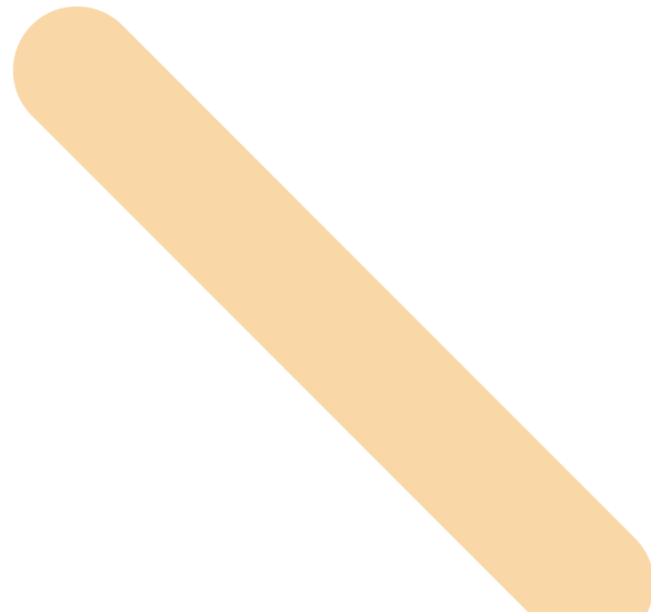
8 Transitioning to a zero emissions bus fleet





Michelle Poyourow

Jarrett Walker + Associates



A Collaborative Design Effort



Waterford BusConnects Focus Area



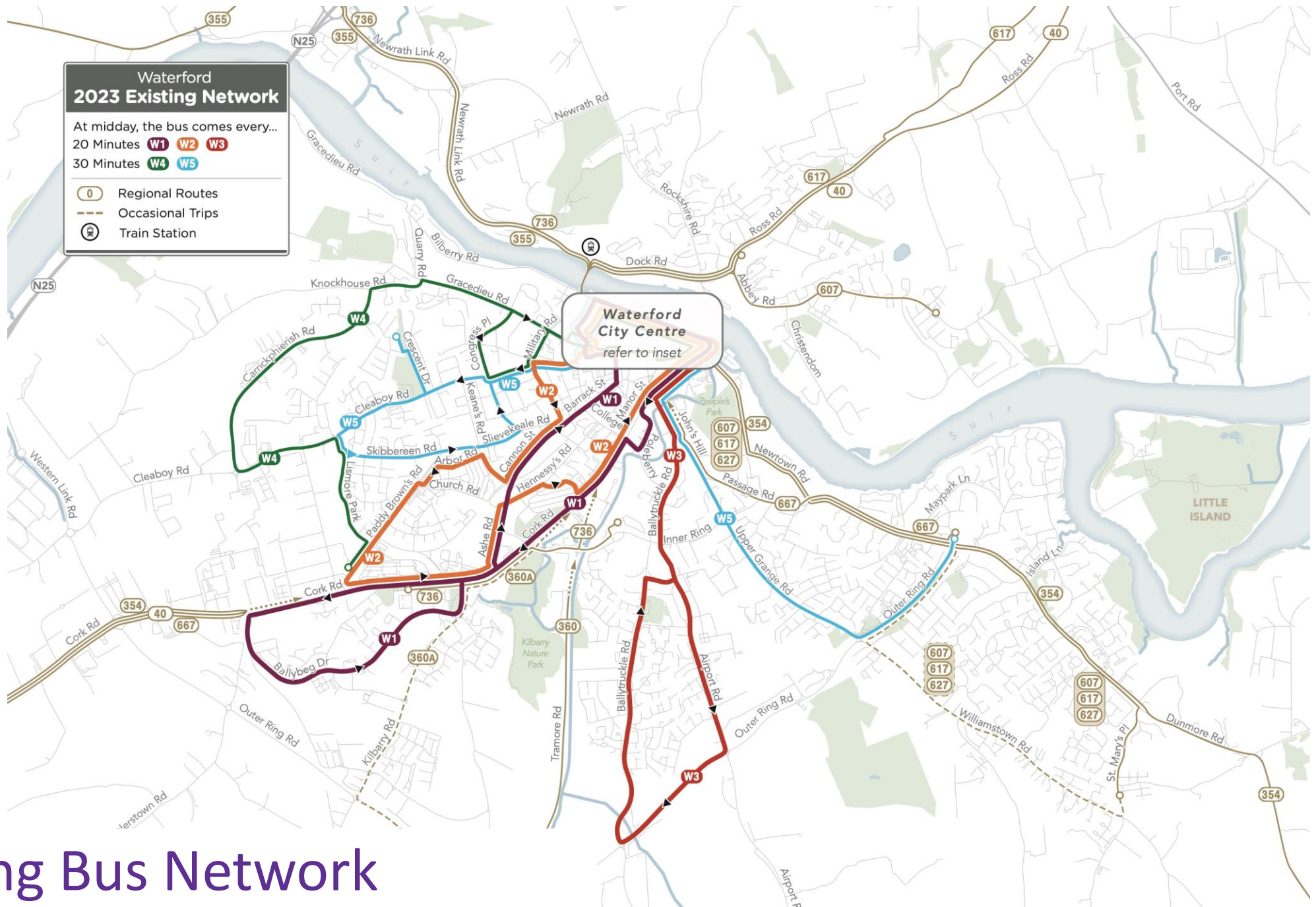
Areas in white are within the focus area for the bus network redesign



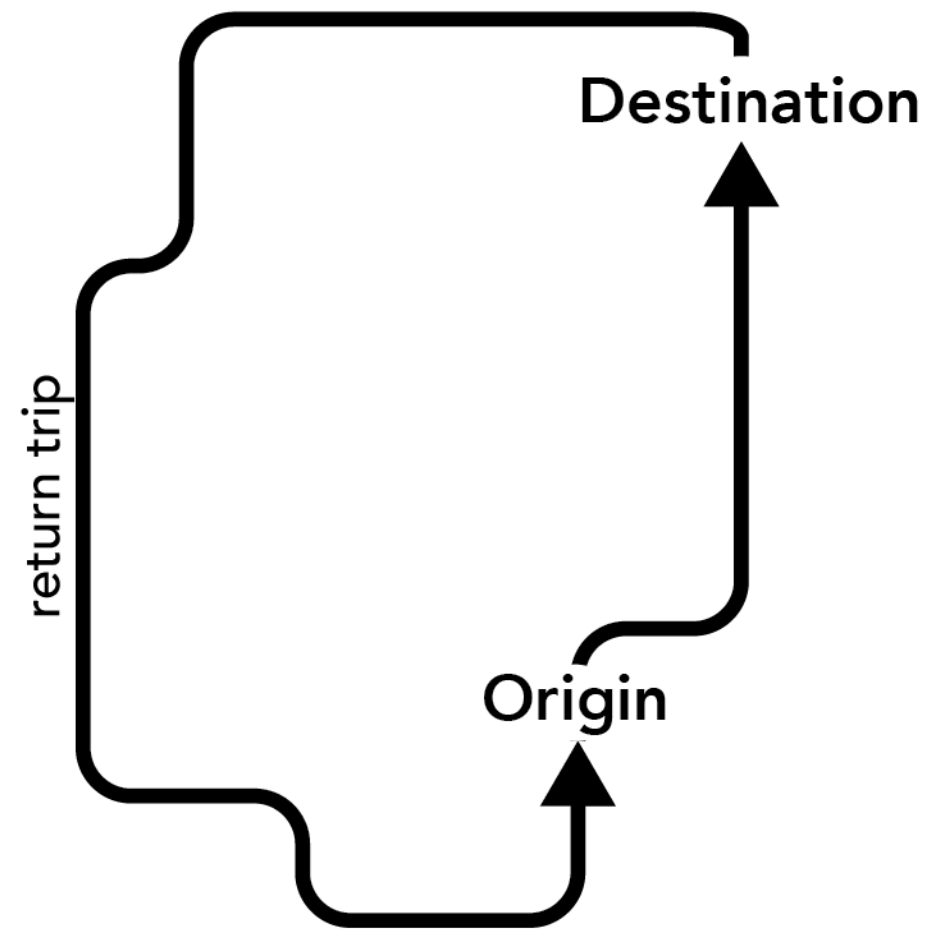
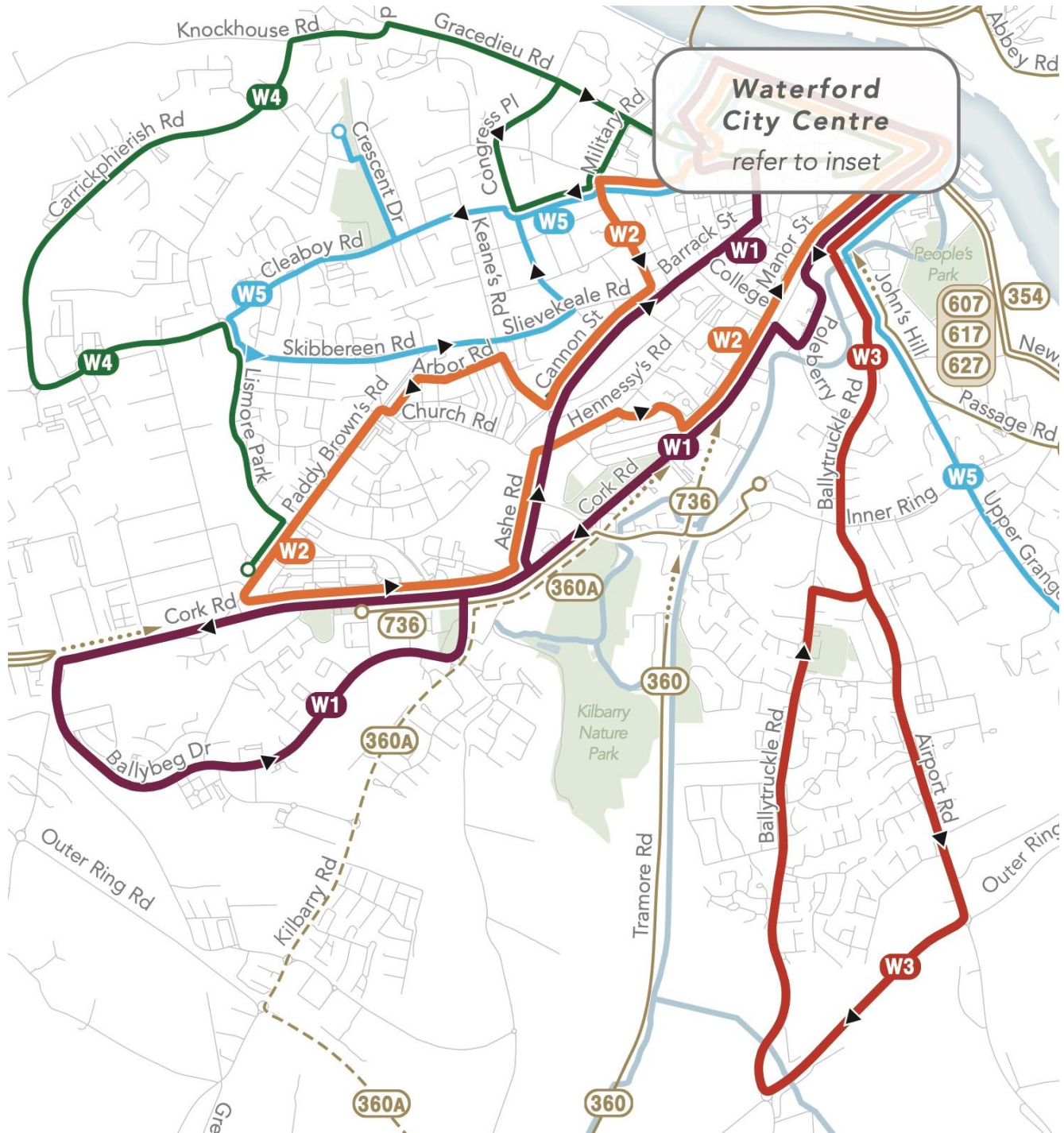
North



0.75 1.5 km

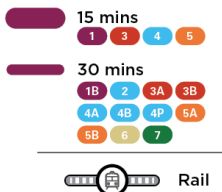


Existing Bus Network



Draft New Bus Network

Route Frequency at Midday on Weekdays

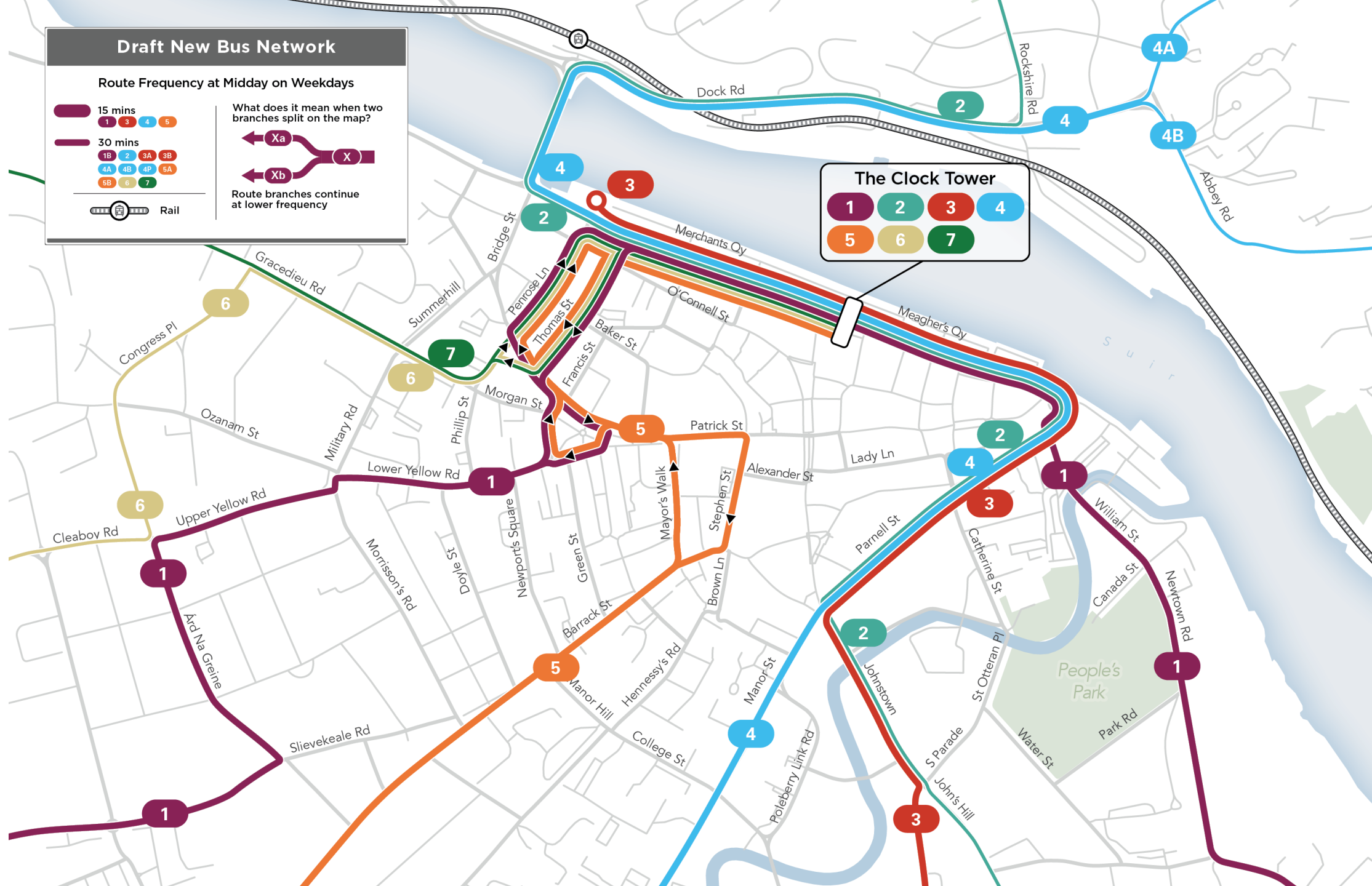


What does it mean when two branches split on the map?



Route branches continue at lower frequency

The Clock Tower

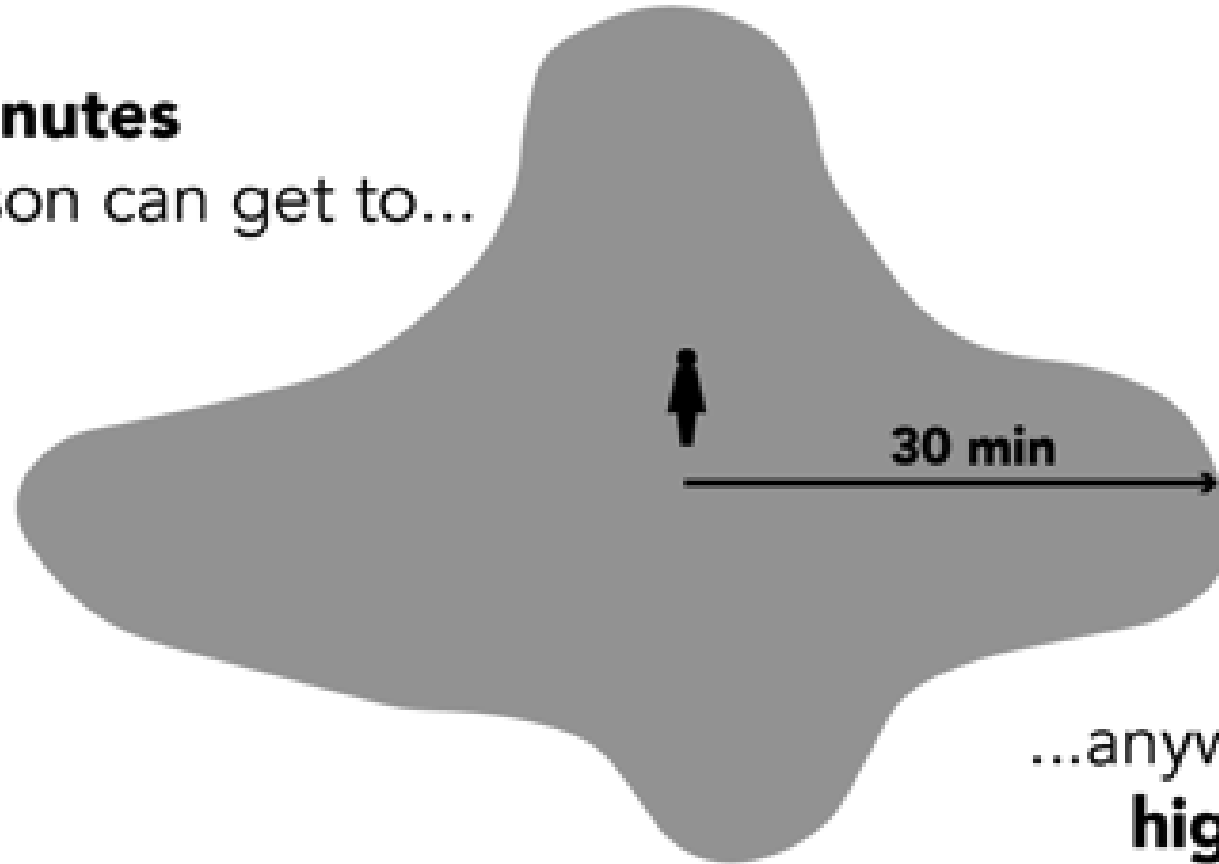


Access to Opportunity

Here is a person.

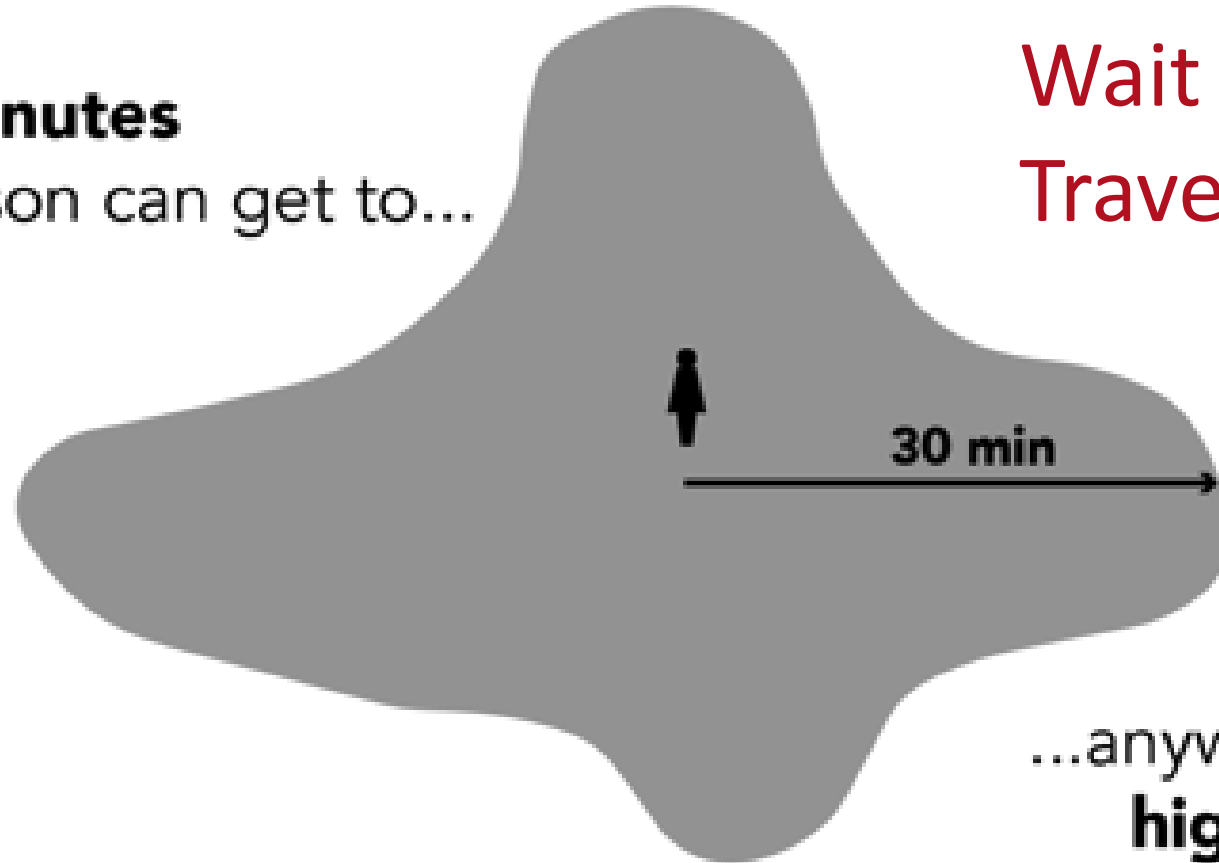


In **30 minutes**
this person can get to...

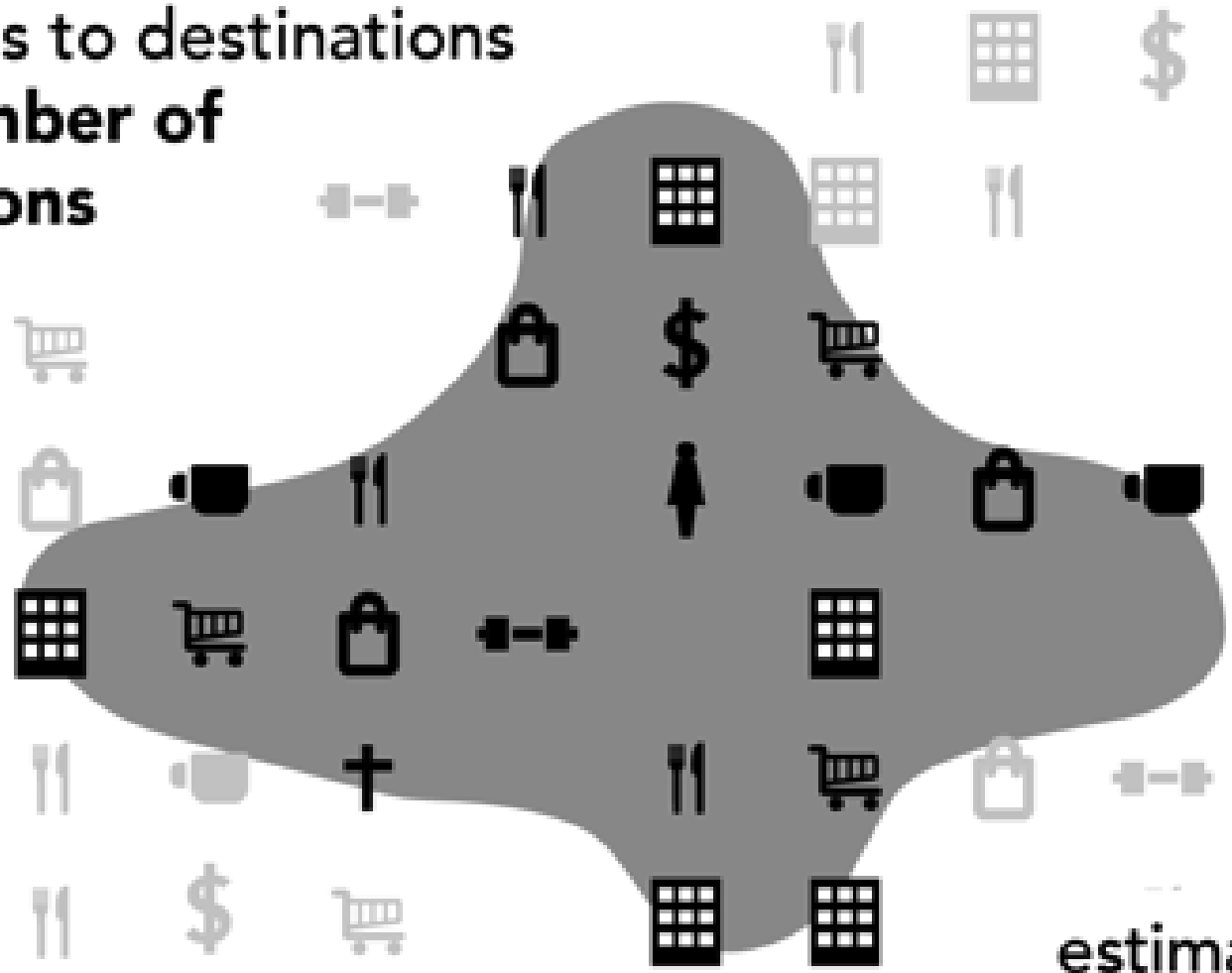


...anywhere in the
highlighted area.

In **30 minutes**
this person can get to...



Her access to destinations is the **number of destinations** in that area.



You can count the **jobs** or **schools** or **shopping** in that area to estimate her access.

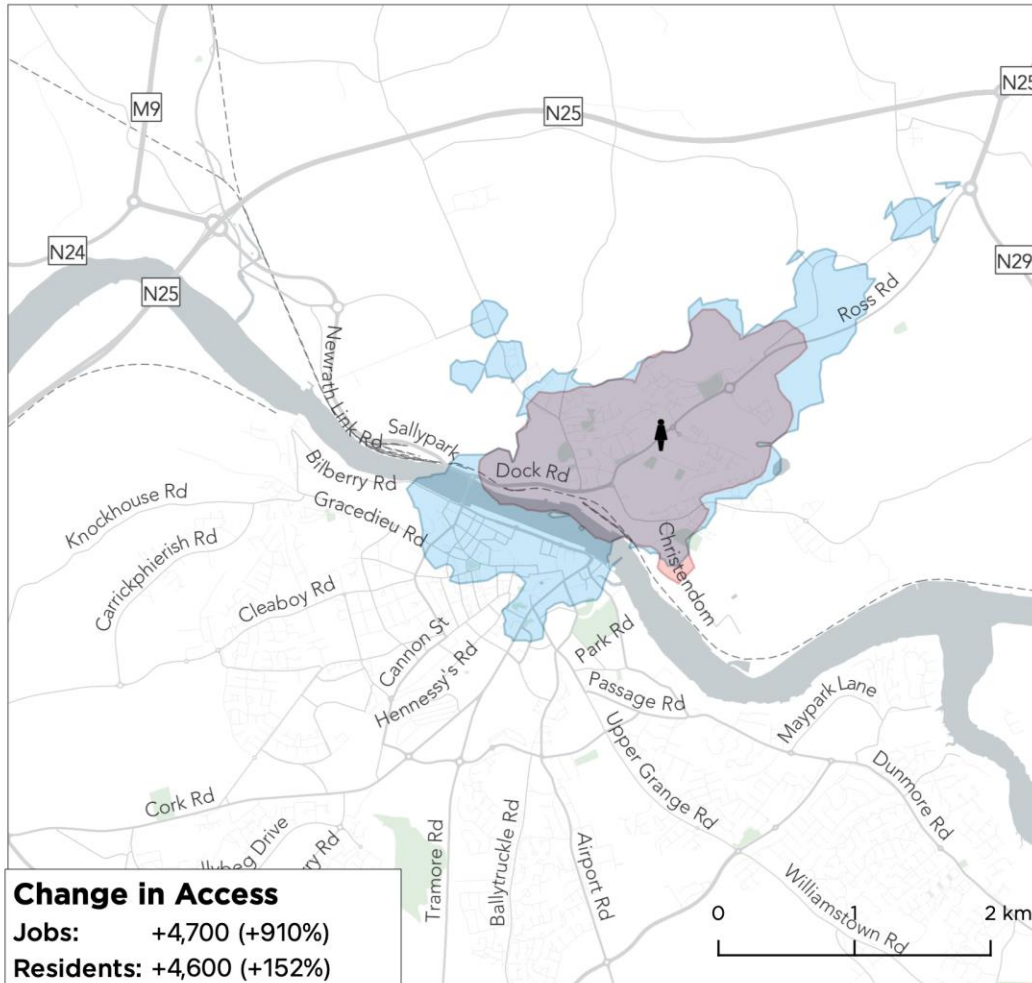
How far could I travel from
↑ IDA Business Park
in a reasonable amount of time?
Weekdays, in the Daytime



How far could I travel from
📍 Kilkenny Library, Ferrybank
 in a reasonable amount of time?
Weekdays, in the Daytime



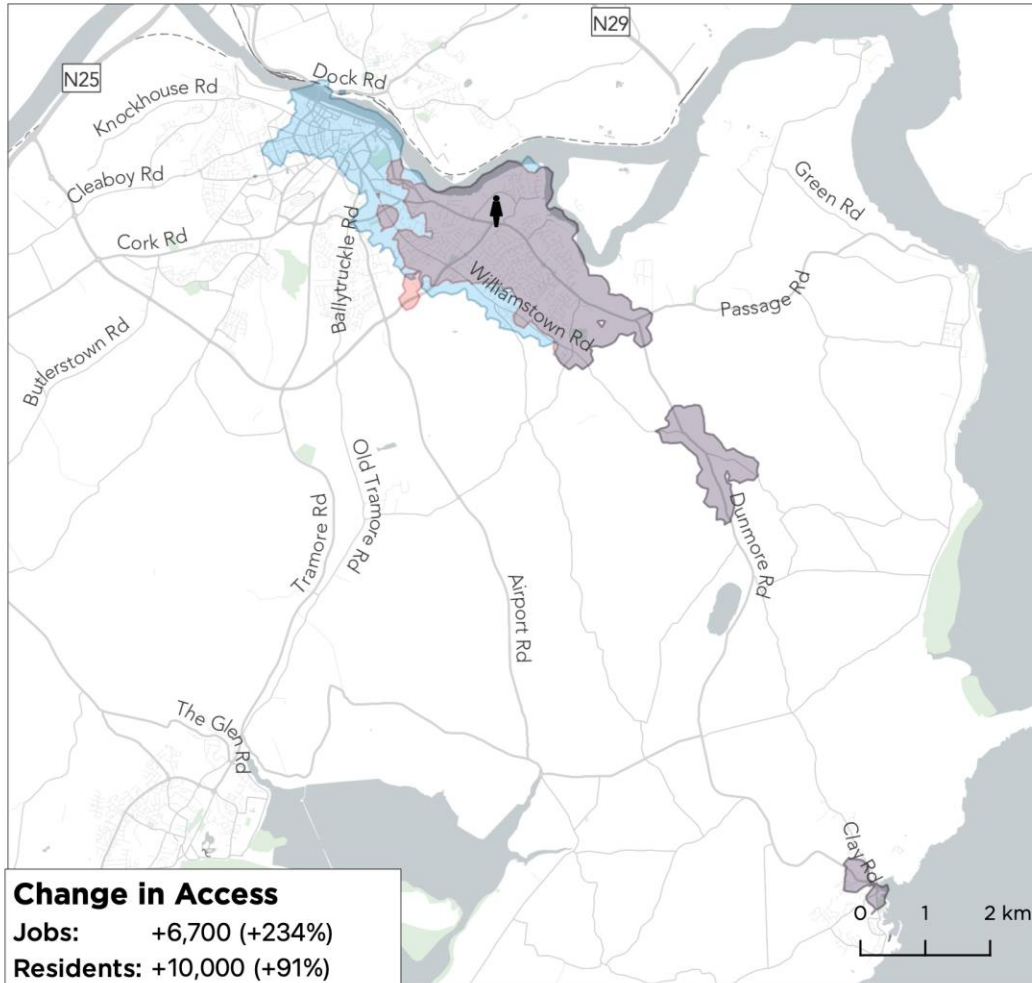
30 minutes



How far could I travel from
📍 **University Hospital Waterford**
in a reasonable amount of time?
Weekdays, in the Daytime



30 minutes



Better Access to Jobs and Education

- For the average resident, 47% more jobs within a 30 minute journey at rush hour on weekdays
 - And 36% more at other times of the weekday
 - And 67% more on Sundays
- For youths, 41% more jobs and 15% more educational opportunities within a 30 minute journey
- Big benefits at other times of the day and week; within 45 minute as well as 30 minute journeys; and for disadvantaged residents, unemployed residents and seniors.



How Would the Draft New Network Increase Access?

- Better frequencies, leading to shorter waits and easier interchange
- Many areas with only one-way service will have two-way routes
- Routes will be more direct
- Investment in Saturday and Sunday service
- New routes in areas such as Kilbarry, Skibbereen, Dunmore Road and Slieverue



How Will the Public Be Informed?

Public Consultation starts Monday 8th July and runs until 16th August 2024.

- **A public information campaign** will run for six weeks across various local and national media outlets; radio, newspapers, digital outdoor posters, on-board bus, social media.
- **Information booklets** will be delivered to over 40k premises over the coming weeks.
- All information, booklets and supporting documents will be on our website

www.busconnects.ie/cities/Waterford/



How Will the Public Be Informed?

- **Public Information Events** – Public information events will be held at the Tower Hotel on:
Thursday 18th July 2024 from 12pm-7pm;
Friday 19th July 2024 from 9am-2pm.
- **Public Information Webinar** – An online information webinar will be held on the 22nd July 2024 at 1:30pm, registration details on website.
- **Online Interactive Map** – Use the map to compare existing and proposed routes and see how access would change
www.busconnects.ie/cities/waterford/



Online Interactive Map

BUS CONNECTS WATERFORD Waterford Draft New Network Online Map

Search for a location or address

Choose Network to View: Existing Network Draft New Network

How far can I get in... 30 mins 45 mins ?

Area Reachable Using Public Transport and/or Walking

- Newly Reachable
- Still Reachable
- Not Reachable

Hide Options View Routes Destination Access How To Use More Information

Jobs reachable within 30 minutes: **+1,600 More**

Jobs reachable within 45 minutes: **+3,100 More**

© Mapbox © OpenStreetMap Improve this map



How to take part in the Public Consultation and engage?

Online Feedback Form

- The consultation portal can be found on our website at www.busconnects.ie/cities/Waterford/
- Submissions are welcomed through the interactive survey there.

Feedback forms can be posted –

Waterford Draft New Bus Network, National Transport Authority,
Dun Scéine, Harcourt Lane, Dublin 2, D02 WT20

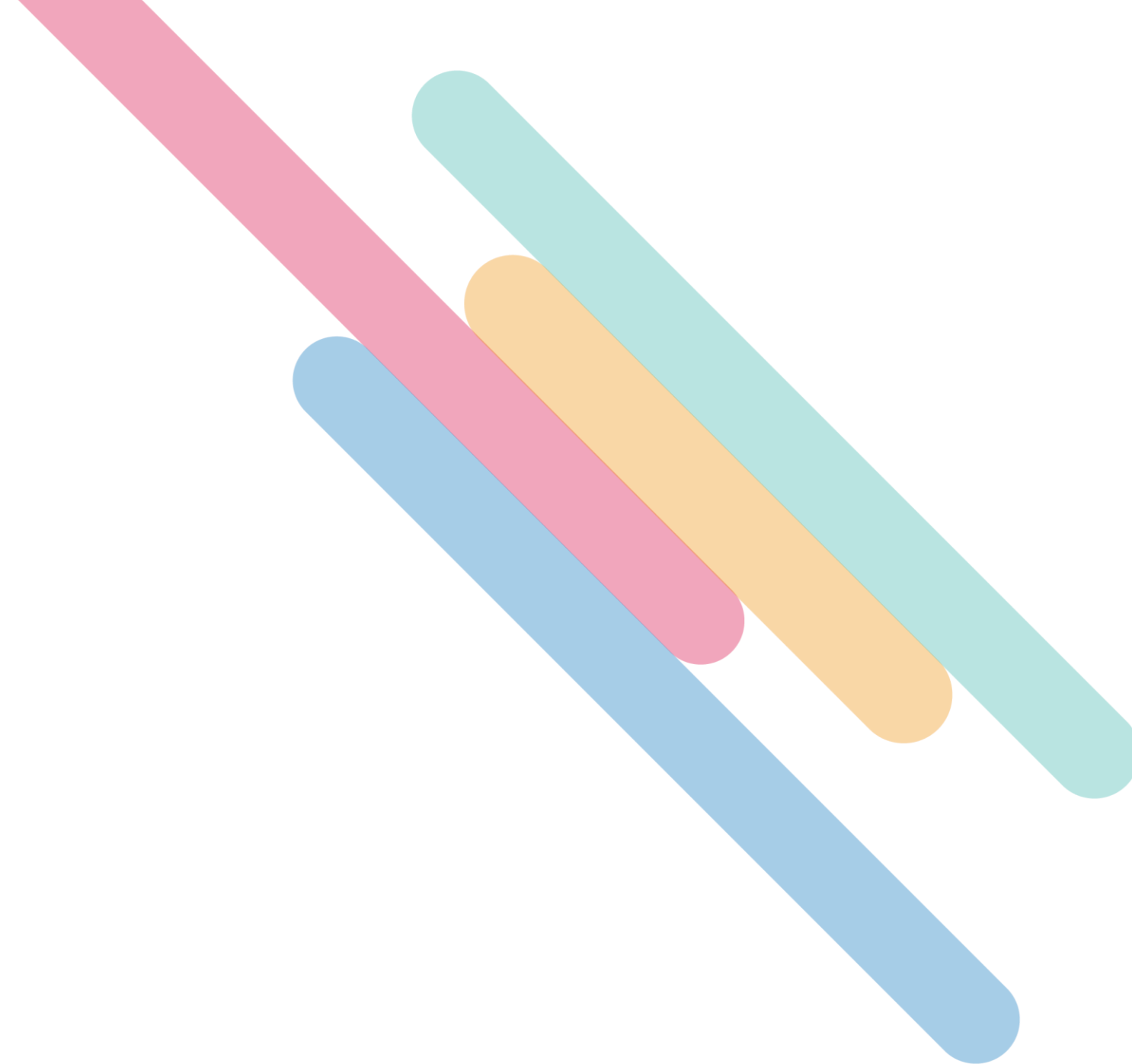
If people require additional information not available in the booklets or on the website contact

Email – waterfordnetwork@busconnects.ie

Freephone – 1800 303 653



Q & A



Thank you for attending.



